

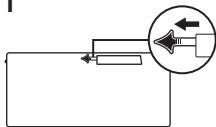


## G613

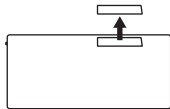
Wireless Mechanical Gaming Keyboard

Clavier gaming mécanique sans fil

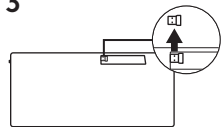
1



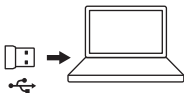
2



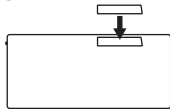
3



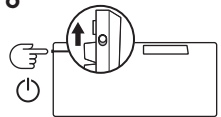
4



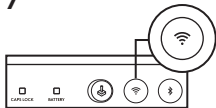
5



6

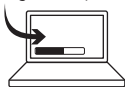


7

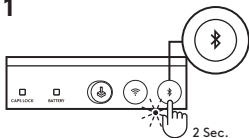


8

[www.logitech.com/downloads](http://www.logitech.com/downloads)



1



2 Sec.

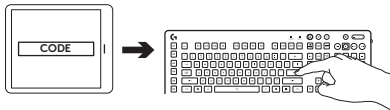
2



3



4

**EU Directive 2014/53/EU:**

Y-R0062-Bluetooth (2400 - 2483.5 MHz): 2402 - 2480 MHz; 7.72 dBm

Y-R0062-Proprietary 2.4 GHz (2400 - 2483.5 MHz): 2402 - 2481 MHz; 7.59 dBm

C-U0008-Proprietary 2.4GHz (2400 - 2483.5 MHz): 2402 - 2481 MHz; -0.21 dBm

[www.logitech.com/support/g613](http://www.logitech.com/support/g613)

© 2017 Logitech. Logitech, Logi and other Logitech marks are owned by Logitech and may be registered. The Bluetooth® word mark and logos are registered trademarks owned by the Bluetooth SIG, Inc. and any use of such marks is under license. All other trademarks are the property of their respective owners.

© 2017 Logitech. Logitech, Logi et les autres marques Logitech sont la propriété de Logitech et sont susceptibles d'être déposées. La marque et les logos Bluetooth® sont des marques déposées détenues par Bluetooth SIG, Inc. et sont utilisés sous licence. Toutes les autres marques sont la propriété de leurs détenteurs respectifs.

620-007709.004