

## Productive performance with optional expandability

Your business relies on high-speed, high-volume printing for greater productivity and efficiency. The HP LaserJet P3005 printer series is the ideal solution for small and medium-sized offices. With its ease-of-use, low total cost of ownership and robust performance, this reliable and worry-free printer allows you to rest easy and concentrate on your business.

### Efficiency through faster prints

- Print at up to 35 ppm (letter) and 33 ppm (A4)<sup>1</sup>
- Don't wait around—first page out as fast as 9.5 seconds<sup>1</sup> from PowerSave mode, with Instant-on Technology<sup>1</sup>

### Effective for complex jobs

- 400 MHz processor
- Up to 80 MB standard memory, expandable to 320 MB
- Easily handle large files with complex charts, tables and diagrams

### Productivity enhanced by connectivity

- Provide connectivity for entire workteam with HP Jetdirect Fast Ethernet embedded print server<sup>2</sup>, supporting a broad set of operating systems and fully upgradeable
- Open EIO slot allows expanded network or storage options
- Hi-Speed USB 2.0 port provides data speed of up to 480 mbps to one computer
- IEEE 1284-B compliant parallel port for easy networking<sup>4</sup>
- Support both IPv4 and IPv6 internet protocol

### Save time with fewer interruptions<None>

- Minimise user intervention with large capacity HP toner cartridges
- Large 500 sheets paper capacity reduces the need to reload frequently
- Maximum input capacity of up to 1100 sheets<sup>3</sup> with optional 500-sheet tray
- Eliminate paper jams with an output sensor that detects when the bin is full

### Professional results with flexible paper handling

- Include a 100-sheet multipurpose tray
- Support envelope to legal paper sizes
- Handle a broad spectrum of paper types, and now include A6-driver support using the multipurpose tray

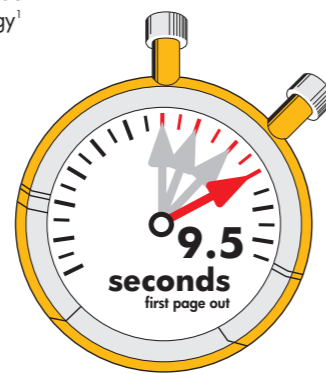
### Industry leader



100 million HP LaserJets shipped

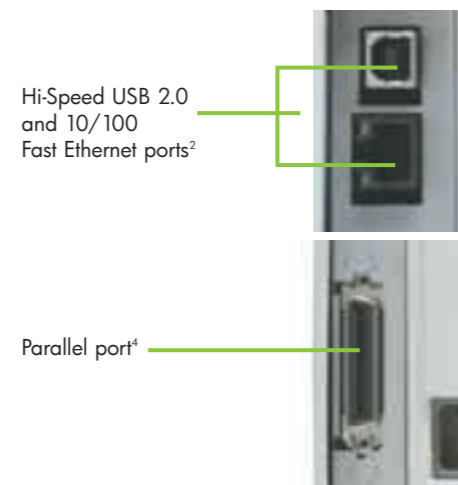
### Instant-on Technology

- Eliminates warm-up time
- First page out as fast as 9.5 seconds<sup>1</sup> from PowerSave mode
- Instant-on Technology<sup>1</sup>



Less waiting time for prints with Instant-on Technology<sup>1</sup>

### Connectivity



Hi-Speed USB 2.0, parallel and 10/100 Fast ethernet ports are available

### Technical specifications

<b>What's in the box</b>	<b>LJ P3005</b> —HP LaserJet P3005 Printer
	<b>LJ P3005d</b> —HP LaserJet P3005d Printer (includes built-in automatic two-sided printing)
	<b>LJ P3005n</b> —HP LaserJet 3005n Printer (includes HP Jetdirect Fast Ethernet embedded print server)
	<b>LJ P3005dn</b> —HP LaserJet P3005dn Printer (includes built-in automatic two-sided printing and HP Jetdirect Fast Ethernet embedded print server)
	<b>LJ P3005x</b> —HP LaserJet 3005x Printer (includes built-in automatic two-sided printing and HP Jetdirect Fast Ethernet embedded print server), 500-sheet input tray (tray 3)
	<b>LJ P3005/d/n/dn/x</b> —power cord, control panel overlay <sup>8</sup> , print cartridge, software and documentation on CD, Getting Started Guide, support flyer

<b>Environmental ranges</b>	
Operating temperature	15 to 32.5 °C (59 to 89 °F)
Storage temperature	-20 to 40 °C (-4 to 104 °F)
Relative humidity	Recommended: 30 to 70 %; Non-operating: 10 to 90 %

<b>Acoustics<sup>7</sup></b>	
Sound	<b>Power:</b> Active: 6.5 B(A); Ready: inaudible; <b>Pressure (bystander):</b> Active: 51 dB(A); Ready: inaudible

<b>Power specifications</b>	
Input requirements	100 to 127 VAC (± 10 %), 50/60 Hz (± 2 Hz), 220 to 240 VAC (± 10 %), 50/60 Hz (± 2 Hz)
Consumption <sup>10</sup>	Active: 600 watts; Ready: 9 watts; Sleep: 9 watts; Off: less than 0.2 watts, Energy Star <sup>®</sup> compliant, Typical Electricity Consumption (TEC): 2.642 kWh/Week

<b>Certifications</b>	
Safety	IEC 60950 (International), EN 60950 (EU), IEC 60825-1+A1+A2, UL/cUL Listed (US/Canada), GS License (Europe), EN 60825-1+A1+A2 Class 1, 21 CFR Ch. 1/SubCh. J (Class 1 Laser/LED Device) GB4943-2001, Low Voltage Directive 73/23/EEC with CE Marking (Europe)

<b>EMC</b>	CISPR 22: 1993+A1+A2/EN 55022: 1994+A1+A2 Class B, EN 61000-3-2: 2000, EN 61000-3-3: 1995+A1, EN 55024: 1998+A1+A2, FCC Title 47 CFR, Part 15 Class B (US), ICES-003, Issue 4 (Canada), GB9254-1998, GB17625. 1-2003, EMC Directive 89/336/EEC with CE Marking (EU)
------------	---

<b>Warranty</b>	One-year minimum warranty, varies by country
-----------------	--

<b>HP SureSupply enabled</b>	To learn more, please visit <a href="http://www.hp.com/go/SureSupply">www.hp.com/go/SureSupply</a>
------------------------------	--

<sup>7</sup> Duty cycle is defined as the maximum number of pages per month of imaged output. This value provides a comparison of product robustness in relation to other HP LaserJet or HP Color LaserJet devices, and enables appropriate deployment of printers and MFPs to satisfy the demands of connected individuals or groups.  
<sup>8</sup> Included only when needed to change the language on the control panel for a country/region.  
<sup>9</sup> Declared per ISO 9296 and 7729; values are subject to change. Configuration tested: base model printing at 35 ppm.  
<sup>10</sup> Values subject to change. Power numbers are the highest values measured using all standard voltages.  
<sup>11</sup> Declared yield value in accordance with ISO/IEC 19752.

• P denotes monochromatic single-function laser printer.



Energy Star is a U.S. registered mark of the United States Environmental Protection Agency. Microsoft, Windows, and Windows XP are U.S. registered trademarks of Microsoft Corporation. HP and the invent signature are trademarks of the Hewlett-Packard Company.

© 2006 Hewlett-Packard Development Company, L.P. The information contained herein is subject to change without notice and is provided "as is" without warranty of any kind. The warranties for HP products are set forth in the express limited warranty statements accompanying such products. Nothing herein should be construed as constituting an additional warranty. HP shall not be liable for technical or editorial errors or omissions contained herein. Intel and Pentium are U.S. registered trademarks of Intel Corporation. Microsoft and Windows are U.S. registered trademarks of Microsoft Corporation.

Printed in Singapore, 2001-9015-EEP, November 2006 (Rev. 1)

### Ordering information

<b>Product</b>	HP LaserJet P3005 Printer HP LaserJet P3005d Printer HP LaserJet P3005n Printer HP LaserJet P3005dn Printer HP LaserJet P3005x Printer
<b>Paper handling</b>	500-sheet input tray 3
<b>HP Smart printing supplies</b>	HP LaserJet print cartridge (6500 page cartridge) <sup>11</sup> HP LaserJet print cartridge (13,000 page cartridge) <sup>11</sup>
<b>Memory</b>	32 MB 144-pin DDR2 DIMM 64 MB 144-pin DDR2 DIMM 128 MB 144-pin DDR2 DIMM 256 MB 144-pin DDR2 DIMM
<b>Cables</b>	HP IEEE 1284-compliant bidirectional parallel cable, 2 meter HP IEEE 1284-compliant bidirectional parallel cable, 3 meter USB A to B cable, 2 meter
<b>Connectivity</b>	HP Jetdirect 635n IPv6/IPv4 internal print server (EIO) HP Jetdirect 625n Gigabit Ethernet internal print server HP Jetdirect 620n Fast Ethernet internal print server HP Jetdirect es-3700 Fast Ethernet external print server (USB 2.0) HP high-performance serial ATA EIO hard disk
<b>Service and support</b>	3-year, next-day exchange 3-year, next-day return-to-depot 3-year, next-business-day onsite response 2-year or 1-time replacement 3-year, pickup and return Installation service: 1 printer, 1 incident Installation service: 1 network configuration 1-year, post warranty service, next-day exchange 1-year, post warranty service, return-to-depot 1-time replacement 1-year, post warranty service, next-business-day onsite response 1-year, post warranty service, phone & online assistance
<b>Papers</b>	Asia Pacific: <a href="http://www.hp.com/apac/printingsupplies">www.hp.com/apac/printingsupplies</a> Asia: 65-6253-8500
<b>Solutions</b>	Third-part solutions <a href="http://www.hp.com/go/gsc">www.hp.com/go/gsc</a>

For more information, call your local HP resellers worldwide.

Australia 13 23 47;  
China 800 820 2255;  
Hong Kong 800 938 833;  
India 3030 4499;  
Indonesia 0800 1111 222;  
Korea 080 703 0700;  
Malaysia 1800 88 4848;  
New Zealand 0800 733 547;  
Philippines 1800 1441 6688;  
Singapore 1800 278 8100;  
Taiwan 0800 236 686;  
Thailand +66 2 353 9000;  
Vietnam +848 823 6215

For the following countries, please fax your queries to: +65 6275 6707  
 • Bangladesh • Bhutan • Brunei • Cambodia  
 • Maldives • Nepal • Pakistan • Sri Lanka



## HP LaserJet P3005 printer series

Robust, reliable and fast printing solution for small and medium workteams



# Professional prints, enhanced ease of use and worry-free maintenance

## Impressive documents that make you look good

- Great-looking output, for internal documents or customer presentations
- Advanced printing technology and HP toner deliver true 1200 dpi quality
- Crisp black text, clear details and fine lines for great results
- Take advantage of 3rd-party solutions to create professional documents, with two host USB software expansion slots

## Hassle-free maintenance with pro-active management

- Intuitive, two-line control panel with a built-in help function
- HP Easy Printer Care allows anyone to view printer status and manage approximately 15 printers
- For larger printer environments, HP Web JetAdmin enables remote installation, configuration and management over a network, through a simple Web interface
- Both software tools are available for download, absolutely free
- HP Smart printing technology<sup>5</sup> is integrated into every cartridge and printer
- Printer and cartridge work together to optimise quality and reliability, and send alerts when supplies are low

## Consistent, quality results whatever the speed

- HP toner formula is engineered for quality, consistency and speed
- Printer's transfer and fusing processes are optimised for high performance HP toner
- With up to 70% of the printer imaging system found in the cartridge, be sure to buy Original HP print cartridges

## Peace of mind inspired by HP support

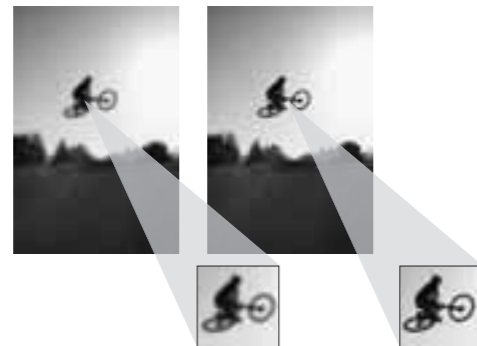
- HP LaserJet reliability is unparalleled, with 100 million LaserJet printers shipped worldwide
- Award-winning customer service and support backs every printer warranty (warranty varies by country)
- Fast online support
- HP Care Pack service allow warranty to be extended and enhanced

**Duty cycle**  
**100,000 pages/mth**



Robust monthly duty cycle for high volume printing

## Superior print quality



Sharper image with true 1200 dpi

Advanced HP technologies for sharper image

## HP toner cartridge



70% of printer imaging system

Use original HP supplies to get the results you need

## HP legendary reliability



August, 2006  
Hewlett-Packard Company

Reader's Choice for 15 years running<sup>6</sup>

# HP LaserJet P3005 printer series

## HP LaserJet P3005x Printer shown

- 1 Intuitive, two-line control panel with a built-in help function
- 2 250-sheet top output bin with long paper extension
- 3 One-door access to the easy-to-install print cartridge
- 4 100-sheet multipurpose tray enables automatic and manual feeding of special papers
- 5 Two 500-sheet input trays for a 1100-sheet input capacity
- 6 100-sheet rear output bin provides a straight through paper path for special papers
- 7 Hi-Speed USB 2.0 port for simple, direct connectivity
- 8 HP Jetdirect Fast Ethernet embedded print server (RJ-45 network port)
- 9 80 MB DDR memory expandable to 320 MB, and a powerful 400 MHz processor
- 10 One EIO slot
- 11 On/off switch
- 12 Automatic two-sided printing



## Series at a glance

Model	HP LaserJet P3005 (Q7812A)	HP LaserJet P3005d (Q7813A)	HP LaserJet P3005n (Q7814A)	HP LaserJet P3005dn (Q7815A)	HP LaserJet P3005x (Q7816A)
Print speed of up to	35 ppm (letter) and 33 ppm (A4)	35 ppm (letter) and 33 ppm (A4)	35 ppm (letter) and 33 ppm (A4)	35 ppm (letter) and 33 ppm (A4)	35 ppm (letter) and 33 ppm (A4)
RAM	48 MB, expandable to 320 MB	64 MB, expandable to 320 MB	80 MB, expandable to 320 MB	80 MB, expandable to 320 MB	80 MB, expandable to 320 MB
Processor	400 MHz	400 MHz	400 MHz	400 MHz	400 MHz
Input	100-sheet multipurpose tray	100-sheet multipurpose tray	100-sheet multipurpose tray	100-sheet multipurpose tray	100-sheet multipurpose tray, 500-sheet input tray
Output	100-sheet rear output bin	100-sheet rear output bin	100-sheet rear output bin	100-sheet rear output bin	100-sheet rear output bin, 250-sheet output bin
Connectivity	Hi-Speed USB 2.0 port	Hi-Speed USB 2.0 port	Hi-Speed USB 2.0 port	Hi-Speed USB 2.0 port, HP Jetdirect Fast Ethernet embedded print server	Hi-Speed USB 2.0 port, HP Jetdirect Fast Ethernet embedded print server
Two-sided printing	Manual (driver support provided)	Manual (driver support provided)	Manual (driver support provided)	Manual (driver support provided)	Automatic

## Technical specifications

Model	HP LaserJet P3005 (Q7812A)	HP LaserJet P3005d (Q7813A)	HP LaserJet P3005n (Q7814A)	HP LaserJet P3005dn (Q7815A)	HP LaserJet P3005x (Q7816A)
Print and copy speed <sup>1</sup>	Up to 35 ppm (letter), 33 ppm (A4)				
First page out	As fast as 9.5 seconds				
Resolution	Up to 1200 x 1200 dpi; HP FastRes 1200				
Processor	400 MHz				
Memory	<b>LJ P3005</b> —48 MB standard <b>LJ P3005d</b> —64 MB standard <b>LJ P3005n/dn/x</b> —80 MB standard; expandable to 320 MB through one industry-standard 144-pin DIMM slot; Memory Enhancement technology (MET)				
Durability ratings	Recommended monthly page volume: 1500 to 5000 pages per month; duty cycle <sup>2</sup> : up to 100,000 pages per month for peak printing needs				
Printer language	HP PCL6, HP PCL5e, HP postscript level 3 emulation				
Typeface included	PCL: 103 internal font set (plus Greek, Hebrew, Cyrillic, Arabic); PS: 93 internal font set (plus Greek, Hebrew, Cyrillic, Arabic)				
Paper handling	Input <b>LJ P3005/d/n/dn</b> —100-sheet multipurpose tray 1, 500-sheet input tray 2 <b>LJ P3005x</b> —100-sheet multipurpose tray 1, 500-sheet input trays 2 and 3				
Output	250-sheet output bin; up to 10 envelopes, 75 transparencies; 100-sheet rear output bin				
Two-sided printing	<b>LJ P3005/n</b> —Manual (driver support provided) <b>LJ P3005d/dn/x</b> —Automatic				
Sizes	Multipurpose tray 1: 76 x 127 to 216 x 356 mm (3 x 5 to 8.5 x 14 inches); letter, legal, executive, A4, A5, B5 (JIS), envelopes; trays 2 and 3: letter, legal, executive, 8.5 x 13 inches, A4, A5, B5 (JIS); automatic two-sided printing: letter, legal, 8.5 x 13 inches, executive (JIS), A4				
Weights	Tray 1, straight through paper path for special media and heavier stock: 60 to 200 g/m <sup>2</sup> (16 to 53 lb); trays 2 and 3: 60 to 120 g/m <sup>2</sup> (16 to 32 lb); automatic two-sided printing: 60 to 120 g/m <sup>2</sup> (16 to 32 lb)				
Types	Paper (bond, colour, letterhead, plain, preprinted, pre-punched, recycled, rough), envelopes, labels, cardstock, transparencies, user-defined				
Connectivity	<b>LJ P3005/d</b> —IEEE 1284-B compliant parallel port, Hi-Speed USB 2.0 port, one open EIO slot <b>LJ P3005n/dn/x</b> —Hi-Speed USB 2.0 port, one open EIO slot HP Jetdirect Fast Ethernet embedded print server				
Interfaces	<b>LJ P3005/d</b> —IEEE 1284-B compliant parallel port, Hi-Speed USB 2.0 port, one open EIO slot <b>LJ P3005n/dn/x</b> —Hi-Speed USB 2.0 port, one open EIO slot HP Jetdirect Fast Ethernet embedded print server				
Client operating systems	Windows® 98 SE, 2000, Me, XP Home, XP Professional, Server 2003; Mac OS v 10.2.8, 10.3.9, 10.4.3				
Network operating systems	Via HP Jetdirect print servers: Windows® 2000, XP Home, XP Professional, XP Professional x64, Server 2003; Novell 5.1 and higher; Mac OS 9.x, OS X v 10.2 and higher; Red Hat Linux 7.x and higher; SuSE Linux 8.x and higher; HP-UX 10.20, 11.x, 11.i; Solaris 2.5 and higher (SPARC systems only); IBM AIX 3.2.5 and higher (requires software from the NOS vendor); MPE-iX; Citrix MetaFrame Server; Windows Terminal Services				
Dimensions (w x d x h)	<b>LJ P3005/d/n/dn</b> —425 x 410 x 309 mm (16.7 x 16.1 x 12.2 inches) <b>LJ P3005x</b> —425 x 410 x 474 mm (16.7 x 16.1 x 18.7 inches)				
Weight (without print cartridge)	<b>LJ P3005/d/n/dn</b> —16.2 kg (35.7 lb) <b>LJ P3005x</b> —21.3 kg (47 lb)				

<sup>1</sup> Exact speed varies depending on the system configuration, software application, and document complexity.  
<sup>2</sup> Networking capability is standard on the HP LaserJet P3005n, HP LaserJet P3005dn and HP LaserJet P3005x only.  
<sup>3</sup> All models include a 500-sheet input tray and 100-sheet multipurpose tray. The HP LaserJet P3005x includes an extra 500-sheet tray.  
<sup>4</sup> Available on HP LaserJet P3005 and P3005d only.  
<sup>5</sup> Using genuine HP supplies ensures availability of all HP printing features.  
<sup>6</sup> PC Magazine's 19th Annual Reader Satisfaction Survey August 21, 2006.