






The Professional Video SourceBook

Section 11

MIXERS/LIVE SWITCHERS

Analog Way.....	850-859
Barco.....	860-861
Datavideo	862-871
Edirol	872-877
Focus Enhancements	878-879
Grass Valley	880-881
Newtek.....	882-886
Panasonic.....	887-889
Sony.....	890-897

Obtaining information and ordering from B&H is quick and easy. When you call us, just punch in the corresponding Quick Dial number anytime during our welcome message. The Quick Dial code then directs you to the specific professional sales associates in our order department.

 For Section 11, Mixers/Live Switchers
use Quick Dial #: 821

NATI^X

8x2 Hi-Resolution Seamless Switcher

NatiX is an 8x2 high-resolution scaled native matrix with 8 universal inputs and different resolutions on each output. It performs ultra smooth and fast switching transitions with no artifacts (independently on the 2 outputs). The switching or transition can be performed with a fading effect, using a color, black, or one of the two images saved as a frame store. NatiX features logo insertion and frame store functions. It can switch any of the 8 inputs to 1 or 2 outputs. The scaled inputs can be displayed on output 1 and/or 2 with different resolutions.

- ◆ NatiX provides a high quality image thanks to its auto pixel clock, digital decoder, state of the art 3:2 and 2:2 pull down circuitry, auto-adaptative pixel by pixel 3D motion compensation, time base corrector and frame rate converter & follower. Each input image control can be individually set up and stored in non-volatile memory.
- ◆ Logo Insertion and Frame Store: Record 2 full screen images and up to 8 logos in 16 million colors using a non-volatile memory. Images and logo(s) can be flash captured from any video or computer source by keying or image cut-out. Up to 2 logos can be allocated per input and positioned anywhere on the screen. The frame store can be used as a welcome or transition image while switching between 2 sources.



- ◆ NatiX features 8 balanced stereo inputs and 2 balanced stereo (+ mono) outputs, and 1 auxiliary input mixed (not switched) with the 8 inputs with settable levels and master volume.
- ◆ Designed for A/V presentations, boardrooms and exhibition centers. It offers a user-friendly interface with front panel control, LCD display, and Windows compatible software. Has an ethernet port, and can also be controlled via RS-232, TCP IP or optional remote keypad.

NatiX (Mfr # NTX8022A • B&H # ANNTX8022A) **CALL**

NatiX with DVI and SD/HD-SDI input
(Mfr # NTX8022A-HD • B&H # ANNTX8022AHD) **CALL**

CENTRI^X

8x2 Computer & Video Up/Down Mixer Scaler Switcher

CentriX features numerous effects (cut, fade, PIP, title, mix) together with high resolution logo insertion and frame store functions. Fitted with 8 universal inputs, it can be used as an 8 x 2 scaled matrix as well as a mixer. When used as a high resolution matrix, CentriX allows switching of any of the 8 inputs to one of the 2 outputs. The inputs are scaled and can be displayed with different resolutions on output 1 and 2.

- ◆ CentriX scales all sources – video and computer – and performs mixing and seamless switching transitions between any 2 inputs. It also performs various effects (PIP, fade, title, mix, cut). The 2 Main outputs match the native resolution of any video-projector or hi-res. display devices, and the Preview outputs allow to monitor the sequences before they are displayed on the main screens, avoiding errors during a presentation.
- ◆ CentriX provides a high quality image thanks to its integrated digital decoder, improved 3:2 and 2:2 pull down circuitry, auto-adaptative pixel by pixel 3D motion compensation, Time Base Corrector, Frame Rate Converter & Follower. Each input image control can be individually set and stored in non-volatile memory.



- ◆ Frame store and logo(s) can be flash captured from any video or computer sources. Up to 2 logos can be allocated by input and positioned anywhere on the screen. The frame store can be used as a welcome or transition image while switching between 2 sources.
- ◆ It is specifically designed with a blank front panel for A/V presentation displays, conference/boardroom installations and exhibition centers. It offers a user-friendly interface and can be remotely controlled and upgraded via its RS232 or TCP/IP ports, or using the optional remote keypad. The result is dynamic, glitch-free and astonishing.

CentriX (Mfr # CTX8022 • B&H # ANCTX8022) **CALL**

CentriX with DVI and SD/HD-SDI input
(Mfr # CTX8022-HD • B&H # ANCTX8022HD) **CALL**

EVENTIX

8x2 Computer & Video Up/Down Mixer Scaler Switcher

EventiX is a computer and video Up/Down Mixer Scaler Switcher with numerous effects: cut, wipes, fade, PIP and title, together with high-resolution logo insertion and frame store functions. Fitted with 8 universal inputs, it can be used as a Mixer or as an 8x2 scaled Matrix. EventiX scales all sources—video and computer—and performs mixing and seamless switching transitions between any 2 inputs. The 2 Main outputs match the native resolution of any video-projector or high resolution display device, and the Preview outputs allow to monitor the sequences before they are displayed on the main screens to avoid errors during a presentation.



- ◆ Eventix switches any of the 8 inputs to 1 of the 2 or both outputs. Inputs are scaled and can be displayed with different resolutions on output 1 and 2.
- ◆ Logo Insertion and Frame Stores: Record 2 full screen images and 8 logos in 16 million colors in a non-volatile memory. Images and logo(s) can be flash captured from any video or computer source by keying or image cut-out. Up to 2 logos can be allocated per input and positioned anywhere on the screen. The frame store can be used as a welcome or transition image while switching between 2 sources.
- ◆ Eventix provides a high quality image thanks to its integrated digital decoder, improved 3:2 and 2:2 pull down circuitry, auto-adaptative pixel by pixel 3D motion compensation, time base corrector and frame rate converter & follower. Each input image control can be individually set and stored in non volatile memory.
- ◆ Eventix is designed with a full control front panel for high-resolution A/V presentation displays, large events, rentals and installations. It offers a user-friendly interface and can be easily controlled and upgraded via its RS-232, TCP-IP or optional remote keypad.

EventiX (Mfr # CTX8022 • B&H # ANCTX8022)CALL

EventiX with DVI and SD/HD-SDI input (Mfr # EVX8022-HD • B&H # ANEVX8022HD)CALL

DI-VENTIX

8x2 Computer & Video Up/Down Mixer Scaler Switcher with Edge Blending

In addition to effects such as fade, wipes, moving PIP and a true 8x2 scaled matrix, Di-VentiX features a stand alone Soft Edge function with a dual output. In Edge Blending mode, Di-VentiX can drive two video projectors for horizontal or vertical Soft Edge. Used as an 8 input switcher, Di-VentiX provides a double PIP image on a fixed background thanks to the 6 full frame images stored in its memory. The background image can be chosen among the 6 frames saved in the memory. The sources displayed in the PIPs can be switched. Di-VentiX can also be upgraded with Cross Blender for multiple projectors edge blending.



- ◆ Di-VentiX scales all sources and performs seamless switching transitions between any 2 inputs. The 2 Main outputs match the native resolution of any video-projector or Hi-Res. display device, and the Preview outputs allow to monitor the sequences before they are displayed on the main screens to avoid errors during a presentation.
 - ◆ Logo Insertion and Frame Stores: Record 6 full screen images and 8 logos in 16 million colors in a non-volatile memory. Images and logo(s) can be flash captured from any source by keying or image cut-out. Up to 2 logos per input and positioned anywhere on the screen.
 - ◆ Equipped with 2 SDI/HD-SDI and 1 DVI input and DVI and HD-SDI outputs, Di-VentiX is a full digital I/O signal processor providing enhanced image quality.
 - ◆ Features 3:2 and 2:2 pull down circuitry, auto-adaptative pixel by pixel 3D motion compensation, TBC and frame rate converter & follower.
 - ◆ Optional audio card features 8 balanced stereo inputs, 2 balanced stereo outputs (+ mono), 1 auxiliary input mixed (not switched) with the 8 inputs with settable levels and master volume.
- EventiX** Mfr # DVX8022 • B&H # ANDVX8022CALL

Di-VentiX, EventiX & CentriX EFFECTS

All effects can be performed from Computer to Computer sources, Video to Video sources, Computer to Video sources and Video to Computer sources. All effects with: 1 Di-VentiX (EventiX or CentriX) and 1 video-projector.

Logo Insertion

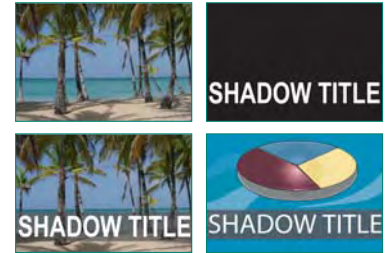
- ◆ Up to 2 logos can be displayed over Computer or Video sources
- ◆ iX Switchers record 6 full screen images* and 8 logos in 16 million colors in a non-volatile memory
- ◆ Images and logo(s) can be flash captured from any Video or Computer source by keying or image cut-out
- ◆ Logos can be positioned anywhere on the screen



*2 on EventiX and CentriX

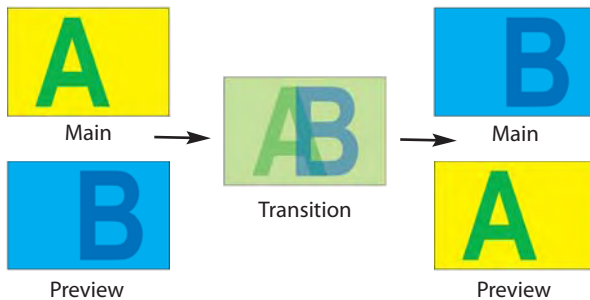
Title and Shadow Title

- ◆ The title remains on the screen while switching from Video to Computer sources and vice versa
- ◆ Title can be displayed over a Computer or a Video image
- ◆ The shadow title function, with adjustable vertical size and position as well as level of shadow, increases visibility on bright images



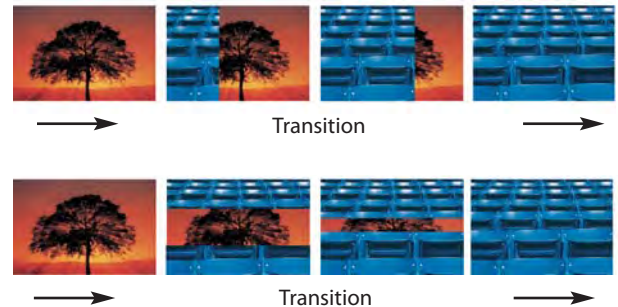
Fade

- ◆ Adjustable pre-timed fades or manual transition with T-Bar
- ◆ Fade between any input, Computer or Video with adjustable cross-fading duration



Horizontal and Vertical Wipes

- ◆ Numerous horizontal and vertical wipe transitions can be selected
- ◆ Horizontal: from left, right, center - or -
Vertical: from up, down, center



PIP Effect: High quality picture insertion from any input. The PIP can be sized and moved anywhere over the background image. Both background image and PIP can be fast & smoothly switched through a fade to black or customized color. Customizable borders are also available as well as different opening modes: cut, fade, sliding from one image edge.

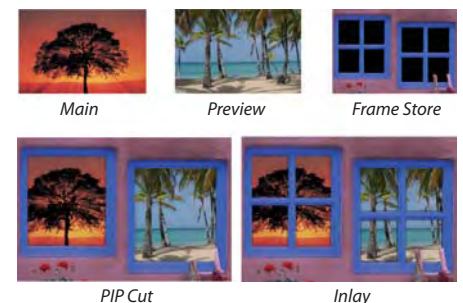
PIP with borders

- ◆ Size and style of the PIP border are adjustable
- ◆ The background or PIP image can be switched



Double PIP

- ◆ The images in Main and Preview (=2 PIPs) and the Frame Store are displayed on the Main output
- ◆ PIP images can be changed while in the Frame



SPECIFICATIONS

	NatiX	CentriX	EventiX	Di-Ventix
Operation Modes				
Embedded Soft Edge	-	-	-	✓
Mixer	-	✓	✓	✓
Matrix 8x2	✓	✓	✓	✓
Transition Effects				
Double PIP with Inlay Mode	-	✓	✓	✓
PIP (Moving and Borders)	-	✓	✓	✓
Cut - Cross Fade - Wipe - Slide	-	✓	✓	✓
Title Effect with adjustable shadow	-	✓	✓	✓
Inputs				
# of Inputs (total)	8	8	8	8
Composite (PAL - NTSC)	8 (Universal)	8 (Universal)	8 (Universal)	8 (Universal)
S.Video (Y-C)	8 (Universal)	8 (Universal)	8 (Universal)	8 (Universal)
Component (YUV)	8 (Universal)	8 (Universal)	8 (Universal)	8 (Universal)
RGsB & RGSB - 15 kHz	8 (Universal)	8 (Universal)	8 (Universal)	8 (Universal)
HDTV YUV, 1080i, 720p, 480p	8 (Universal)	8 (Universal)	8 (Universal)	8 (Universal)
Computer RGBHV - RGSB - RGSB	8 (Universal)	8 (Universal)	8 (Universal)	8 (Universal)
DVI	1 (optional)	1 (optional)	1 (optional)	1 (included in the 8 inputs)
SD/HD-SDI	1 (optional)	1 (optional)	1 (optional)	2 (included in the 8 inputs)
Up to 1600x1200 (UXGA) & 1920x1080 (HDTV)	✓	✓	✓	✓
Outputs				
DVI (Main + Preview) / HD-SDI (Main + Preview)	- / -	- / -	- / -	1+1 / 1+1
Computer RGBHV - RGSB - RGSB (Main + Preview)	2+2	2+2	2+2	2+2
SDI, YUV, Y/C, CV optional	✓	✓	✓	-
Up to 1920x1080 & 1600x1200	-	-	-	✓
HD-SDI: 1080i & 720p	-	-	-	✓
Up to 1400x1050	✓	✓	✓	✓
Internal 50/60/72(1)/75(1) Hz	✓	✓	✓	✓
Follow on any Input or FRC	✓	✓	✓	✓
Image Control				
Automatic Standard Detection (NTSC - PAL - SECAM)	✓	✓	✓	✓
Auto Centering (Auto Pixel/Phase)	✓	✓	✓	✓
Memory Presets (Input/Output)	✓	✓	✓	✓
Input Aspect Ratio (4/3 - 16/9 - WS Anamorphic)	✓	✓	✓	✓
Freeze	✓	✓	✓	✓
Image adjustments				
Brightness - Contrast - Color - Hue (NTSC)	✓	✓	✓	✓
Sharpness	✓	✓	✓	✓
Black Level	✓	✓	✓	✓
Horizontal Smooth	✓	✓	✓	✓
Frame and Logos and Other Features				
# of Full Frame Stored / # of Logos Stored	2 / 8	2 / 8	2 / 8	6 / 8
Test Patterns / Remote Control (RS232) / LAN	✓ / ✓ / ✓	✓ / ✓ / ✓	✓ / ✓ / ✓	✓ / ✓ / ✓

EASY CUT • EASY FADE

High Resolution Video Seamless Switcher/Scalers with Audio

Easy Cut and Easy Fade combine the functions of a high-resolution video scaler with an audio video switcher. They are a state-of-the-art scaler/line multiplier /quadrupler/doubler which significantly increases video image resolution and brightness. Three computer inputs are provided for direct display of your presentations or web applications. They also allow audio stereo switching. Otherwise the same, Easy Fade adds cross fading, cut and titling.



- ◆ They are equipped with 4 video inputs (two composite, one S-Video and one RGB or YUV component). They output an analog RGB HV computer format on an HD15 connector.
- ◆ They offer seamless or smooth switching. In seamless mode, the computer output format is identical to one of the three computer inputs, the one selected as the reference. It is possible to switch with a seamless cut between this PC and any video source.
- ◆ Frame memory can be used as a “welcome” or an “alert” message. This frame can be acquired from any video input or it can be downloaded from a computer via RS-232.
- ◆ They feature a high quality decoder that includes an advanced comb filter, an emphasized “natural” color processing, a highly robust sync. detection and a new enhanced 3D (pixel by pixel basis) auto-adaptive de-interlacing scheme (for motion artifacts). With automatic correction of the “film to video” transfer (3/2 & 2/2 pull down), they provide a superb image.
- ◆ Adjustable image parameters such as brightness, contrast, color, aspect ratio and sharpness. These parameters are stored for each video input. A preset command enables to go back to factory settings.
- ◆ They offer automatic or manual stand-by mode, activated on the front panel or via RS-232 control. A second com port is available to automatically Start/Stop a distant display device according to their stand by status.
- ◆ They accept a B&W composite signal or industrial, security, camera applications, etc.
- ◆ Input source aspect ratio 4:3 or 16:9 widescreen, can be selected as well as the size of the screen (4:3/16:9).
- ◆ Frame conversion and time base correction make them a great solution for professional A/V applications.

QUATTRO • QUATTRO D

High Resolution Computer and Video Scalers and Seamless Switchers

Quattro is equipped with four universal A/V inputs (NTSC and PAL composite and S-Video, YUV, RGB, HDTV and computer) and one analog output. The Quattro D offers four universal A/V inputs including one DVI, and two outputs (one analog and one DVI). They perform ultra fast and smooth transition between any video or computer source, offering a clean cut between any input. The Quattro D also allows true seamless switching between one computer input (direct) and any other video or computer input. Ultra compact and user friendly, the Quattro and Quattro D are designed for high resolution A/V presentation displays, houses of worship, conference and boardrooms, and events.



- ◆ Ready to fit the native resolution of the latest HD display devices, Quattro and Quattro provide superior image thanks to high quality digital decoder, improved 3:2 and 2:2 pull down circuitry, auto-adaptative pixel by pixel 3D motion compensation, time base corrector, frame rate converter & follower.
- ◆ Each input image control - brightness, contrast, color, hue, processing, aspect ratio, zoom, etc..., can be individually set and stored in non volatile memories.
- ◆ Each of the 4 inputs is fitted with a stereo audio line. The audio can either follow or break away from the video image.
- ◆ Easy to use, they offer an Auto Setup function and a powerful Auto Clock & Phase for computers.
- ◆ LCD screen and control buttons for menu: Test patterns, proc. image adjustment, input format selection, output format display, output format and sync, audio input level and output, volume adjustments, position and size adjustments, front panel control lockout.
- ◆ They are fitted with a dual RS-232 port for integral remote control and automatic control of other devices in the installation. Field upgradable firmware maintains the high value of your equipment. An optional TCP/IP connection allows for remote control and/or upgrade.

QUATTRO FX

High Resolution Digital and Analog, Computer & Video Scaler and Seamless Switcher

Stepping up from the Quattro D, the Quattro FX adds fade and titling, high-resolution logo insertion and frame stores. The Quattro FX can store in memory eight still and one animated logos and four full frame images in true high-resolution 16 million colors. Recording is done either by direct acquisition from input source or from computer download of image files. Up to 2 logos can be assigned to each input to be displayed at any position on the output screen. Logos can have any shape due to the keying capability, and transparency is user adjustable. Full frames can be used as PIP background and welcome or transition images.



- ◆ Quattro FX can mix a computer source with a title with any video or computer source. The title remains on screen during the transition.
- ◆ Cross-fade effects between computer and video (TV/HDTV) or computer sources, with adjustment of the cross-fading duration. Shadow title effect with settable vertical size and position enhances the readability of the titling text over very bright images.

- ◆ Can store one high-resolution 24-bit color animated logo in memory. Recording is done either by direct acquisition from input source or from computer download of image files. The logo can be displayed anywhere on the output screen and can have any shape due to the keying capability. Transparency is user adjustable.

QUATTRO VUE

High Resolution Digital and Analog, Computer & Video Scaler and Seamless Switcher

Quattro Vue is equipped with four universal A/V inputs including one DVI, and 3 outputs: one analog, one DVI for the Main and one analog for the Preview. It performs an ultra fast and smooth transition between any video or computer sources. It also allows true seamless switching between one computer Input (direct) and any other video or computer input. In addition, it offers a true scaled preview and effects including high resolution PIP for computer and video formats.



- ◆ True scaled Preview output offers the facility to visualize any source before displaying it on the Main output. Preview out ensures safe presentations since any video or computer source can be checked on a simple LCD screen before being shown to the audience.
- ◆ Image control over each input—brightness, contrast, color, hue, processing, aspect ratio, zoom, etc. can be set and stored in memory.
- ◆ Auto Setup function; Auto Clock & Phase

- ◆ Creates high quality picture insertion from any input. The PIP can be smoothly sized and moved anywhere over the background image. The PIP source can be quickly and smoothly switched through a fade to black or customized color. The PIP opening offers a choice between Cut and Fade.
- ◆ Each of the four inputs is fitted with a stereo audio line. The audio can either follow or break away from the video image.

- ◆ Up/down video and computer scaler ready to fit the native resolution of the latest HD display devices. It provides a high quality image thanks to its high quality digital decoder, improved 3:2 and 2:2 pull down circuitry, auto-adaptative pixel by pixel 3D motion compensation, time base corrector, frame rate converter & follower.
- ◆ Dual RS-232 port for integral and automatic control of other devices in the installation.

Easy Cut (Mfr # ESC341 • B&H # ANESC341)CALL
Easy Fade (Mfr # EFD341 • B&H # ANEDF341)CALL
Quattro (Mfr # QTA401 • B&H # ANQTA401)CALL

Quattro D (Mfr # QTD402 • B&H # ANQTD402)CALL
Quattro FX (Mfr # QFX402 • B&H # ANQFX402)CALL
Quattro Vue (Mfr # QVP421 • B&H # ANQVP421)CALL

OCTO PLUS² • OCTO FADE² • OCTO FX²

High Resolution Digital and Analog, Computer & Video Scaler Seamless Switchers

The Octo Plus², Octo Fade² and Octo FX² are equipped with 8 universal A/V inputs including one DVI, and 3 outputs (two analog and one DVI). They perform an ultra fast and smooth transition between any video or computer sources. They also

allow true seamless switching between one computer input (direct) and any other video or computer input. Ideal for conference rooms, houses of worship and large screen projections. Otherwise the same, the Octo Fade² adds fade and titling effects, while the Octo Fade FX² steps-up with logo insertion (one animated and 8 stills) and a frame store.

- ◆ They provide high quality images thanks to their high quality digital decoder, improved 3:2 and 2:2 pull down circuitry, auto-adaptive pixel by pixel 3D motion compensation, TBC, frame rate converter & follower.
- ◆ Each of the 8 inputs is fitted with a stereo audio line. The audio can either follow or break away from the video image. One additional stereo audio input is provided to be mixed with the video audio input lines.
- ◆ High performance up/down video and computer scalers, they can fit the native resolution of the latest HD display devices.
- ◆ Image control over each input—brightness, contrast, color, hue, processing, aspect ratio, zoom, etc. can be set and stored in memory.
- ◆ Dual RS-232 port for integral remote control and automatic control of other devices in the installation.

Octo Fade² (and Octo Vue Fade) Step-up Features

- ◆ The Octo Fade² can mix a computer source with a title with any video or computer source. The title remains on the screen during the transition. The switcher also features a shadow title effect with settable vertical size and position that enhances the readability of the titling text over very bright images.
- ◆ Features cross-fade effects between computer and video (TV/HDTV) or computer sources, with adjustment of the cross-fading duration.

Octo FX² (and Octo Vue FX) Step-up Features

- ◆ The Octo FX² can store 8 still and one animated logos and 4 full frame images in 24-bit color. Recording is done either by direct acquisition from input source or from computer download of image files. Up to 2 logos can be assigned to each input to be displayed at any position on the output screen. Logos can have any shape due to the keying capability, and transparency is user adjustable. Full Frames can be used as PIP Background and welcome or transition images.
- ◆ The Octo FX² can store one animated logo in 24-bit color in its memory. Recording is done either by direct acquisition from input source or from computer download of image files. Logo can be displayed anywhere on the output screen and can have any shape due to the keying capability. Transparency is user adjustable.



OCTO VUE • OCTO VUE FADE • OCTO VUE FX

The Octo Vue is identical to the Octo Plus2 except it adds a true scaled preview and high resolution PiP in computer and video formats. Fitted with a true scaled Preview output, Octo Vue lets operators visualize any source before displaying it on the Main output. Preview output ensures easy and safe presentations since any video or computer source can be checked on a simple LCD screen before being shown to the audience. It also outputs stereo main and pre-list with level adjustment. Otherwise the same, the Octo Vue Fade adds fade and titling effects, while the Octo Vue FX steps-up with logo insertion (one animated and 8 stills) and a frame store.



Octo Plus² (Mfr # OCP803 • B&H # ANOCP803)CALL
Octo Faze² (Mfr # OFD803 • B&H # ANOFD803)CALL
Octo FX² (Mfr # OFX803 • B&H # ANOFX803)CALL

Octo Vue (Mfr # OVP831 • B&H # ANOVP831)CALL
Octo Vue Fade (Mfr # OVf831 • B&H # ANOVf831)CALL
Octo Vue FX (Mfr # OVX831 • B&H # ANOVX831)CALL

SPECIFICATIONS

	Easy Cut	Easy Fade	Quattro	Quattro D	Quattro FX	Quattro Vue	Octo Plus ²	Octo Fade ²	Octo FX ²	Octo Vue	Octo Vue Fade	Octo Vue FX
Transition Effects												
PIP	-	-	-	-	-	✓	-	-	-	✓	✓	✓
Cross Fade	-	✓	-	-	✓	-	-	✓	✓	-	✓	✓
Titling	-	✓	-	-	✓	-	-	✓	✓	-	✓	✓
Cut - Seamless Switching	✓	✓	-	-	✓	✓	✓	✓	✓	✓	✓	✓
Clean Cut - Smooth Switching	-	-	✓	✓	✓	✓	✓	✓	✓	✓	✓	✓
Inputs												
# of Inputs (Universal* / Video / Computer)	- / 4 / 3	- / 4 / 3	4 / 4 / 4	4 / 4 / 4	4 / 4 / 4	4 / 4 / 4	8 / 8 / 8	8 / 8 / 8	8 / 8 / 8	8 / 8 / 8	8 / 8 / 8	8 / 8 / 8
Automatic Set up	-	-	✓	✓	✓	✓	✓	✓	✓	✓	✓	✓
Automatic Standard Detection (NTSC - PAL - SECAM)	✓	✓	✓	✓	✓	✓	✓	✓	✓	✓	✓	✓
DVI-D	-	-	1	1	1	1	1	1	1	1	1	1
Outputs												
1024x768 (XGA)	-	-	-	-	-	✓	-	-	-	✓	✓	✓
# of Outputs (total)	1	1	1	2	2	2	3	3	3	3	3	3
up to 1600x1200 (UXGA) & 1920x1080p (HDTV)	✓	✓	✓	✓	✓	✓	✓	✓	✓	✓	✓	✓
DVI	-	-	-	✓	✓	✓	✓	✓	✓	✓	✓	✓
Computer RGBHV - RGBS - RGSB (SOG)	✓	✓	✓	✓	✓	✓	✓	✓	✓	✓	✓	✓
Frame Rate Conversion	✓	✓	✓	✓	✓	✓	✓	✓	✓	✓	✓	✓
Follow Mode (same as input frame rate)	✓	✓	✓	✓	✓	✓	✓	✓	✓	✓	✓	✓
Adjustment and Control of Images or Inputs												
Auto Centering (Auto Pixel/Phase)	-	-	✓	✓	✓	✓	✓	✓	✓	✓	✓	✓
Horizontal and vertical positioning and sizing	✓	✓	✓	✓	✓	✓	✓	✓	✓	✓	✓	✓
Memory Presets (Input/Output)	✓	✓	✓	✓	✓	✓	✓	✓	✓	✓	✓	✓
Input Aspect Ratio (4/3 - 16/9 - anamorphic)	✓	✓	✓	✓	✓	✓	✓	✓	✓	✓	✓	✓
Freeze and Zoom	✓	✓	✓	✓	✓	✓	✓	✓	✓	✓	✓	✓
Zoom	✓	✓	✓	✓	✓	✓	✓	✓	✓	✓	✓	✓
Brightness - contrast - color - tint (NTSC)	✓	✓	✓	✓	✓	✓	✓	✓	✓	✓	✓	✓
Sharpness	✓	✓	✓	✓	✓	✓	✓	✓	✓	✓	✓	✓
Black level	-	-	✓	✓	✓	✓	✓	✓	✓	✓	✓	✓
Horizontal Smooth	-	-	✓	✓	✓	✓	✓	✓	✓	✓	✓	✓
Logos and Frame Stores												
# of Full Frame Stored	1	1	-	-	4	-	-	-	4	-	-	4
# of Logos Stored	-	-	-	-	8	-	-	-	8	-	-	8
# of Animated Logos	-	-	-	-	1	-	-	-	1	-	-	1
Other Features												
Test Patterns			✓	✓	✓	✓	✓	✓	✓	✓	✓	✓
Audio Stereo	✓	✓	✓	✓	✓	✓	✓	✓	✓	✓	✓	✓
Remote Control Keypad (sold separately)			✓	✓	✓	✓	✓	✓	✓	✓	✓	✓
Remote Control by RS232 + 2nd for video projector	✓	✓	✓	✓	✓	✓	✓	✓	✓	✓	✓	✓
LAN Control (TCP/IP) - optional	✓	✓	✓	✓	✓	✓	✓	✓	✓	✓	✓	✓

* Universal Inputs accepting Composite, PAL or NTSC, S.Video, YUV, RGBS, RGSB, RGBHV, Computer up to UXGA or 1080p, HD-YUV 1080i, 720p, 1080p signals.

AXION

Remote Controller Large Events/Multi-Venues

Axion is a powerful, high-end remote controller designed to manage, independently or simultaneously, several switchers of the iX, Octo Vue, Octo2, Quattro ranges and other systems, either as stand alone boxes or any kind of combination, including soft-edge blending. Once connected to the Analog Way switchers, Axion can control up to 6 independent screen configurations in different locations (single display or multiple projectors in soft-edge blended mode).



- ◆ Axion controls all the effects and functionalities of the iX switchers:
 - Control of soft-edge blended presentations, on up to 6 different screens, horizontally or vertically
 - Size, shape, and position of the PIP
 - Transition effects
 - Control of sequences,
 - Configuration of each input/output of the controlled switchers
- ◆ Joystick with direct effect access for easy and fast setup of image or effect parameters.
- ◆ Designed with a 7-inch 16:9 TFT color touch screen for preview of all configurations, Axion is especially dedicated to facilitate the setting and programming of presentations on multi-screens. It perfectly fits high end large events with multi-rooms and very large screens using soft-edge blended technology.
- ◆ Equipped with RS-232, RJ-45 Ethernet and a USB port, allowing complete configuration of an event to be saved for future use.
- ◆ With its robust and "Live resistant" buttons and its quality T-Bar and joystick, Axion will help to manage multi-screen, multi-location live presentations with a total peace of mind.
- ◆ Numerous user friendly, customizable and configurable presets enable preparation of the screen configuration, so that they are easily accessible during the presentation. A last minute modification is easy thanks to the direct input/output selection access.
- ◆ Buttons for direct access to inputs, switchers
- ◆ User programmable buttons
- ◆ T-Bar for smooth manually controlled transitions
- ◆ Take, Freeze, Main and Preview selection

Axion (Mfr # ARC100 • B&H # ANARC100)**CALL**

TRIPLIX Event Remote Console



TripliX can simultaneously or independently control up to three Di-VentiX, EventiX, CentriX or NatiX switchers. Up to 24 sources can be displayed on 3 screens (6 in matrix mode). All

the sequences and effects of the iX Range (cut, fade, titling, PIP and wipe) can be synchronized or separately activated, automatically or with the T-Bar. TripliX is compact, easy to use and to connect, and designed to be integrated in any 19" rack control room. The combination of TripliX and an iX Seamless Switcher can be used together with Show Manager Open Edition and/or Cross Blender for spectacular wide screen presentations. (Mfr # TRC8022 • B&H # ANTRC8022)

RK-8022-T Remote Controller

The RK8022-T can individually control the Di-VentiX, EventiX, CentriX and NatiX. Equipped with an LCD screen, a T-Bar and numerous keys for direct access to most useful functions, RK8022-T ensures a perfect control of the switcher connected to it. Compact and easy-to-use, connects via RS-232 port or by TCP/IP. (Mfr # RK8022-T • B&H # ANRK8022T)



RKD500-T Remote Controller

The RKD500-T can control each Switcher of the Octo Vue Range. It is also compatible with the Octo2 and Quattro Switchers. Equipped with an LCD screen, a T-Bar and numerous keys for a direct access to most useful functions, RKD500-T ensures a perfect control of the switcher connected to it. Compact and easy-to-use, connects via RS-232 port or by optional TCP/IP. (Mfr # RKD500-T • B&H # ANRKD500T)



RKD100 Remote Controller

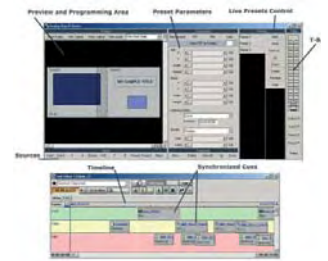
RKD100 is a remote control keypad for the Octo2 and Quattro range of switchers. Especially designed for integration, it performs all audio and video switching operations. Connect via RS-232 port. It is powered by the Switcher it is connected to and does not require any external power. Is also compatible with the switchers of the Octo Vue Range for a use limited to the main switching operations. (Mfr # RKD100 • B&H # ANRKD100)



MANAGER STAGE

Show Control Software for Di-VentiX and EventiX Switchers

Manager Stage for Analog Way is based on the show control software Manager Stage by Medialon. A specific plug in for Di-VentiX or EventiX, it allows the control of an unlimited number of image processors from a single PC. Its graphical programming interface represents your projection area and allows easy preview and programming of layout and transition effects. Layout and transition effects are stored in presets which can be recalled live during your presentation, or synchronized on a timeline. Presets can even be edited live during preview, just before being sent on screen. Effects such as PIP, wipe, fading, titling, mixing and seamless switching are supported by Manager Stage. Thanks to its graphical user interface, Manager Stage also gives you a unique automation tool to program and run large screen presentations. Even small events benefit from amazing effects which can only be achieved with a powerful software tool.



Mfr # MMSAW • B&H # ANMMSAW

Programming

A preset is both a layout (ie. position of sources in window on your projection area) and an associated transition effect. Just drag and drop windows, assign sources and transition effect, run for pre-monitoring and store as a preset.

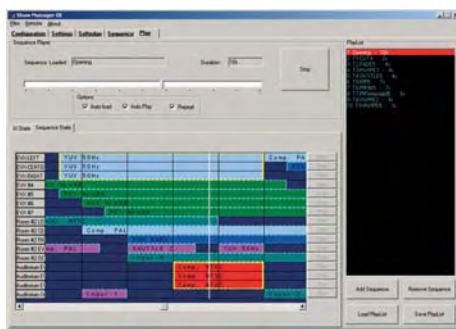
Live Show

All recorded presets are available randomly at a click of a mouse to be recalled and previewed on the computer screen. After recall, a preset can be edited just before being sent or sent directly by moving the T-bar.

Pre-canned Show

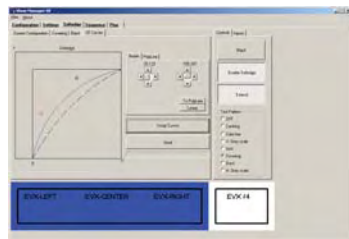
Presets can be recalled from a Timeline to be synchronized and sequenced accurately together. Even in this mode, live recall and edition of preset is still available. Automatic start, loop, pause and many other features can be programmed in timelines.

SHOW MANAGER OE (Open Edition)



Show Manager OE (Open Edition) is specifically designed for large events that require the control of up to 16 display devices. This software can simultaneously manage up to 16 EventiX from a single PC, program sequences visually and intuitively, and switch

from one source to another with their associated transitions.



This programming does not require any technical skills. Once the sequences are recorded, the video or computer images can be displayed as a time line on the large screen, using various effects such as PIP, wipes, fading, titling, mixing or seamless switching. Fully automated, Show Manager OE is easy

to use and offers amazing possibilities to make your events unforgettable.

Show Manager OE Mfr # SWM-OE • B&H # ANSWMOE)CALL

	Axiom	Triplex	RK8022-T	RKD500-T	RKD100	Show Manager OE	Manager Stage
ix Range	✓	✓	✓	—	—	✓	✓
Octo Vue Series	✓	—	—	✓	✓	✓	✓
Octo ² Series	✓	—	—	✓	✓	✓	✓
Quattro Series	✓	—	—	✓	✓	✓	—
T-Bar	✓	✓	(1)	(1)	✓	✓	✓
Ethernet (RJ45)	✓	—	✓	option	option	—	—
Programmable Sequences	✓	—	—	—	—	✓	✓
LCD for Control Menu	✓	✓	✓	✓	—	—	—
Touch Screen	✓	—	—	—	—	—	—
Joystick	✓	—	—	—	—	—	—
USB Port	✓	—	—	—	—	—	—

(1) Also available without T-Bar

SCREENPRO-II

High Resolution Seamless Switcher

The ScreenPRO-II is a high-resolution multi-layer video display system that combines seamless switching with a variety of creative video effects. The result is a versatile video production tool for both live event staging and fixed installation applications. To produce its array of effects, ScreenPRO-II uses five image layers: one unscaled background, two scaled inputs (for PIPs or Keys), one unscaled downstream key (DSK), plus a full-screen Logo that uses captured frame grabs as sources. With this creative palette at your fingertips, you can transition backgrounds, transition PIP windows, perform wipes, dissolves and keys, fly PIPs and Keys on and off screen, and much more. The system's flexibility is remarkable — using the mixer's two scaled inputs, you can mix within a PIP, or display two independent PIPs (or Keys) over a background. In addition, two unscaled high-resolution inputs enable you to transition seamlessly between backgrounds, or use a background plus a high-resolution DSK. With ScreenPRO-II, the term "seamless" goes far beyond the ability to create clean, glitch-free switches between inputs. With a typical single-format switcher (such as an all-SDI system), "seamless" is easy — because input timing is uniform. However, when multi-format and multi-resolution sources are connected simultaneously, the clean switching challenge arises, and that is precisely where ScreenPRO-II shines. Whether it's RGB, composite, component, SD-SDI, HD-SDI, or computer resolutions up to UXGA, ScreenPRO-II's twin Athena scalers enable you to seamlessly cut, wipe, dissolve and move — without restriction.



FEATURES

Superior Video Processing

- ◆ Support for input and output resolutions up to UXGA, including all HD resolutions up to 2048x1080p
- ◆ 10-bit processing, with 1:1 pixel sampling
- ◆ Motion adaptive de-interlacing (SD & HD)
- ◆ 3:2 and 2:2 pull down detection
- ◆ Image cropping and aspect ratio correction

System Capabilities

- ◆ Athena high-performance scaling
- ◆ Multiple output synchronization modes: free-run or vertically locked to NTSC/PAL black burst, CSync or HD tri-level sync
- ◆ 3RU rack-mount chassis
- ◆ Low video delay — less than 3 input fields (60ms @ 50Hz, 50ms @ 60Hz)

Internal Routers

- ◆ Basic model includes internal 8 x 2 analog video router (for selecting scaler inputs), plus two DVI-D inputs for unscaled backgrounds and DSK
- ◆ HD model includes basic components (as above), plus internal 2 x 2 HD-SDI/SD-SDI router

Channel Capabilities

- ◆ Two independent PIP windows (scaled), or 1 PIP with seamless transitions within
- ◆ Two unscaled high resolution background channels provide video underneath PIPs and Keys. Dissolve or cut between background channels.
- ◆ One unscaled high resolution DSK channel, independent of the PIP/Key processing channels

PIP Effects

- ◆ Full range of transitions, such as cuts, wipes and dissolves
- ◆ Smooth PIP moves, on and off screen, with keyframe-controlled sizing and positioning
- ◆ Adjustable PIP aspect ratio and borders, including drop shadows and soft edge

Keying Effects

- ◆ Luminance keys
- ◆ Invert keys (key source luminance video inverted)
- ◆ Color keys (using absolute luminance values of Red Green and Blue)

Advanced Features

- ◆ Switchable basic and advanced operating modes
- ◆ Programmable mattes
- ◆ Dynamically re-assignable mixer layers: In Mix mode, a mixer's two layers are tied together. In Split mode, the two layers are independent.
- ◆ Three internal frame stores are standard, in which you can store three frame grabs. With the optional Enhanced Output Card (EOC) installed, you can store 100 frames. Frame grabs can be used as backgrounds, DSK sources and logos.
- ◆ Z-order control for assigning overlay priorities to PIPs or Keys. Complete lookahead preview.

SCREENPRO-II

Encore Presentation System

Using the Encore Presentation System, one or more standalone ScreenPRO-II units can be controlled as unique "destinations" within Encore's dynamic event control environment. The compact SC Encore controller supports 24 inputs, up to 6 destinations, and stores up to 64 presets. Also supports most ScreenPRO-II functions, and include a 3-axis Joystick and a T-Bar for manual transitions.
 (Mfr # R9860923 • B&H # BACSE)**9799.95**



ScreenPRO-II Controller

Using the optional ScreenPRO-II Controller, users can simultaneously (or individually) control up to four ScreenPRO-II switchers from a compact and versatile control surface. With easy setup and intuitive operations, the controller enhances PIP and KEY placement, source switching, and overall layer control. The controller also includes many features not available on the individual ScreenPRO-II units, including 36 presets, a 3-axis Joystick for easy PIP placement, key "cut and fill" mode, and a T-Bar for smooth manual transitions. In addition, a tally option is available for triggering up to eight tallies on cameras (or other devices), and the option also includes a keyboard input for labeling frame grabs.



ScreenPRO II Controller (Mfr # R9860205 • B&H # BASPC2)**4999.95**
ScreenPRO II Controller with Tally/PS2 Card (Mfr # R9860206 • B&H # BASPC2T)**5243.95**

MATRIXPRO DIGITAL SERIES

8x8, 16x16 HD-SDI and 16x16 SDI Matrix Switchers

The MatrixPRO Digital Series offers three (8x8, 16x16 HD-SDI and 16x16 SDI) serial digital matrix switchers for routing of SDI and HD SDI video signals: The HD-SDI models allow users to route either HD-SDI or SDI signals. The SDI unit will only pass SDI signals. Each input and output is individually isolated. These inputs can be switched to any one or all outputs with no crosstalk or signal noise between channels. Units are rack-mountable and each includes RS-232/485 capability. They come standard with Ethernet port for IP control, and an easy to operate front panel interface for simple input and output selection. Each can be connected to an optional Remote Control interface for input and output selection. MatrixPRO grouping matrix allows the routers to be divided into smaller sub switchers, making installation and control easier. I/O grouping allows specific outputs to be grouped together, such as those for all HD-SDI formats. Each features Vertical Interval Switching for all input channels.



- ◆ Inputs on all models meet SMPTE 259M compliance. The HD-SDI models also meet SMPTE 292M standards.
- ◆ Outputs on all models meet SMPTE 259M compliance. The HD-SDI models also meets SMPTE 292M and the SDI models also meets SMPTE 344 compliance.
- ◆ Three switching modes: Front Panel, External remote (OPTIONAL) or via MP software GUI program.
- ◆ IP (Ethernet) control standard
- ◆ Front panel lock out
- ◆ I/O grouping allows specific outputs to be grouped together.
- ◆ Vertical interval switching
- ◆ Large LCD display allows for easy navigation of menus and provides visual verification of information.
- ◆ Fully field programmable to support upgrades.
- ◆ Backed by a three-year warranty.

8x8 SD/HD-SDI Video Switcher
 (Mfr # R9860499 • B&H # BAMP88HD)**4423.95**
16x16 SDI Video Switcher
 (Mfr # R9860554 • B&H # BAMP1616SDI)**4899.95**
16x16 SD/HD-SDI Video Switcher
 (Mfr # R9860555 • B&H # BAMP1616HD)**8652.95**

SE-500

4-Input Analog Mixer/Switcher

The SE-500 is an analog input, digital processing video switcher. It features 4 composite and 4 S-Video inputs, 3-channel audio mixer, 2 microphone inputs, color correction, digital video transition effects, MIDI control interface, tally output, RS-232 remote control interface...and more.

A built in TBC in each channel with YUV 4:2:2 frame synchronizer for the composite and S-Video inputs/outputs assures stable and high quality video from virtually any source. A built in RGB Color Processor and a color corrector for each video input, with settings that are saved, allow you to fine tune your video. The SE-500 has 15 different digital effects, which include Quad, Split, PiP, Wipes, and Fade. Additionally, the SE-500 includes a unique "Quad Preview." This preview displays both tally light signals, and next video effects indicator. The operator can use one single monitor to observe four video input sources, camera activities, and video transition effects.



Shoot, mix, and edit with this compact switcher. With the optional DataVideo DAC-6 (DV to composite, S-Video, component) converter, VP-314 (DV Repeater), and 33', 65' and 125' DV cables, you can feed the mixer from DV cameras from up to 600' away.

FEATURES

- ◆ Digital effects include: A/B roll, A/B dissolve, Quad (effect combines four input sources into a single output on the program monitor), Split Video Effect, PiP, Wipe, and Fade digital video effects. Control the border style and color for the PiP effect, and the color edge for the Wipe effect.
- ◆ Split Video Effect splits the selected Sub Video Video Source into left and right half size video screen. Use left and right function key to swap sides.
- ◆ The SE-500 also does three kinds of transitions: cut, fade, and wipe.
- ◆ No genlock required as each channel includes a built-in TBC with YUV 4:2: frame syncs for composite and S-Video inputs.
- ◆ Picture-in-Picture (PiP) transitions can be programmed to position in various parts of the frame.
- ◆ T-Bar lets you manually perform effect transitions.
- ◆ A tally output (Red, Amber, and Green color tally signals) is offered on a DB-15 connector (requires the TB-5 Tally Box).
- ◆ Four composite and four S-Video inputs, two composite and one S-Video output. With the supplied breakout cable, one composite and one S-Video output can be converted into a 3-wire component output.
- ◆ Color processor (brightness, contrast, color, tint) for video correction
- ◆ Quad split monitoring offers a preview of each input on one monitor with tally and transition indicators on screen
- ◆ Real time Quad Split Preview includes red, yellow and green markers to indicate the program, preview and other sources as well as the next selected effect. And, there is a button that will cause the preview display to show the next selected effect. Users can use one monitor to observe all sources and the next selected video effect before broadcast.
- ◆ Audio mixer with two mono 1/4" mic inputs and stereo RCA aux input allows you to adjust and balance the volume from various audio sources. LED style audio meters show the signal strength at the audio output.
- ◆ Stereo headphone jack with volume control
- ◆ Easy titling with the optional CG-100 Character Generator
- ◆ MIDI control interface to connect to other MIDI devices, such as MIDI keyboard and electronic piano, to create programs synchronizing audio and video for presentation applications.
- ◆ RS-232 port enables external control of the SE-500 from a PC or other device

SE-500: 4-input Analog Switcher with cables (Mfr # SE-500 - NTSC • B&H # DASE500) **1055.00**

SE-500P 4-input PAL Analog Switcher (Mfr # SE-500 - PAL • B&H # DASE500P) **1150.00**

SE-500KIT: Includes the SE-500, TLM-702 Monitor and RKM-572 Monitor Mount (Mfr # SE-500 KIT • B&H # DASE500KI) **2063.00**

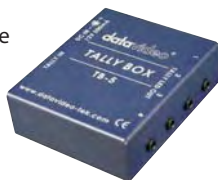
HS-500 Hand Carried Studio: The SE-500 is available in a suitcase-like carry case that includes the TLM-702 monitor and is wired and ready to edit upon opening (Mfr # HS-500 - NTSC • B&H # DAHS500) **2099.95**

MS-500 Mobile Studio-see next page (Mfr # MS-500 - NTSC B&H # DAMS500) **5944.95**

SE-500 ACCESSORIES

TB-5 Tally Box

A tally accessory for the SE-500, the TB-5 takes tally commands from the SE-500 and turns on/off up to four TD-1 tally lights to indicate next Source and Program. The tally lights are connected and powered by mini phono plugs. (Mfr #TB-5; B&H #DATB5)**148.95**



ITC-100 Intercom System

An innovative, 8 remote-user and base station intercom that can use low cost phone headsets or high quality, professional units. Users are connected to the base station via belt packs and 65-ft. audio cables (5-pin XLR connectors) that may be extended up to 1000-ft. Includes four wired belt packs, four 65-ft. cables, four headsets and four tally lights. (Mfr # ITC-100 • B&H# DAITC100)**1055.00**



DAC-6 DV to Analog (one-way) Converter:

Designed to allow DV cameras to be used with the SE 500, the DAC-6 is a stand-alone converter that takes a DV signal in and converts it to composite, S-Video or component output. It is a very compact converter and can be run from a 12v battery in the field, or via included power adapter. (Mfr #DAC-6; B&H #DADAC6)**249.95**

RMC-150 Ethernet Control Box

The RMC-150 is an Ethernet (TCP/IP)-based control box for use with the SE-500. Used in conjunction with the included controller software, you can control the entire SE-500 from your PC desktop. (Mfr # RMC-150 • B&H # DARMC150)**Call**



VP-314 Bi-directional DV Repeater

The VP-314 is a rugged and small self-powered in-line digital repeater that extends 6-pin Firewire (IEEE1394) cables without the need for an additional power source. It ensures minimum data loss and has a cable lock-in feature that maintains maximum stability. Also comes with wire ties. (Mfr #VP-314 • B&H #DAVP314)**58.00**

TLM-702

Dual 7" Color LCD Monitor Rack

The TLM-702 is comprised of two high resolution (1440 x 234) 7" LCDs in a rackmount panel. Each monitor has two NTSC/PAL compatible (with auto detection) composite video inputs (BNC) with bypass outputs. Pivoting mount enables the screens to be angled up or down. They offer wide +40/-60° vertical and ±60° horizontal viewing angles, as well as switchable 16:9 /4:3 aspect ratio. Front panel picture adjustments include color, contrast, tint (NTSC only), and brightness. Control dials are recessed and there is a 2-color tally light system (red and amber). The all-metal construction makes the TLM-702 robust and durable, and the 12v power requirement makes it easy to power in the field.



TLM-702 Dual 7" Color TFT LCD Monitor Rack (Mfr #TLM-702; B&H #DATLM702)**816.00**

RKM-572 Monitor Mount: The RKM-572 is a holder and mount for the TLM-702 monitor. Allows the monitor rack to be mounted to the SE-500 mixer. Allows viewer adjustment and features a professional appearance. (Mfr # RKM-572 • B&H# DARKM572)**199.95**

TLM-404 Quad 4" LCD Monitors

The TLM-404 includes four 4" LCD monitors in a 19" rackmount (2RU high). It has a NTSC/PAL composite (BNC) video input (with 75 ohm self terminating pass through) and output for each monitor. It can tilt up to ±30° and lock in any position. Front panel controls include contrast, brightness, tint (NTSC only) and color. Control dials are recessed, and a 3-color tally light system indicates different program status. (Mfr #TLM-404 • B&H #DATLM404)**1248.00**



CG-100SP Character Generator Software & DeckLink Card:

The CG-100 works with a Blackmagic DeckLink PRO card installed in a PC. The system may be set up as a downstream keyer (DSK) to take S-Video out from the SE-500 or as an upstream keyer to place text over incoming S-Video source. For more info see page 856 (Mfr # CG-100D SP • B&H # DACG100DSP)**1349.95**

HS-500 (Hand Carried Video Studio)

A mobile studio in a lightweight suitcase. Includes the SE-500 switcher, TLM-702 monitor, aluminum briefcase-style carrying case and all necessary cables. A door in the back of the case allows for easy cable access. Measures 21.9 x 16.9 6.1" (WxDxH) (Mfr # HS-500 -NTSC • B&H # DAHS500)**2099.95**



MS-500 (Mobile Studio)

A convenient way to edit analog composite or S-Video, speak to camera operators, and have an optional DVD player or any other 1RU device, all in one case. Includes SE-500 switcher, TLM-702 monitor, ITC-100 intercom kit with belt packs, cables and headsets for 4 users, RP-10 lockable pull-out shelf for the ES-500 and PD-1 power distributor. (Mfr # MS-500 • B&H # DAMS500)**5944.95**



SE-800AV • SE-800DV

4-Input Analog & Analog/DV Mixer/Switchers

The SE-800AV (analog) and SE-800DV (analog and DV) switchers are a quick and affordable way to build a small studio. Standalone, supporting four video inputs, the switchers can be optimized with a host of accessories for schools, churches, municipal, or corporate applications. Users have the flexibility to configure their systems as they wish and can put different content experts on each task: editing, audio, CG. Both are equipped with four component, composite and S-Video inputs and include an internal six channel audio mixer with mic and line level audio inputs. They don't require any genlock for analog sources and can process 16:9 video in SD format.

Both have RGB adjustment, digital effects, programmable transitions, RS-232 I/O, GPI input and include a carrying case. They have a PiP

(picture-in-picture) function

and an audio/video synchronizer so

audio can be adjusted to match the picture. Tally lights, CGs, next source preview options, long DV cables (up to 600-ft.), intercoms, remote consoles, network PC software, and balanced audio I/O are available.

The SE-800DV adds four DV inputs and an SDI output. It can also embed the synchronized audio in the DV stream so recorded programs may be converted to DVDs or used for editing without additional A/V synchronization. Last, an SDI Overlay I/O port allows use of a PC as a character generator and/or graphics source.



SE-800 with TLM-404 Monitor and ITC-100



SE-800AV Rear View



SE-800DV Rear View

FEATURES

- ◆ Over 50 programmable digital effects including A/B rolls and dissolves, Chroma-Key, Mosaic, Picture in Picture, Strobe, Fades, and Wipes.
- ◆ Dual channel TBC with YUV 4:2:2 frame synchronizer for composite, S-Video and component inputs and outputs assures stable and high quality video from virtually any source. "Hot-punch" between any of the six inputs, including the computer DVI input.
- ◆ Full-size control panel includes user programmable macro function keys that let you play back 30 preset transitions and effects instantly by pressing a single key.
- ◆ The full-size keypad and control panel and port for an optional tally system make them an affordable solution for both live studio and post-production applications.
- ◆ Voice Sync control lets you slew the voice relative to the image adjusting from (audio advanced) to (audio delayed). Works in all formats, including DV.
- ◆ They can serve as a sync reference for analog cameras, projectors, scan converters, etc.
- ◆ A four-channel (unbalanced) stereo input mixer with LED level indicators and separate volume controls, stereo mic inputs and automatic audio follow video switching takes care of almost any audio need. An earphone jack with volume control is also provided.
- ◆ Built-in RGB Color Processor and a Color Corrector for each input with saveable settings allow you to fine tune your video.
- ◆ The RS-232 port enables a remote control front panel thru PC-RS232 port or connection of the Datavideo RMC-90.
- ◆ GPI input to control preprogrammed effects from F01 to F30 in sequence.
- ◆ The SE-800 comes complete with a carrying case for increased protection in the field.
- ◆ Joystick control for RGB Color Correction (white balance corrections) or to position the PiP effect.

SE-800DV Only

- ◆ Built-in high-quality Datavideo format converters provide simultaneous analog and digital audio and video outputs.
- ◆ "SDI key" layer delivers excellent quality when used with Datavideo's CG-100 or any other character generator that outputs SDI.

SE-800AV 4-input A/V Mixer
(Mfr # SE-800AV • B&H # DASE800AV)**2688.00**

SE-800AV 'PAL' 4-input A/V Mixer
(Mfr # SE-800AV • B&H # DASE800AVP)**2688.95**

SE-800DV 4-input A/V Mixer
(Mfr # SE-800DV • B&H # DASE800DV)**CALL**

SE-800DV 'PAL' 4-input A/V Mixer
(Mfr # SE-800DV • B&H # DASE800DVP)**4799.95**

DV Input Card for SE-800AV
(Mfr # SE800VIN • B&H # DASE800DVPIN)**272.95**

DV Output Card for SE-800AV
(Mfr # 800DVO • B&H # DA800DVO)**526.951**

SDI Output/Overlay Card for SE-800AV
(Mfr # 800-SDI • B&H # DA800SDI)**924.95**

SE-800AV • SE-800DV ACCESSORIES

SE-800 Kits

SE-800AV with TLM-404 quad 4" LCD monitors, TLM-702 dual 7" color LCD monitors, RKM4N7 monitor holder for all six monitors, RMC-140 Tally Box, Red/yellow LED tally lights (B&H# DASE800AVK2)**CALL**
Same as above plus ITC-100 Intercom (B&H # DASE800AVK3)**CALL**

SE-800DV with TLM-404 quad 4" LCD monitors, TLM-702 dual 7" color LCD monitors, RKM4N7 monitor holder for all six monitors, RMC-140 Tally Box, Red/yellow LED tally lights (B&H# DASE800AVK2)**CALL**
Same as above plus ITC-100 Intercom (Mfr # SE-800DV+1KITINTERCOM • B&H # DASE800DVK4)**CALL**

SE-800 Mobile Studios

MS-800AV with TLM-404 monitors, TLM-702 monitors, ITC-100 Intercom, DN-300 HDD Recorder (up to 19 hours of video) , PD-1 Power Center, RP-1, RP-2, RP-4, RP-9, RP-17, RP-23, CCS-M1 Aluminum Carrying Case— assembled and tested. (Mfr# MS-800AV)**CALL**

MS-800DV with TLM-404 monitors, TLM-702 monitors, ITC-100 Intercom, DN-300 HDD Recorder (up to 19 hours of video) , PD-1 Power Center, RP-1, RP-2, RP-4, RP-6, RP-9, RP-23, CCS-M1 Aluminum Carrying Case— assembled and tested. (Mfr# MS-800DV)**CALL**

BAC-03 Balanced Audio Converter



The BAC-03 is a powered, bi-directional (unbalanced

to balanced and balanced to unbalanced) audio level converter for the SE800AV/DV with four independent amplifiers providing stereo audio input and output. (Mfr #BAC-03 • B&H #DABQ)**224.95**

RMC-120 Ethernet Control Box

The RMC-120 is an input controller that allows the SE-800 mixers to be used remotely via Ethernet connection from a computer. (Mfr# RMC-120 • B&H# DARMC120)**249.95**

PD-1 Power Distribution Center

The PD-1 Power Distribution center eliminates wall warts and dangling power supplies. It can be powered by a DC supply (mobile) or by an AC supply. (Mfr # PD-1 • B&H # DAPD1)**671.00**

RMC-140 Preview Tally Box with Tally Lights

The RMC-140 is a preview accessory that allows you to select the main output from one of four different video sources in the SE-800 by looking at the TLM-404 LCD monitor or other similar products. You might not know which camera source you want to switch to. With the RMC-140, everything is fast and easy. You can see next source preview and next transition effect indicator showing on the same monitor. It will display your choice of next source, quad split with colored indicators, PIP (picture-in-picture) or POP (picture-outside-picture). The tally lights can be connected and powered by mini phono plugs or DB15 tally output connector. Tally light alerts studio members to the status of cameras and bring more professionalism to the job. (Mfr #RMC-140 • B&H #DARMC140)**479.00**

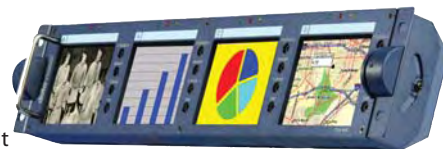


RMC-90 Remote Control Panel

Working simultaneously with the SE-800 control panel, the RMC-90 provides a wired remote function of video channel selection keys, programmable effect function keys, T-Bar control...most of the control key functions from SE-800. It includes a tally control for the TLM-404 and three GPI triggers to control Datavideo's DV Bank. (Mfr #RMC-90; B&H #DARMC90)**CALL**

TLM-404 Quad 4" LCD Monitors

The TLM-404 includes four 4" LCD monitor in a 19" rackmount (2RU high). It has a NTSC/PAL composite (BNC) video input (with 75 ohm self terminating pass through) and output for each monitor. It can tilt up to ±30° and lock in any position. Front panel controls include contrast, brightness, tint (NTSC only) and color. Control dials are recessed, and a 3-color tally light system indicates different program status. (Mfr #TLM-404 • B&H #DATLM404)**1248.95**



RKM-4N7

Holder mount that allows both the TLM-404 and TLM-702 to be mounted to the SE-800 mixer. The RKM-4N7 unit has simple viewer adjustments along with a professional appearance perfect for production facilities and studios. (Mfr #RKM-4N7 • B&H #DARKM4N7)**359.95**

TLM4N7PK Monitor Rack Kit

Ideal for high-end video studios or production facilities while maintaining a modest frame that can fit almost anywhere, this 6 LCD monitor kit includes the RKM-4N7 holder, the TLM-404 and TLM-702 LCD monitor racks. (Mfr #LM4N7PK • B&H #DATLM4N7PK)**2300.00**



VP-332 Bi-directional DV Repeater and Hub

The VP-332 provides six Firewire (IEEE1394) ports to add five additional ports for either a PC or Mac system. Each port contains its own LED indicator which lets you know if power is current on that particular port. The Hub also lets you share information with other computers to form a network-like environment. Devices can be connected and disconnected without turning the computer off. Up to 63 Firewire devices can be daisy-chained. The repeater also extends the distance limitations of traditional Firewire connections. Firewire specification allows for a cable length of 15-ft., the Repeater extends the length an additional 15-ft. The unit is powered either from the host computer or by its own DC connector. (Mfr #VP-332 • B&H #DAVP332)**84.50**

SE-900

8-Input SD Switcher

The SE-900 is an 8-input standard definition switcher with a core feature set that may be expanded with additional input cards and accessories. A two-piece switcher (control panel and rack mounted processor), the SE-900 accepts a mix of 8 input cards in your choice of formats including DV, SDI, DVI, YUV and composite. **(The SE-900 does NOT include any input cards, they must be purchased separately).** Standard outputs include DV, component, composite and S-Video. No genlock is required because each switcher input includes a frame synchronizer and TBC. To enable existing studios requiring a switcher to be slaved to house reference, an accessory genlock input card is available. Preview functions include both "next source" and "next effect" so you can see how it looks before your audience does. The SE-900 also including an audio delay for DV, and an audio embedder for the SDI stream. Character generation is done with a down stream keyer (DSK) and Datavideo's CG-100 software.



FEATURES

- ◆ Up to 8 inputs in any combination of standard definition (SD) formats— SDI, DV, DVI, YUV, composite, depending on the optional input boards selected. Each input includes frame sync and TBC.
 - ◆ Outputs include any combination of SDI, DV, composite, component and S-Video depending on the output cards selected.
 - ◆ Standard outputs include DV, component, composite and S-Video.
 - ◆ No genlock required, built-in frame synchronizers allows flicker-free switching
 - ◆ Two preview options:
 - Normal view shows next source, preview is shown by pressing the PVW key.
 - Multi-image view shows sources plus preview and program on one screen, output via component or composite video.
 - ◆ Adjustable audio delay up to 17 frames
 - ◆ Over 50 digital effects (including 15 transitions with border) at 6 speeds + 6 special effects.
 - ◆ PIP – three fixed sizes, able to move from off screen to off screen
 - ◆ SDI graphics overlay interface included – use any SDI CG with a DSK keyer
 - ◆ RS-232 and RS-422 remote control interfaces
 - ◆ Easy titling via optional CG-100 Character Generator.
 - ◆ Set-up up to four chromakeyed sources and mix them seamlessly with regular sources using the optional dual-channel chromakey. Each chromakey can accept two foreground inputs and two background inputs – internal chromakey switcher allows glitch-free switching between sources and backgrounds. Background and foreground selection is through the inputs to the switcher.
 - ◆ Color processor – white balance for each input.
 - ◆ Control up to 10 pre-programmed effects in sequence via GPI trigger
 - ◆ Audio may be embedded in the SDI stream
 - ◆ Balanced and unbalanced audio I/O
 - ◆ GPI input, tally output
- SE-900DV Kit:** Includes SE-900 Switcher, SDI overlay card, Chroma Key card, Six (6) DV input cards, Two (2) component/composite/S-Video input cards, Red/Yellow LED tally lights
(Mfr # SE-900DV KIT • B&H # DASE900DVK1)**8899.95**
- SE-900STD Kit:** Includes SE-900 Switcher, SDI overlay card, Chroma Key card, Six Four (4) DV input cards, Four (4) component/composite/S-Video input cards, Red/Yellow LED tally lights
(Mfr # SE-900STD KIT)**CALL**
- SE-900SDI Kit:** Includes SE-900 Switcher, Six (6) SDI input cards, Chromakey card, SDI output card, External Genlock card (Mfr # SE-900SDI KIT • B&H # DASE900SDIK1)**9199.95**
- MS-900 Mobile Studio:**
Includes SE-900 Switcher, TLM-170M 17" monitor, ITC-100KF1000 intercom kit with belt packs, cables and headsets for 6 users, two ITC-100SL sets for two more intercom users, DN-300 HDD recorder (for up to 19- hours of video), PD-1 Power Distributor, RP-17 Intercom breakout panel, RP-23 rackmount for DN-300, RP-28 hinged flip-down tray for SE-900 and CCS-M1 Aluminum Carrying Case
(Mfr# MS-900)**Call**



SE-1000

6-Input SD/HD SDI Switcher

A compact but powerful video mixer for small production companies, studios, mobile video applications, OB vans, post-production facilities, educational, churches and corporate production departments, the SE-1000 features 5 inputs (HDSDI or SDI) plus one computer and one still frame. And, it has three HDSDI or SDI outputs. The built-in 10-bit, 6-channel frame synchronizer adjusts automatically, and since all internal processing is done in HD, you'll get the most from every input. For those who wish, this switcher may be slaved to an external reference. To assist during live events, it offers 6-channel HD-SDI to HD/SD component, and composite video format conversion. This functionality enables the real-time monitoring of each input channel during production. This makes it ideal for venues with live HD projection and an audience that needs SD "take away" DVD's or SD for live webcasting. (Use the optional DAC-5 to convert SD-SDI to DV). Included is a Linear key and self key effect for easy titling or logo insertion, and can be used with an external character generator. Other features include 9 wipe patterns and 3 directional wipes. Because the unit operates in all recognized SD and HD formats, it can easily be integrated with existing as well as future equipment. It can be managed via RS-422 control or Ethernet connectivity.



FEATURES

- ◆ Five SDI inputs and one DVI scaled and sized to the current operational format of the switcher. You have critical control of the DVI scale, position, and sync. Analog and digital DVI is supported.
- ◆ The SE-1000 has an internal 1-frame sync to lock up any and all sources. You can "hot-punch" between any of the six inputs, including the computer DVI input. You can genlock everything and turn off the internal frame syncs to reduce the delay to one line. Perfect for live events where minimal delay is required.
- ◆ 6-channel SDI to analog video converter accommodates disparate needs of different users. It outputs in all 6 standards, either component or composite. Supported formats are 59.9i, 59.9p, 50i, and 50p in both NTSC and PAL.
- ◆ Set up the mixing bus just how you like it by adjusting the built-in crosspoint switcher. Maybe you like black on input one, or perhaps you want the computer (#6) on input 1.
- ◆ The AUX bus can be selected and changed in an instant, without ever touching a menu. This AUX output can be any of the 6 inputs, preview, program, or a clean program. This is useful for an isolated recording of a single camera, or a clean (graphics free) recording of the mixed show. Or you can send the graphics input to a monitor on stage for talent to see. It's completely independent of the main program mix.
- ◆ Six tally outputs when using the optional TB-10 Tally Box (includes Red/Yellow tally lights)
- ◆ Image upload via Ethernet port and included software.
- ◆ Built-in SMPTE color bar generator (can be used as 7th source)
- ◆ Easy titling with Datavideo CG -100 Character Generator

SE-1000 Kit: Includes SE-1000 Switcher, two TLM-433 units (three 16:9 SD composite monitors per unit), one RKM-3N3 holder for both TLM-433 monitors and one intercom, one TB-10 Tally Box with Red/Yellow LED tally lights included (Mfr # SE-1000 KIT • B&H # DASE1000KIT)**CALL**

SE-1000 Kit+I (Intercom): Same as above, plus one ITC-100F1000 intercom with red/yellow tally lights.....**CALL**

MS-1000 Mobile Studio: Includes SE-1000 Switcher, two (2) TLM-433 units (three 16:9 SD composite monitors per unit), TLM-170M 17" monitor, ITC-100KF1000 intercom kit with belt packs, cables and headsets for 6 users, DN-300 HDD recorder (up to 19 hours of video), PD-1 Power Distributor, RP-20 pull-out tray for SE-1000, RP-21 HD/SD-SDI and DVI input breakout panel, RP-22 Intercom breakout panel, RP-23 rackmount for DN-300 and CCS-M1 Aluminum Carrying Case (Mfr# MS-1000)**CALL**

CG-100

Character Generator Software

Based on a DeckLink® card in a PC, the CG-100 software is an affordable CG with exquisite SDI quality. The DeckLink card acts as a downstream keyer connected to the SDI Overlay/Graphics input on the SE-800DV or SE-800AV with SDI card. It will also work as a downstream keyer with any (SD) SDI source. CG-100 software allows you to pre-compose pages before going live and the amount of work you pre-generate is limited only by your computer's processing power, not the software itself. The system offers many ways to create and manage your presentations. Text positioning may be controlled by "eyeing" it or by using an X/Y pixel designation. Simple shapes, animations, group functions, redo/undo commands, and graphic imports provide many possibilities to enhance your messages. Moreover, this system also supports Unicode, ensuring true multilingual capabilities.

This system works with Windows-based PC systems and comes complete with the drivers necessary for the software to work with your system. It also supports NTSC and PAL video standards and works in either a 16:9 or 4:3 aspect ratio. Whether you'll be adding text to live video or using prepared screens, this system is ideal for television stations, churches, schools, corporate facilities, or other similar production environments.

- ◆ Pages can be composed and combined with animation effects, to run as a sequence, or displayed and edited live.
- ◆ Image objects may be imported as graphics and stored as part of the page.
- ◆ Simple shapes (bars, ellipses and rectangles) are menu items and may be added to the page.
- ◆ Text can roll and crawl.
- ◆ Animation objects can wipe, push and fade in various directions at different speeds.
- ◆ Redo/Undo functions for quick testing of an additional effect.
- ◆ Live editing mode provides a great flexibility to immediately edit other CG pages offline while another CG page is online.
- ◆ Group function makes CG combinations easy to be edited.
- ◆ Quick CG Text Editor allows navigation from page to page to modify text in a very productive way.
- ◆ Nine clipboard spaces can store and retrieve CG combinations from different pages and files.
- ◆ Stand-alone logo display function.
- ◆ Supports Windows Unicode for multi-language inputs



CG-100 Character Generator Software Only (requires DeckLink capture card) (Mfr #CG-100 • B&H #DACG100)**929.95**

CG-100D Character Generator Software with Standard DeckLink Card (SDI only) for SE-800DV or SE-800AV with SDI card. (Mfr #CG-100D; B&H #DACG100D)**1099.95**

CG-100D Pro Character Generator Software with DeckLink Pro Card (SDI with genlock input) for SE-800DV or SE-800AV with SDI card. (Mfr #CG-100D Pro; B&H #DACG100DP)**1449.95**

CG-100D SP Character Generator Software with DeckLink SP Card (Component/Composite with genlock input) for SE-500 and SE-800AV (Mfr #CG-100D SP; B&H #DACG100DSP)**1349.95**

CG-100-TO-GO

Featuring a high-quality rackmounted computer, pull-out monitor and pull-out keyboard, the CG-100-TO-GO's aluminum case has the same footprint as Datavideo's mobile studio units. All rackmounted components are surrounded by multiple-density foam and the hard drive is shockmounted. The CG-100 software comes pre-installed in the system.

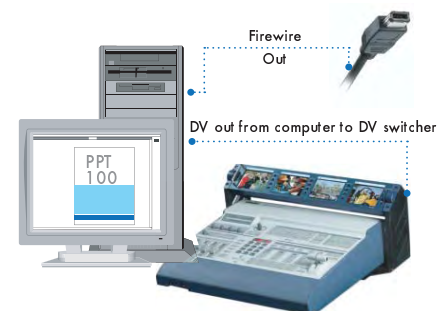


Call for Systems

PPT-100 PowerPoint to DV Conversion Software

PPT-100 is a software scan converter that converts VGA to DV video. It works with PowerPoint, Excel, etc. (It requires a fast and capable computer or the scan conversion to video will slow down). It features an easy-to-use interface and full integration to Datavideo's DAC-6 units. Resulting video is free of flickering associated with lesser scan converters. In addition, the interface is easy to use and allows you to size and position the video output. No need to worry about preserving PowerPoint features. The converter software keeps all transitions and effects present in the source files. SE-800DV inputs are ready to work with the PPT-100 but the SE-800AV must have an additional DV Input card.

PPT-100 (Mfr # PPT-100 • B&H # DAPPT100)**194.95**



MIXER ACCESSORIES

Rackmountable Components

- RP-1:** 1U rear video panel with component and composite inputs, for SE-800AV and/or SE-800DV. (Mfr # RP-1 • B&H # DARP1) **184.95**
- RP-2:** 1U rear video panel with component and composite outputs and DV input/outputs, for use with the SE-800AV and/or SE-800DV. (Mfr # RP-2 • B&H # DARP2) **360.00**
- RP-4:** 1U tally (built-in RMC-140) and balanced audio (built-in BAC-03) break-out panel, for use with SE-800AV and/or SE-800DV. (Mfr # RP-4 • B&H # DARP4) **574.95**
- RP-6:** 1U intercom plus SDI overlay I/O break-out panel, for SE-800AV, SE-800DV and/or ITC-100. (Mfr # RP-6 • B&H # DARP6) **229.95**
- RP-7:** 1U tally and multi-DV output (built-in VP-332) break-out panel, for use with SE-800DV and/or ITC-100. (Mfr # RP-7 • B&H # DARP7) **574.95**
- RP-9:** 4U lockable pull-out tray for SE-800 (Mfr # RP-9 • B&H # DARP9) **287.00**
- RP-10:** 3U lockable pull-out tray for SE-500 (Mfr # RP-10 • B&H # DARP10) **189.95**
- RP-11:** 3U Cover Panel (Mfr # RP-11 • B&H # DARP11) **47.00**
- RP-12:** 1U Cover Panel (Mfr # RP-12 • B&H # DARP12) **24.00**
- RP-14:** Tray for DVD player (Mfr # RP-14 • B&H # DARP14) **139.95**
- RP-17:** 1U ITC-100 intercom breakout panel (Mfr # RP-17 • B&H # DARP17) **199.95**
- RP-20:** 4U lockable pull-out tray for SE-1000 (Mfr # RP-20 • B&H # DARP20) **289.95**
- RP-21:** 1U HD/SD-SDI input/output break-out panel with DVI input, for use with SE-1000. (Mfr # RP-21 • B&H # DARP21) **229.00**
- RP-22:** 1U ITC-100 intercom, RS-422 and ethernet break-out panel for MS-1000 (Mfr # RP-22 • B&H # DARP22) **179.95**
- RP-23:** 2RU rackmount for DN-300 and DV deck (Mfr # RP-23 • B&H # DARP23) **239.95**

TLM-170M

17" high resolution (1440 x 900) 16:9 monitor with built-in speakers. The TLM-170M is available in a 1RU rack-mounted pull-out shelf, in a 19" rack-mount configuration, or with a tabletop stand. It features two NTSC/PAL composite (BNC) inputs, one component, S-Video and VGA input, and SDI input with loop. There are analog audio connectors for each video input. Has built-in speakers with 2W amplifier and adjustable contrast, brightness and color.

(Mfr # TLM-170M B&H # DATLM170M) **1529.95**



ITC-100

8-User Remote and Base Station Intercom

An innovative intercom system with a base station and equipment for 4-8 remote users that can use either low cost headsets or high-quality professional units. Base station delivers central call and monitoring control of the system and even includes a front-panel speaker for convenience. Users are connected to the base station via belt packs and 20-meter 5-pin XLR audio cables that may be extended up to 300 meters. The belt packs and base station can operate using low-cost cell phone headsets as well as high-quality professional unit. The system can be fed directly from the tally output of Datavideo's mixers, giving you optimal feedback on the set.



ITC-100: Intercom kit with belt packs, cables, headsets for 4 users f/SE-500/800 (DAITC100) ... **1055.00**

ITC-100KF1000: Same as above for 6 users for SE-1000 (DAITC100KF10) **1353.50**

ITC-100KF900: Same as above for 8 users for SE-900 (Mfr # ITC-100KF900) **CALL**

ITC-100SL: Replacement/expansion wired beltpack receiver for ITC-100 intercom systems. Features call and talk buttons, volume control, a tally light, and a 5-pin XLR connector for talkback, power, and a tally indicator. (Mfr # ITC-100SL • B&H # DAITC100SL) **191.00**

MP-6000 Professional DVD Recorder

A professional quality DVD+R and DVD+RW disc recorder with RS-232 control interface. The unit incorporates a selectable, high performance MPEG-2 codec compression for realtime recording of live audio/video material from composite video, analog component, DV and S-Video sources. A built-in 3D comb filter and TBC ensures the highest quality recording. The MP-6000 also features heavy-duty metal construction. Its multiple I/O interface allows direct capture and playback with digital or analog sources. The recorder also features VTR-style controls with large illuminated buttons and a backlit LCD display.



- ◆ DV, component, composite and S-Video input/output
 - ◆ Unbalanced stereo RCA plus balanced XLR input/output
 - ◆ Realtime standalone MPEG-2 player/recorder
 - ◆ DVD+R/DVD+RW disc recording
 - ◆ Variable bitrate from 1.7 to 9.1 Mbps
 - ◆ DV loop-through
 - ◆ Large illuminated control panel
 - ◆ Built-in video processor with color correction
 - ◆ Audio level control
 - ◆ RS-232 interface; GPI control
 - ◆ Rackmountable (3U)
 - ◆ Safe record feature; disc write protection
- MP-6000 DVD Recorder**
(Mfr # MP-6000 • B&H # DAMP6000) **1200.00**

DVK-100

Dual-Channel Live Chroma Keyer

The DVK-100 is a two-camera, live, entry-level, standalone, chromakey solution designed for schools, small studios, wedding videographers and small size production companies. The DVK-100 enables you to create virtual studio effect without spending large sums of money, simply by combining a single color background (blue or green is the best), two video cameras and proper lighting. NTSC/PAL compatible, the DVK-100 features proc amp adjustments, three types of keying, and three composite and S-Video inputs allowing for dual camera and separate background connectivity.



- ◆ Operates by utilizing two camera inputs with keying backgrounds (green, blue, black, white) and mixing it with the background input featuring a pre-recorded tape from a VCR or a still from capture.
- ◆ Has the ability to select from either of the two camera inputs.
- ◆ Color processor adjustments allow color saturation, brightness, contrast and tint (NTSC only) to be adjusted for both the foreground (Cam-1 / Cam-2) and background images.
- ◆ Still button lets you to grab a freeze frame from either the background or foreground inputs. This can be useful when setting up.
- ◆ Green, Blue and Luma are the three keying options available. With the Chroma Key button switched on, the user can select the keying option to suit their needs.
- ◆ Full remote capabilities via RS-232 connector
- ◆ GPI trigger interface for switching two different camera foreground sources
- ◆ 12v DC operation allows the keyer to operate in portable production situations.
- ◆ Adjustable cropping
- ◆ Adjustable edge/halo lets you modify the feathering and sensitivity around the chromakey subject.
- ◆ Key out level adjustable to reduce the shadow after keying.
- ◆ Control the CKL-100's color via GPI cable
- ◆ Two full frame TBCs enable this keyer to output a clean and synchronized signal.
- ◆ Composite and S-Video input and output
- ◆ Window adjustable to fit in different sizes of background screen
- ◆ Built-in shrink function (reduce white or black color edge on subject); spill function (adjust spill suppression); density (adjust selected color key transparency).

DVK-100 (Mfr# DVK-100 • B&H# DADVK100) **1247.00**

CKL-100

Dual Color Light Ring & Retro Reflective Cloth

The CKL-100 is an inexpensive and efficient kit for chroma-key applications. It is based around a dual-color (blue/green) ring light that can be mounted on a variety of still or video cameras with the included adapters. The light ring can switch from green to blue manually, or with the use the DVK-100 chroma-keyer. The intensity of the ring light is controlled with a variable brightness power supply.

- ◆ The ring light is accessorized with a 8x10' cloth retro-reflective screen—embedded with tiny glass beads—that is a clean backdrop for chroma-keying. This backdrop can be hung by a bar, or with hooks by using the grommets in the corners.
- ◆ Using the highly-efficient retro-reflective screen and directional LED ring, you can quickly and easily make beautiful chromakeys. With the dual-color LEDs, you can easily create blue or green backgrounds with the turn of a knob, saving you time normally used to switch backdrops. This is particularly useful in entertainment applications, where the operator has little control over the color of clothes worn by on-screen subjects.

CKL-100: Includes Dual Blue/Green LED Chromakey Ring, Variable Brightness Power Supply, Camera Adapter Rings (assortment), 2.5 x 3 meter Retro-reflective Screen, 2 x GPI cables mini-XLR cable. (Mfr # CKL-100 KIT • B&H # DACKL100KIT) **959.00**



CONVERTERS

Datavideo's format converters let you input almost any format to a DV-based nonlinear editing system. Designed for video professionals, these "take anywhere" converters are packaged in a metal housing that can take abuse and still look good, while the quality of the video they output can speak for itself.



DAC-6

DAC-6 DV-to-Analog Video Converter

The DAC-6 is a one-way DV-to-analog video converter. It outputs composite, component and S-Video (selectable) with unbalanced RCA audio. Built-in DV repeater allowing multiple units to be daisy-chained together. Use the DAC-6 for connecting DV cameras to analog switchers, such as the SE-500. With it, you can take advantage of long DV cable runs (up to 600') without quality loss. Chassis interlock allows multiple DAC-6s to be locked together and stacked or rack mounted. Includes one 5' RCA cable, one 4' S-Video cable, four 4' BNC cables, one 6' 6-pin DV cable, and 12V power supply with locking connector. (Mfr # DAC-6 • B&H # DADAC6)**249.95**

DAC-15 Media Format Converter



A computer- and software-independent, standard definition, NTSC/PAL selectable digital/analog audio/video converter. It features bi-directional support for DV, component, composite and S-Video formats, with unbalanced audio input/output. It also features black burst output, RS-422 control via compatible NLE systems and a built-in video processor with color, contrast, brightness and (NTSC only) tint controls. For convenience, it has audio level control and large illuminated selector buttons. The DAC-15 also includes SmartDV, allowing you simultaneous connection of a second DV device to your NLE system. Includes same cables as the DAC-6, plus a 6' RS-422 cable, two 6' DV cables (6-pin to 4-pin and 6-pin to 6-pin), and 12V power supply with locking connector. (Mfr # DAC-15 • B&H # DADAC15)**Call**

DAC-30/DAC-30R Media Format Converter

The DAC-30 and the DAC-30R (rackmountable) step-up from the DAC-15 with the ability to convert between SDI as well as DV, component, composite and S-Video with either balanced XLR and unbalanced RCA audio. All outputs work simultaneously for flexible application. Computer- and software-independent, they feature audio level and video color adjustments, black burst output, NTSC/PAL selection, RS-422 control and SmartDV. Front panel controls allow audio level control and VU metering of audio levels. Balanced audio signals are also converted to unbalanced signals for standard amplifier monitoring. Includes same cable package as the DAC-15.



- ◆ Encodes 4:2:2 SDI video and AES/EBU audio to DV25 stream.
- ◆ Decodes from DV25 stream to 4:2:2 (SDI) video and AES/EBU digital audio.
- ◆ Three 6-pin FireWire (IEEE1394) I/O ports
- ◆ AES/EBU digital audio I/O
- ◆ Video color processor control of brightness, color, contrast, and tint. (DV input only available for color and brightness adjustment.)
- ◆ Locked or Unlocked DV audio.
- ◆ Selectable audio sampling rate: 32 KHz (12-bit) or 48 KHz (16-bit) for both balanced and unbalanced audio input.
- ◆ Two channels balanced (XLR) and unbalanced (RCA) analog audio input and output.
- ◆ Analog audio input level calibration and audio output level meter on front panel.
- ◆ RS-422 control protocol and time code encoding for DV data stream.

DAC-30 (Mfr # DAC-30 • B&H # DADAC30)

DAC-30R (Mfr # DAC-30R • B&H # DADAC30R)

	DAC-6	DAC-15	DAC-30	DAC-30R
Smart DV	—	Yes	Yes	Yes
# of DV jacks	2	2	2	2
S-Video and composite input / output	— / Yes	Yes / Yes	Yes / Yes	Yes / Yes
Bi-directional conversion	—	Yes	Yes	Yes
Component input / output	— / Yes	Yes / Yes	Yes / Yes	Yes / Yes
Color processor control	—	Yes	Yes	Yes
Audio input level control	—	Yes	Yes	Yes
NTSC / PAL & 0/7.5 IRE selectable	Yes	Yes	Yes	Yes
Balanced audio input / output	—	Yes	Yes	Yes
Unbalanced audio input / output	Yes	Yes	Yes	Yes
Audio monitoring meters	—	Yes	Yes	Yes
Built-in TBC	—	—	Yes	Yes
SDI input and output	—	—	Yes	Yes
Color bar generator, Blackburst output	—	Yes	Yes	Yes
RS-422 interface	—	Yes	Yes	Yes
Rackmountable	—	—	—	Yes
Dimensions	4 x 6.5 x 2"	8.25 x 8.25 x 3.5"	8 x 10.3 x 5.3"	17 x 11.4 x 3.5"

V-4



4-Channel Video Mixer/Effects

Designed for portable or fixed installation use, the affordable V-4 is a powerful, easy to use four-channel video mixer capable of switching between four cameras or video tape decks during a live performance with smooth transitions and special effects. Ideal for use in nightclubs, houses of worship, theaters, schools, stages, nightclubs, conferences and other live performance applications.

For cutting-edge multimedia artists, the V-4 offers V-LINK, an exciting feature that provides for realtime performance control over digital video, for the ultimate in creative expression. V-LINK allows users to trigger clips, perform video effects and transitions in real-time when connected with the Ediol PR-80 real-time presenter. The V-4 also has MIDI in/out/through, for real-time or sequenced control of video sources with effects and transitions.

FEATURES

Video Mixer / Switcher

- ◆ Equipped with four composite (RCA) and two S-Video inputs. The V-4 offers scene transition of the four video sources with over 200 dissolve, wipes (including hard and soft edge, luminance, multi-border and sliding types), and switching. The V-4 outputs the same video source to all the three jacks (two composite, one S-Video), for simultaneous monitoring and displaying, without resorting to external distribution boxes.
- ◆ The input video sources are processed completely in the digital domain, and give professional video quality (13.5MHz, 8-bit, 4:2:2, DV quality). Ideal for use on large screens, and because the V-4 internal processing is digital there is no quality loss.

Easy Operation

V-4 is designed for its functions and operations to be clear from the front panel. Because it is simple to use its easy-to-use operation will enhance your realtime performance. Most of the V-4 functions can be selected and controlled without resorting to the manual.

Preview Function

Preview function is controlled by the source selection button, and enables users to monitor each of the input sources 1-4 or the output source before transition, to a single preview monitor, no more multiple preview monitors.

Independent 2-channel TBC / Frame Synchronizer

The input sources go through independent 2-channel TBC (Time Base Correction) circuits to correct the time code. Independent 2-channel Frame Synchronizers are also applied to the two sources at this stage. These processes enable smooth transitions and Dissolves, and ensuring stable images all the time.

2-channel Digital Effects

Independent 2-channel video effects that include a rich selection of digital effects. It also features composition effects such as PiP (Picture-in-Picture), chroma and luminance-key. Effects are recallable by a single button.

T-Bar Video Fader

Professional-use T-Bar cross fades for quick and intuitive operation. Choose to attach the fade however you like, either vertically as standard for video mixer, or horizontally as a DJ mixer fader. The fader resolution has over 100 steps and offers extremely smooth transitions. Its metal body as well as its fader is strong and durable to be used in your active performance.

On-Screen Menu

Control major functions (effect selection, MIDI input setting, etc.) from the dedicated preview screen using the convenient on-screen menu. This is separate from the output to the main outs, so you can view it anytime you want.

User Memory Function

Convenient user memory function allows you to memorize and conveniently recall the panel settings, such as effect assignment to each button. The memory is saved even while the power is off, so you can store the frequently-used setting. Maximum eight configurations.

MIDI Synchronization

Video transition/effects that can be synchronized with MIDI. The BPM (beat per minute) of transition/effects can be made to follow the beat of a music track by hitting the tap button (TAP function). The functions of V-4 can also be controlled via MIDI equipment such as a MIDI keyboard controller. If you have the optional PR-80, various visual performances become even more creative by mixing the DV-7PR's numerous video clips with the V-4's visual effects, all with realtime transitions and composition.

V-4: Four Channel Video Mixer (Mfr# V-4 • B&H# EDV4)**999.95**

V-4 Rack Kit: Includes a roll-out shelf, allowing the V-4 to be accessible when needed and flush in the rack when not in use. This unit constructed from steel and features a flat black finish. Once mounted, it occupies 4U of rack space. (Mfr# FECV4RACK • B&H# EDFECV4RACK)**219.95**

LVS-400

Professional 4-Channel Video Mixer/Live Switcher



Incredibly powerful and easy-to-use, the LVS-400 is a compact 4-channel video switcher that lets you create professional video transition and key effects for a professional video performance. Ideally suited for installations, the LVS-400 offers both BNC and S-Video inputs and outputs. It includes 17 back-lit buttons for easy control in low-light environments, a T-Bar for manual transitions, a time control for button-controlled transitions, and two effect control knobs. You can easily cut from source to source, simply by pressing the button of the input you want.

You can preview these sources on your preview monitor output before you send it to your main out. You can use two different wipes or a dissolve taking up to 4 seconds to finish a transition. You also have an output on/off option to fade to black when not in use while you prepare your next shot in your preview monitor.

FEATURES

- ◆ Mixing and switching between the 4 composite (BNC) S-Video inputs is easy. The LVS-400 can be connected with any type of video feed such as video cameras, video decks and PCs. You can switch images from live cameras rhythmically, make a presentation with images from a PC and use the LVS-400 in many different situations.
- ◆ For use in a dark venue, the LVS-400 features simple and intuitive interfaces such as large back-lit buttons and an easy-to-use video fader.
- ◆ Monitor Output lets you immediately preview 4 different images individually in the preview monitor letting you safely check your inputs without affecting the output images.
- ◆ The LVS-400 is equipped with 3 different types of composition effects: 4 Picture in Picture (inserts a small or large image into the main image) locations, Chroma Key and Luminance Key (white/black). These let you insert graphics and titling from a PC into the main image in real time. There are also 3 types of transition effects: Mix, Wipe 1, which switches from left to right and Wipe 2 that expands from the center.
- ◆ The LVS-400 lets you manipulate DV quality images with fully digital processing. The two independent frame synchronizers give you stable switching with no noise or jitter - no matter how unstable your analog video sources are.
- ◆ Equipped with BNC composite video inputs and outputs to prevent cables being accidentally pulled out.
- ◆ V-LINK connection, via MIDI, lets you sync the video with live performance of music.

LVS-400: Four Channel Video Mixer/Switcher

(Mfr # LVS-400 • B&H # EDLV5400) **1589.95**

LVS-400 Rack Kit: Includes a roll-out shelf, allowing the LVS-400 to be accessible when needed and flush in the rack when not in use. This unit constructed from steel and features a flat black finish. Once mounted, it occupies 4U of rack space. (Mfr# FEKV4RACK • B&H# EDFEKV4RACK) **219.95**

Main Features	V-4	LVS-400
S-Video Inputs	2	4
RCA Composite Inputs	4	No
BNC Composite Inputs	No	4 Case Mounted
Outputs	S-Video, 2 Composite	S-Video, 2 Composite
Transition Effects	Over 200 FX's	Mix / 4 Wipes
Picture In Picture	8 customizable	4 Set Corners
Preview Monitor Select	Yes	Yes
Preview Out	Yes	Yes
Chromakey	9 types	9 types
Back-lit input buttons	LED	Yes
T-Bar	V/H	Professional
MIDI In/out	Yes	Yes
Link Multiple Units via software	Yes	Yes
TBC with Frame Sync	2	2
Software Control	Yes	Yes
Rackmountable	Yes	Yes
Memory Locations	8	No
BMP/ Sync Video FX to Music	Auto and Manual	No
MIDI Tx/Rx Channel	Assignable	Set
Seamless switching	Presentation Mode	No
A/B Mode	Yes	Yes
Security Slot	Yes	Yes

V-8



8-Channel Video Mixer

Representing the natural expansion of the industry-standard Ediol V-4 four-channel video mixer, the next-generation V-8 incorporates the same primary feature set, yet doubles the video inputs and adds computer inputs to address the needs of the SD video market segment. The V-8 appeals to VJs, schools, houses of worship and corporate AV users who need more inputs, more effects, and regularly incorporate computer graphics and presentation software applications in their video performance and presentations.

The V-8's sleek and compact design lends itself to portable applications as well as permanent installations when size and space are considerations.

In addition to a number of new powerful video effects, the user interface incorporates fader controls for effects on each bus and master output fader. Each of the first seven input channels has BNC connectors and loop-thru functions for individual channel monitoring. The eighth input can take either composite or S-Video or computer via 15-pin D-SUB. There can be two computers connected, accessible via a selector switch which automatically detects the format accepting signals up to 1600 x 1200 eliminating the need for outboard scan converters.

FEATURES

- ◆ The V-8 has all the features of the legendary V-4, such as, ease of use, high-quality digital processing of video, numerous video effects and BPM sync with music. The next generation V-8 has new effects and expands the potential to new applications and dimensions.
- ◆ The internal processing of V-8 is 4:2:2 full-frame digital. More than 500 lines of video resolution ensure very high image quality after digital processing and mixing.
- ◆ The V-8 has a built-in scan converter, providing direct input of RGB signals (VGA - UXGA) from two rear panel D-Sub terminals. With the selector switch, you can select between two computer sources. Using the luminance key or chroma key, enables logos or text from your computer to be keyed over background video enabling the display of lyrics, bottom thirds, and announcements. Integrating computer graphics and visual applications with video has never been easier.
- ◆ All your favorite effects like colorize and negative are included, along with newly added effects like feedback, afterimage, emboss, find edge and more. Composite two images with Picture-in-Picture and Luminance or Chroma keying. Customize your transitions between the A and B bus with multiple flavors of simple mix, hard or soft wipes, and the new stretch and slide transitions.

- ◆ Faders are independently equipped for both A/B buses allowing you to create a video fade on just one bus or adjust the various video effects parameters. The master fader control is a slider bar enabling quick and intuitive operation while working on the fly.
- ◆ The V-8 can send remote control signals to Roland's RSS M-400 digital audio mixer. The motorized faders of the M-400 automatically follow the video switching of the V-8. Now you can have your audio sources follow your video sources without the need to change two mixers at once.
- ◆ The T-Bar video fader allows intuitive transitions between the A and B buses. You can change T-bar orientation from up/down to left/right according to your preference.

Controls

- ◆ Displays current BPM (Beat Per Minute). Adjust the adjacent BPM/CONTROL dial to change the current BPM value.
- ◆ Transformer button lets you instantly toggle between the A and B images without using the video fader.
- ◆ Apply fade-to-white or fade-to-black to the final output. The color is selectable with the adjacent color switch.
- ◆ Use the TAP button to control BPM sync. Tap it in time to the beat so the effects will match your music.
- ◆ Eight selectable memory settings
- ◆ Select the type of transition effects. When BPM SYNC is turned on, V-8 automatically switches between A and B on BPM timing.

Inputs and Outputs

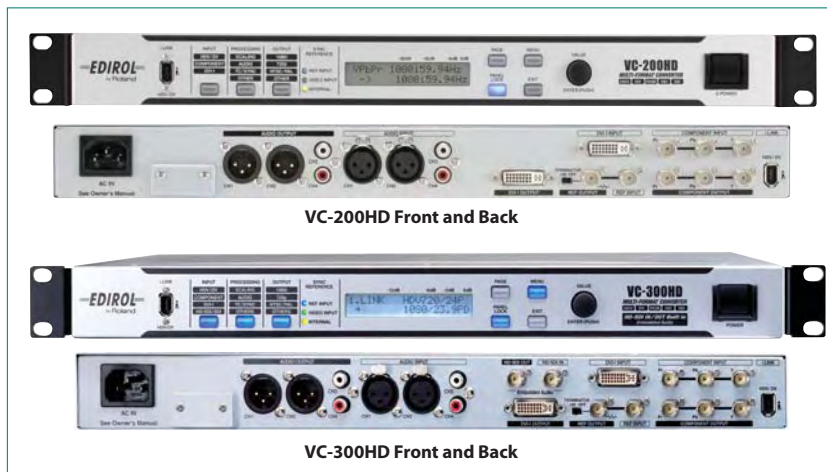
- ◆ Two composite and one S-Video output
- ◆ Preview output for selected channels
- ◆ Monitor output of Ch.8 via an SD monitor jack (RGB or S-Video).
- ◆ MIDI input/output ports for connection with external MIDI and V-LINK compatible devices.
- ◆ Two D-Sub 15-pin inputs to receive computer RGB signals. Select which one is routed to the mix using the selector switch.
- ◆ Four S-Video inputs and seven composite video inputs (BNC) with seven monitor output jacks to provide loop-thru monitoring of Channel 1-7 inputs

V-8 8-Channel Mixer (Mfr# V-8-B&H# EDV8) **1995.00**

VC-200HD • VC-300HD

Bi-directional Multi-Format Converters with Built-in Audio Delay

The VC Series converters are quite possibly the only video converter you'll ever need. Designed for all aspects of video production and the central piece of your production work flow, the VC-200HD and VC-300HD are fully bi-directional converters that convert, scale, adjust and encode/decode audio all in the same unit. Simply choose your input source— component, DVI-I, DV/HDV, or SDI/HDSDI (VC-300HD only) - set your conversion parameters and converted output is sent to all outputs simultaneously. They also support genlock as well as embedded audio that allows for delaying audio by frames or milliseconds to achieve the perfect "lip sync". The hassle-free and flexible format conversion you've been waiting for.



FEATURES

- ◆ Designed for a wide range of workflows in mid, post and live video productions, they offer flexible format conversion of digital and analog, HD and SD or compressed and uncompressed signals.
- ◆ They also accept signals and direct connections from computer RGB sources (digital RGB signals up to 1600 x 1200/60Hz and analog RGB signals up to 1024 x 768/60Hz). A wide variety of output devices like record decks, projectors or plasma/LCD displays can be directly connected.
- ◆ They use high quality A/D and D/A converters for input and output along with internal 4:4:4 10-bit signal processing. From simple format conversion to MPEG encode/decode to complex frame rate conversions, the VC Series delivers professional results.
- ◆ Compatible with wide variety of HDV cameras and VCRs, they offer a high quality processor for encoding and decoding HDV in real-time. Ediol's audio technology also makes simultaneous processing of the audio signal possible.
- ◆ Automatic detection of the input source and simultaneous output of the converted signal to multiple terminals such as SDI, IEEE 1394, DVI and analog component. This enables the recording or display of a single source to multiple recording devices or displays.
- ◆ Bi-directional conversion of different formats including 59.94p, 50i, etc. are possible with the VC Series. Multiple resolutions like 480i/p, 720p or 1080i can be input/output along with NTSC/PAL conversion.
- ◆ Input and output to and from the VC series can be genlocked with external devices. They support a host of sync signals including analog BB, Bi-level (SD) or Tri-level (HD). They also have a built-in frame synchronizer to lock signals from consumer products or computers.
- ◆ When performing HD-SDI/SDI <> HDV/DV conversion, they can pass the original time code and audio stream signals. The audio embedded in the HD-SDI or SDI signal can be separated and sent from the analog outputs. They can also embed audio from the analog inputs to the HD-SDI/SDI or HDV/DV signal.
- ◆ Audio can be precisely delayed by milliseconds or frames to compensate for the video delay caused by frame synchronizing or conversion processing. The Audio Delay function makes the perfect "lip sync" possible.
- ◆ Support 24p and 23.98p cinema frame rates to enable conversion of footage shot with a variety of cameras. Supported frame rates vary depending on input/output terminals.
- ◆ 4-Point Gamma Correction enables adjustment of bright/dark part independently. Enhances images to have a more film-like color.
- ◆ With the VC-300HD (only) you can select the SDI (HD/SD) output to be pre-processor or post-processor. This enables a monitor output or split output capability.
- ◆ Add CGMS-D (Copy Generation Management System - Digital) to the output signal. This enables limitation to copy of digital content.
- ◆ Remotely control parameter setup of the VC from external devices via RS-422A remote terminal. This can be also used for parameter data backup.
- ◆ User presets for parameters like input signal, conversion or processing can be saved to an internal memory. Up to 3 presets can be saved and enables convenient recall.

VC-200HD (Mfr # VC-200HD • B&H # EDVC200HD)CALL
VC-300HD (Mfr # VC-200HD • B&H # EDVC200HD)CALL

V-440HD

Multi-Format Video Mixer

The V-440HD offers a professional high-resolution video solution for live events, community broadcast, corporate and worship installations. With the capability to input 4 SD video sources and 4 HD or RGB computer video sources, the V-440HD enables seamless mixing and switching of multi-format video signals - 8 inputs in total. With a single unit allowing images with different aspect ratios (16:9 or 4:3), the V-440HD can also be used as an independent SD mixer or HD/RGB mixer. The output format is selectable between 1080i, 720p or RGB resolution. It offers an array of transitions, Picture-in-Picture locations via joystick as well as two Keyers (SD and HD) and tally interface. Among its many unique features the V-440HD has the ability to chain multiple units together. This enables a single HD image to be spread across multiple output displays - ideal for multiscreen performance. In addition, V-LINK allows the mixer to be controlled from any Roland/Edirol instrument via MIDI. Computer control via RS-232 is also supported.



FEATURES

- ◆ Capable of mixing HD (1080i/720p:component), SD (composite, S-Video) or RGB from computer (from VGA to SXGA). Totally seamless mixing and switching is a reality with high quality up conversion, scan conversion as well as built-in TBC/frame synchronizer.
- ◆ With the V-440HD, mixing (SD and HD) live sources is possible without any external converters. In addition, VCR and computer for background image and name/title insertion is achievable.
- ◆ With active input channel indicators, backlit channel buttons, single touch recall presets, joystick and dial control of PiP and Keyers — operation is simple and intuitive.
- ◆ Output format is selectable from various types: 1080i or 720p for HDTV and RGB for computer displays. SD inputs are up-converted but can also be output independently.
- ◆ With thru outputs and MIDI, multiple units can be cascaded to drive multiple screens (video walls). Control the V-440HD remotely via MIDI, V-LINK or RS-232C.
- ◆ Switch between NTSC and PAL modes by pressing a button while turning on power. As for test patterns, V-440HD can output a 75% color bar or 100% color bar. Other precise setups including brightness, color etc. can also be adjusted.

Inputs and Outputs

- ◆ Large backlit buttons enable easy and intuitive operation of the four (4) composite or S-Video channels. The SD section includes a program output to be used independently if so desired.
- ◆ HD/RGB section enables mixing and switching of up to 4 (BNC or 15-pin D-sub) HD video (1080i or 720p, HD component) or RGB computer inputs (from VGA to SXGA). HD/RGB section can be used as an independent mixer or take the result of the SD section as an up-converted HD/RGB source
- ◆ Separate SD VIDEO IN and HD/RGB IN buttons show both activity and type of input source; enabling quick identification of which channels are active and what type of inputs they are. In addition, these buttons can be used as shortcuts in the SD or HD/RGB input menu to setup brightness, contrast, saturation and other parameters.
- ◆ Selectable output buttons (1080i, 720p or RGB). Specific output format can also be selected via the setup menu.

Transitions

- ◆ Simple control of the position and size of the picture-in-picture window via position joystick and size dial. The LOCK button disables the joystick to secure the position of the window on the screen. SD section only offers Instant recall of favorite P-i-P patterns with simple buttons. Memorize up to five presets.
- ◆ On the HD/RGB side, you have control of the position, size, pan and zoom of the P-i-P window via position joystick and size dial. The LOCK button disables the joystick to secure the position/pan of the window on the screen. P-i-P within the HD/RGB section can be used with the keyer simultaneously.
- ◆ In the SD section, composite images on the B-Bus with Chroma Key (blue/green) or Luminance Key (black/white). Pressing button to turn key function on/off and adjust key level with the dial. Key level is shown numerically on the large LED display and soft edging is available via the menu.
- ◆ As with the SD Keyer, you can composite high resolution images on C-Bus and D-Bus with Chroma Key (blue/green) or Luminance Key (black/white)— on the HD/RGB side. Key with high resolution images and graphics from computer instead of a dedicated graphic/title generator as a lower cost alternative.

V-44SW

Rackmount Multi-Format Video Mixer



- ◆ Mix/switch SD section images on the A-Bus and B-Bus with the Video Fader. The AUTO button transits between A-B in the duration specified on the TIME dial. The type of Transition is selectable from Cut, Dissolve (MIX) or wipe (6 patterns). Custom wipe parameters can be saved. As in the SD section, a variety of transition patterns can be applied with HD/RGB sources. Use SD and HD/RGB transitions simultaneously.

Additional Features

- ◆ Output fade button automatically fades out the master output as set on the TIME dial (0 to 4 seconds). Adjust the fade color using the setup menu.
- ◆ Memorize and save up to 15 setups to allow instant, single button recall of any mixer configuration. Menu function allows copying and exchanging presets.
- ◆ Recall the default value of each and every parameter. Convenient for instant recall of input parameter, color settings etc.
- ◆ V-440HD is equipped with MIDI and REMOTE terminals for controlling from external devices. Video switching, synchronized with music or control from computer software is available with these terminals.
- ◆ Connecting multiple V-440HDs via MIDI allows easy setup of multiscreen configurations. The multiple screens are treated as one unified surface with P-i-P and wipes moving across the screens.
- ◆ Control the V-440HD from external, V-LINK enabled musical instruments.
- ◆ Using the V-440HD in combination with an SD video mixer lets you compose video using up to six different effects simultaneously.
- ◆ The V-440HD features an up-converter that enables up-conversion of SD video to HD and RGB with superior image quality.
- ◆ Two TALLY outputs one for HD/RGB, one for SD that allows selected channel indicators to light when selected.
- ◆ Native support for 1366x768 (WXGA) resolution enables support for mid-sized LCD panels and many projectors or plasmas.
- ◆ Aspect ratio for a P-i-P image (HD/RGB) can be set regardless of the aspect ratio of the source image. Master output fade function can optionally effect the SD output as well.

The V-44SW brings the award-winning multi-format technology of the V-440HD Mixer to a compact, installation friendly, 2U rack-mount format. Suitable for installations where frequent adjustments to video mix parameters is not required, the V-44SW allows for seamless switching between SD (standard definition) RGB (PC/Mac computer signals) and HD (high definition) signals. Applications include banquets, concerts, sports venues, churches, boardrooms, trade shows and corporate presentations.

- ◆ Like the V-440HD, the V-44SW supports multi-format signals like HD (1080i/720p component), SD (S-Video/Composite) and RGB from PC/Mac (from VGA to SXGA).
- ◆ Output format is selectable from 1080i or 720p for HDTV and RGB for computer displays, plasmas and projectors. SD inputs are up-converted for HD or RGB output.
- ◆ Features a selection of screen transition effects, including six types of wipe effects as well as cut and mix effects. You can have such screen transition effects be applied simply by selecting a button.
- ◆ The V-44SW includes three types of composite effects (PiP, Luminance Key, and Chroma Key). You can, for example, use Chroma Key to take text appearing on your computer screen and display it as a title.
- ◆ Using a computer as a source for high resolution images and graphics and sending them through the V-44SW's Key and P-i-P effects is an effective, low-cost alternative to higher priced dedicated graphics and CGs. The P-i-P and Key effects can be used simultaneously.
- ◆ V-44SW works as slave unit of any V-440HD. This enables multi-screen/video wall setups in compact spaces.
- ◆ Most of the operations can be completed simply by pressing the input select buttons. This enables users with little knowledge or skill to control the unit.
- ◆ V-44SW can be remote controlled from various external devices via MIDI or RS-232 interface. This will enable the use of customized user interfaces to match specific applications resulting in even more intuitive control. You can also back up the V-44SW's settings to computers and other devices.
- ◆ A key feature of the V-44SW is its "flip-flop" type preview function. You can check the source image on a preview monitor prior to sending the signal to the Program output. Simply press the TAKE button on the front panel and the selected source signal being previewed is sent to Program output.
- ◆ The V-44SW is equipped with a Panel Preset function. You can instantly recall the desired configuration of input channel selection, PiP settings and Key setup, etc. directly from the front panel buttons. Enables instant and speedy setup.
- ◆ You can have black (or white) screens output in the final output video during breaks and at the ends of videos.

V-440 HD Multi-Format Video Mixer (Mfr # V-440HD • B&H # EDV440HD).....	CALL
V-44SW Multi-Format Video Mixer (Mfr# V-44SW • B&H# EDV44SW).....	8769.95

HX-1 • HX-2

HD Video Switchers

Rugged, portable, and designed to excel in today's most demanding high-definition production environments, the HX-1 and HX-2 are HD video switchers that not only meet the highest broadcast standards, but also provide an array of simple-to-operate features. Whether you're conducting a live outside broadcast or shooting inside a production studio, the HX-1 Portable HD Video Switcher and HX-2 HD/SD Video Switcher enable you to switch seamlessly between video sources and blend high-quality digital content on the fly. Designed from the inside out to excel in today's demanding high-definition production environment, the switchers are easy to set up and operate, feature full 10-bit internal processing, generate superior-quality video effects, and meet the highest broadcast standards.



HX-1

HX-1 Portable HD Video Switcher

Easy to set up and operate, the HX-1 features full 10-bit internal processing, generates superior-quality video effects, and meets the highest broadcast standards. It features four HD-SDI inputs, six HD-SDI outputs, and eight wipe patterns. With its rugged, portable form factor, the HX-1 is ideal for location shoots—such as news, sports, live music events and conferences—that require up to four sources, including HD cameras, VCRs and digital disk recorders.

HX-2 HD/SD Video Switcher

With 10-bit internal processing, the HX-2 generates video effects that meet the highest broadcast standards. Feature packed, the HX-2 includes eight HD-SDI or SD-SDI input and outputs plus two external key inputs for key-channel sources, character generators, or logo inserters—all in a compact footprint. It features eight wipe patterns, internal chroma key, 2D DVE, and 1H video delay. With its intuitive layout, the HX-2 allows you to get up and running instantly.



HX-2

FEATURES

- ◆ They each feature eight wipe patterns: vertical, horizontal, top left, top right, bottom left, bottom right, center square and center circle
- ◆ Wipe controls include:
 - Aspect ratio (center circle and center square wipes only)
 - Border (adjustable color and size)
 - Position (center circle and center square wipes only)
 - Adjustable soft edge
 - Take-Bar functions (limit, normal and reverse)
- ◆ Housed in a rugged metal enclosure with high-quality back-lit channel buttons, LCD display, and machined aluminum fader bar with extremely smooth operation.
- ◆ Video delay (1H), external reference signal integration (active loop-through), and frame synchronization on all inputs.
- ◆ Intuitive layout for easy operation.

Key Features	HX-1	HX-2
Inputs		
HD-SDI only (each with its own active loop-through output)	4	—
HD-SDI or SD-SDI	—	8
External SD/HD-SDI Key Inputs (DSK and Fill)	—	2
Outputs		
HD-SDI only (x2 Line/Program, x2 Preview, x2 Video Effects)	6	—
HD-SDI or SD-SDI (x2 Line/Program, Preview, Video Effects, x2 Utility, Key Channel)	—	7
Frame Synchronizer (all inputs)	Yes	—
Key and 2D DVE Functionality		
Chroma Key (slice, gain, trim, fade, and hue adjustment and cursor selection control)	—	Yes
DSK Key (matt, edge, slice, gain, and fade control)	—	Yes
Mosaic (adjustable)	—	Yes
Picture Squeeze and Slide (wipes)	—	Yes

HX-1 HD Video Switcher (Mfr # ASYF-1215-01 • B&H # FOHX1) **6459.95**

HX-2 HD Video Switcher (Mfr # ASYF-1219-01 • B&H # FOHX2) **15,299.95**

FOCUS ENHANCEMENTS

MCSDI-1

Portable HD/SD-SDI Media Converter

Small, flexible, and affordable, the MCSDI-1 converts HD analog, SD analog, or digital HDMI input signals to HD-SDI or SD-SDI output—with ease. A powerful converter in a portable package, the MCSDI-1 enables you to convert the output from any camera—including prosumer-level cameras—to professional-grade HD-SDI or SD-SDI for outstanding, broadcast-quality video.



- ◆ Able to convert SD, HD, or HDMI inputs to SD-SDI or HD-SDI, offering multiple conversion options in one, cost-effective unit.
- ◆ With its small footprint, the MCSDI-1 is extremely portable. Can be mounted on a camera, and powered by a 7.2V DC camera battery.
- ◆ Accommodates HD analog, SD analog, and HDMI inputs.
- ◆ The MCSDI-1 can accommodate two channels of audio input and embed them both in the SDI signal, requiring only one SDI cable for both video and audio transmission.
- ◆ With built-in auto sensing, no signal-setting is required for video inputs, making it very simple to use.
- ◆ Prosumer-level HD cameras (with analog or HDMI output) can now be used in live studio shoots when combined with the MCSDI-1.

MCSDI-1 (Mfr # ASYF126701LS • B&H # FOMCSDI1) **649.95**

MEDIA CONVERTER MC-2E

DV/SDI/Analog Converter



MC-2E can be easily added to an existing AV rack. Designed for broadcast and professional postproduction, the MC-2E makes advanced, bidirectional video conversion affordable, reliable, and easy. With a variety of inputs and outputs, the MC-2E enables you to convert DV to analog video, analog video to DV, and analog or DV to SDI. No matter what your conversion needs are—DV, composite, S-Video, component YUV or SDI—the MediaConverter MC-2E has you covered.

Focus Enhancements' most advanced video and audio signal transcoder, the MC-2E lets you achieve professional, high-quality bi-directional DV/SDI-to-analog video conversion. Rackmount ready, the

- ◆ The perfect complement to popular editing systems such as Avid Xpress DV, Pinnacle Liquid, Apple Final Cut Pro, and Adobe Premiere, the MediaConverter MC-2E enables you to work with footage from any source—including video recorded on older tape formats—by converting it to digital video for nonlinear editing. Once your program is edited, you can transfer it to tape for archiving.
- ◆ Also includes a full-featured audio signal converter with connections for unbalanced stereo, balanced stereo, AES/EBU, and DV/SDI embedded audio. The audio input can be selected independently from the video signal and all audio outputs are available simultaneously, enabling the MediaConverter MC-2E to embed or de-embed audio.
- ◆ The MC-2E is controlled by a backlit LCD display screen and three buttons on the frontside of the unit. The display will provide a selectable menu which will allow you to filter through a wide variety of available sources to meet your conversion needs.
- ◆ Includes full-frame time base correction and Genlock, making it perfect for broadcast applications.
- ◆ Featuring bidirectional D-VITC to DV TC conversion, the MC-2E ensures that users of nonlinear editing systems can easily maintain the same timecode values as tape. The MC-2E includes an RS-422 interface that enables smooth conversion of RS-422 LTC to DV TC and an RS-232 interface for firmware updates and system settings. Video levels, audio levels, and color phase (HUE) can be adjusted by the user for maximum control over picture and sound.
- ◆ Video inputs/outputs include DV (IEEE1394) 6-pin interface, SDI with embedded audio, analog component (BNC x3), composite and S-Video. Also has a blackburst reference I/O. Audio inputs/outputs include analog unbalanced stereo (RCA), XLR- balanced stereo and digital AES/EBU XLR-balanced stereo.

MC-2E (Mfr # ASYF-1005-01 • B&H # FOMC2EMC) **1814.95**

INDIGO

All-in-One AV Mixer

Indigo is a new class of high-quality, multi-format audio/video mixer. Combining features normally found in video production switchers, AV presentation mixers, and audio mixers, it is a powerful, cost-effective, and easy-to-operate platform for live-presentation environments. The Indigo platform offers a complete feature set for controlling multiple analog or digital video and audio sources. With a high-resolution card installed, the mixer can simultaneously process multiple sources: 12 standard-definition (SD) sources, one scaled from SD to high definition (HD), and two selected from HD video or computer inputs. It also upconverts to HD and downconverts to SD—and even simulcasts live SD and HD output. The Indigo platform also manages the mixing and timing of audio sources, ranging from unbalanced analog to AES/EBU signals. And it seamlessly combines live, high-resolution computer-based media, and presentation content with real-time video and audio materials.



Touchscreen menu system provides easy and instant access to all settings

Joystick allows easy size and position control for keys and picture-in-picture function.

Mix/effect buttons and layout provide broadcast-style operation and performance.

Lever arm provides user-controlled transitions

Audio faders support user control or automatic audio follow-video applications.

FEATURES

- ◆ Live seamless switching of video, audio and computer sources
- ◆ Mix digital and analog sources
- ◆ Upconvert/downconvert multiple video channels between HD and SD (with optional high-resolution card)
- ◆ SD/HD simulcast output (with optional high-resolution card)
- ◆ Pre-programmable video layouts with keys for picture-in-picture and other effects
- ◆ Digital effects with 2D and 3D transformations, including page turns, ripples, and swirls
- ◆ Luminance and chroma keys
- ◆ Integrated control of Grass Valley Turbo intelligent digital disk recorder (iDDR) and other devices
- ◆ Stereo analog and AES/EBU audio
- ◆ SD-SDI audio de-embedding and re-embedding
- ◆ Four-band parametric equalizer and motor-driven audio faders
- ◆ Simple audio-follow-video mode
- ◆ Intelligent audio-delay management for live production lip sync

Fits Any Skill Level

Indigo is simple enough for anyone to use. While providing full production-switcher capabilities, its menu-driven, touch-screen interface can access powerful presets to get a new operator up and running in minutes. Users can also customize these presets and save them for recall.

Video Processing & Effects

Indigo features numerous 2D and 3D transition effects that you can modify and save, along with all other layout data, into its E-MEM preset storage banks. The Indigo mixer features more than 100 2D and 3D modifiable transition effects. It also supports two high-resolution and two SD luminance, chroma, or pattern keys. Combining these features with the basic time-line sequencing in the mixer's E-MEM preset storage banks provides a limitless array of custom effects.

Advanced Audio Mixing

Supporting eight stereo audio input channels from a selection of digital and balanced or unbalanced analog sources, each Indigo audio channel has a four-band parametric equalizer and may be controlled by a motor-driven fader. The mixer also provides phantom power for up to four microphones. And it can operate in audio-follow-video mode, automatically fading audio up or down when its associated video source is taken to program. The mixer also features delay tracking that delays audio automatically to coincide with any delay of video through the switcher, as well as a user-defined output delay. These features ensure lip synchronization in live productions.

Automated Playback, Device Control

Indigo's integration of machine control automates functions through memory presets that have traditionally required a dedicated operator. You can control external devices via RS-422 or Ethernet connections using GPI, BVW, or AMP protocols. Particularly powerful is Indigo's ability to control the Turbo iDDR. Menus on the mixer's touch screen emulate those featured within the iDDR's control panel to streamline setup, recording, clip management, and playback directly from the iDDR.

INDIGO

Specifications

Video-Standard Support:

- NTSC/PAL: 50/59.94 Hz
- HD-SDI: SMPTE 292M (720p or 1080i) 8-bit YUV
- SD-SDI: SMPTE 272M (525 lines/625 lines) 10-bit YUV
- Composite: (525 lines/625 lines) 10-bit YUV
- DVI-I: 640x480 up to 1280x1024 @ 50/60/75 Hz
1600x1200 up to 1920x1080p @ 50/60 Hz

SD Video Input:

Processes up to 12 external sources selected from the following input connections:

- 6 SD-SDI (75Ω BNC)
- 6 SD-SDI or composite (shared 75Ω BNC)
- 4 S-Video (4-pin mini DIN)
- 2 DV25 FireWire (6-pin IEEE 1394)
- 2 internal digital sources downsampled from hi-res
- Embedded audio: passed and user-defined de-embedding from SD-SDI
- Ancillary data: blanked
- 300m max. cable length using Belden 1694A type cable

High-Resolution Video Input (with high resolution option):

Processes up to two external sources and one internal source selected from the following input connections:

- 2 HD-SDI (75Ω BNC)
- 2 DVI-I
- Up to 3 internal digital source upscaled from SD
- Embedded audio: blanked
- Ancillary data: blanked
- Max. cable length: 100m using Belden 1694A type cable (HD-SDI) or 15m using DVI-I single link type cable

SD Video Output:

All output connections are simultaneously active

- PGM:
 - 2 composite (75Ω BNC)
 - 1 S-Video (4-pin mini DIN)
 - 2 SD-SDI (75Ω BNC)
- PVW:
 - 1 composite (75Ω BNC)
 - 1 S-Video (4-pin mini DIN)
 - 1 SD-SDI (75Ω BNC)

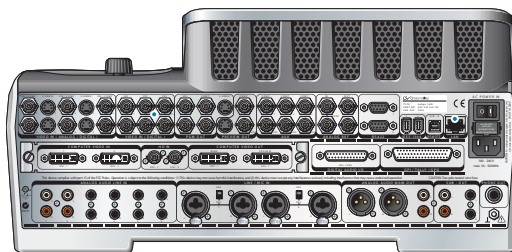
AUX:

Aux outputs are pairs of SD-SDI and composite connectors

- 3 composite (75Ω BNC)
- 3 SD-SDI (75Ω BNC)

High In Value, Yet Affordable

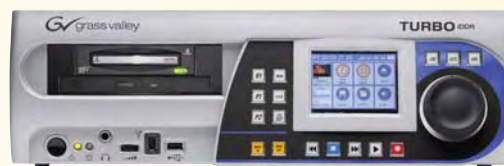
Indigo offers a number of economic benefits. Its competitive price, expansive functionality, and feature set ensure that you will no longer need separate—and often more expensive—production switchers and audio-mixing devices to get the job done. Coupled with the platform's ease-of-use features, the high-function design minimizes the number of operators necessary to deliver powerful, highly professional presentations for corporate, educational, concert and sporting event, convention center, house of worship, and other productions.



TURBO • TURBO-R

Intelligent Digital Disk Recorders (iDDR)

Turbo iDDR is a cost-effective, compact digital recording, editing, and playback device. Designed for immediate productivity, the Turbo system fits right into existing environments, letting you load content as video or files from removable media. Its front-panel transport controls look very much like those of traditional VCRs. And its output channels support standard- or high-definition (SD or HD) content.



Otherwise the same, Turbo-R integrates REV removable-disk technology. REV disks are easily swapped out and offer unlimited rewritability. The disks can fulfill many different types of media needs with the ability to store over 2 hours of video. This added benefit makes it much easier to transfer data from external devices to the Turbo system.

Other than the same, Turbo-R integrates REV removable-disk technology. REV disks are easily swapped out and offer unlimited rewritability. The disks can fulfill many different types of media needs with the ability to store over 2 hours of video. This added benefit makes it much easier to transfer data from external devices to the Turbo system.

- ◆ Featuring extensive rear-panel audio/video connectivity, you can record from a camera or VCR through via FireWire (IEEE1394) connection. The system accepts files via data transfer over standard 1000Base-T (Gigabit Ethernet) networks. It also accepts media from other applications, including AVI, HDV, MPEG-2, QuickTime, Windows Media, and WMV HD files.
- ◆ Using the Turbo iDDR system, you can exchange content at high speeds over a network with desktop applications. Furthermore, Turbo can be controlled by the Indigo AV mixer.
- ◆ With a software application suite for managing and selecting media clips, clip editing and trimming, and playout (including playlist creation), the Turbo iDDR is a complete AV center. It offers two playout channels for independent editing and previewing, or for delivering content to two different display systems simultaneously. And either or both can be played out with HD and SD content on the same playlist.
- ◆ Designed to integrate into a variety of applications and facilities, you can drive a production directly from Turbo or via external automation systems such as those from AMX and Crestron.
- ◆ Storage (enterprise-class SATA drive technology) capability on Turbo runs 10 to 40 hours depending on bit-rate. Turbo-R allows 2 hours of 25Mb/s SD or HD video on REV disk.

Turbo (Mfr # TURBO-1 • B&H # GRT1)**7999.95** **Turbo** (Mfr # TURBO-R • B&H # GRTR)**9499.95**

TRICASTER

Portable Live Production System



With TriCaster, you can seamlessly mix live input from video cameras along with stored video clips, overlaid graphics, still images and PowerPoint presentations. Simultaneously send the broadcast-quality output to a video recorder, a projector and the Internet. TriCaster can handle as many as three live cameras, and it doesn't require any scan converters.

All this in a 10 lb. box that can fit in a backpack. (You will need a small LCD screen though). There's also an optional video mixer board (TriCaster VM) for those who prefer the solid feel of a real T-bar, backlit source buttons and rotary transition /overlay knobs. Otherwise, everything is controlled onscreen via a standard computer keyboard.

TriCaster is ideal for small corporations who want to jazz up their product launches and shareholder meetings with professional-grade switching among live cameras, overlaid titles and PowerPoint animations. Churches could integrate live cameras, onscreen lyrics and text passages onto a large projection screen. They could also archive the mix for distribution to shut-in members. Schools could use the TriCaster to teach the principles of live video mixing. They could also place it on an AV cart and roll it from classroom to classroom so that every class could be streamed over the Web.

FEATURES

Live Camera

- ◆ Instantly incorporate live video, taking composite (RCA connectors) or S-Video from the camera and plugging straight into TriCaster's convenient front connection panel.
- ◆ As soon as you plug in a camera, its video appears on-screen and is ready for use in your presentation. Easily connect up to three cameras for quick and compelling digital video that can then be sent to tape, to a projector or to the Internet. Live events become much easier and faster to set up thanks to TriCaster. Advanced controls are available.

Virtual VCR

- ◆ Animations and edited videos greatly enhance your live production, illuminating your points with moving pictures easily worth much more than a thousand words. TriCaster offers total freedom to record, edit and playback with its Virtual VCR.
- ◆ Even easier to use than your VCR at home, just drop in a video clip and when you're ready to make it live, select and play it instantly. With a big, friendly button just for the Virtual VCR on the video mixer panel, cutting between clips and live cameras is a snap.

iVGA

- ◆ This exclusive NewTek technology is like nothing you've ever used before. Each computer runs a small application and is seen by TriCaster across the local area network. The basic TriCaster supports one input.
- ◆ The TriCaster producer can then choose among any of those computers, bringing it into the presentation in real time. This goes way beyond sharing graphics, though. iVGA is capable of bringing in full-screen images, animations and even video playing on the outlying computer with incredible clarity and smoothness.

The process of creating live network style television can be very costly, requires massive amounts of expensive equipment and a large crew of people to make it work, TriCaster changes all that. In one small, lightweight, portable system (small enough to fit in a backpack) you have all the tools, including live virtual sets on most models, required to create, broadcast, web stream and project your show.

There is a reason TriCaster is the standard in "portable live production" for major players like Fox Sports, MTV, VH-1, NBA D-League and the NHL, it is simply the most complete, reliable and efficient system available for live production and web streaming. The small footprint makes it possible to broadcast from literally anywhere and only requires one person to make it work.

No matter where your live broadcast plans take you, there is a TriCaster system perfect for you.

The possibilities are exciting:

A co-worker breezes into the meeting with the latest ad storyboards or initial product videos. No longer do you have to halt the meeting for him to connect his system to the projector; just plug into the room's network connection, and with his launch of iVGA, he can drive the video, while you add this to the presentation.

Financial information can change right before your eyes. One of the presenters displays a ticker page on his computer, which can be viewed by entire group with a single click.

TRICASTER

Picture Player

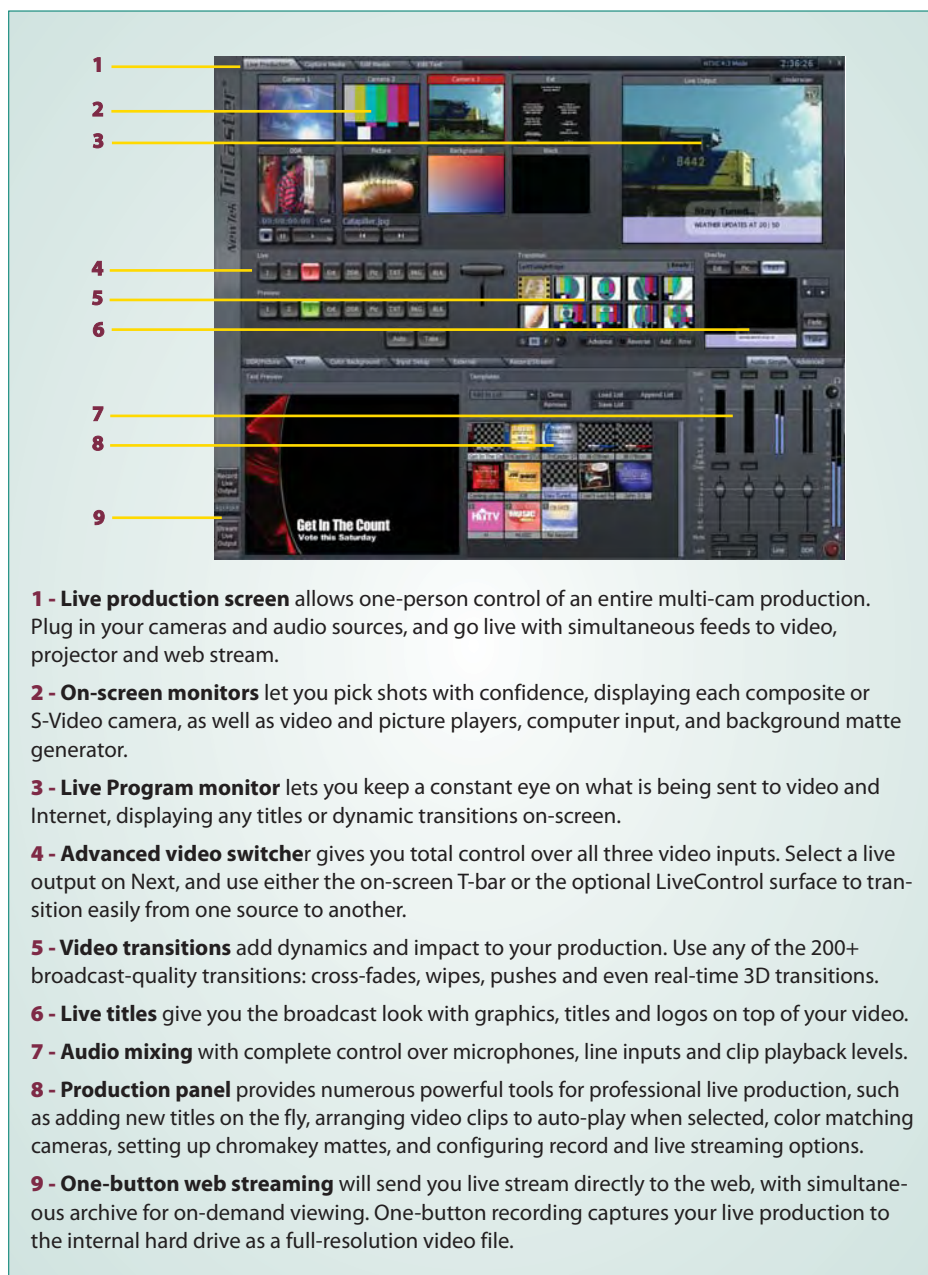
Use any picture on your computer in your live presentation. TriCaster's Picture Player is one of several inputs to the video mixer, and can display images in full detail, with the ability to set specific playback times for each image in the list. Customers will better understand each point with supporting graphs and data.

Audio Mixer

- ◆ Running a presentation with live speakers and recorded footage requires flexibility and full control of audio, and TriCaster has simplified this to a few controls.
- ◆ Each source (mic1, mic2, line, and VCR) has its own audio level controls and a single output volume control. Verify the quality of your signal with on-board audio meters as well as with the integrated headphone.
- ◆ Each input has Balance, EQ and Solo output. The microphone inputs also have an automated Talk Over button, to quickly reduce the volume of all other inputs, giving that microphone level priority. TriCaster PRO adds balanced audio and phantom power.
- ◆ Bring in music or audio files through the capture panel or across the network, and bring them into your project without importing or converting anything.
- ◆ TriCaster accepts .wav .MP3 and DV audio for immediate playback with control over left and right channels, a master audio slider and even a visual stereo positioner.

Overlay

- ◆ You can't tell the players without a program, and the fastest way to identify members and messages is with overlay titles. Create key points and identify all participants on-screen. With simple click-and-replace text update, these pages can be easily created. Live overlays support text, picture and animated titles with alpha channel to provide depth and dimension to your graphics
- ◆ Browse through your styles of lower or full-screen graphics, quickly replacing the stand-in text with your own. Then, access any page with a click, and smoothly fade titles and text in and out. Create as many pages as you need from the various pre-loaded styles. Custom styles can be created using any graphics program and a text editor.



1 - Live production screen allows one-person control of an entire multi-cam production. Plug in your cameras and audio sources, and go live with simultaneous feeds to video, projector and web stream.

2 - On-screen monitors let you pick shots with confidence, displaying each composite or S-Video camera, as well as video and picture players, computer input, and background matte generator.

3 - Live Program monitor lets you keep a constant eye on what is being sent to video and Internet, displaying any titles or dynamic transitions on-screen.

4 - Advanced video switcher gives you total control over all three video inputs. Select a live output on Next, and use either the on-screen T-bar or the optional LiveControl surface to transition easily from one source to another.

5 - Video transitions add dynamics and impact to your production. Use any of the 200+ broadcast-quality transitions: cross-fades, wipes, pushes and even real-time 3D transitions.

6 - Live titles give you the broadcast look with graphics, titles and logos on top of your video.

7 - Audio mixing with complete control over microphones, line inputs and clip playback levels.

8 - Production panel provides numerous powerful tools for professional live production, such as adding new titles on the fly, arranging video clips to auto-play when selected, color matching cameras, setting up chromakey mattes, and configuring record and live streaming options.

9 - One-button web streaming will send you live stream directly to the web, with simultaneous archive for on-demand viewing. One-button recording captures your live production to the internal hard drive as a full-resolution video file.

Video Effects

Hundreds of professional transitions: wipes, peels, 3D page curls and much more can be dropped into the Transitions folder and easily arranged. All transitions serve dual duty, in the switcher and also in the real-time editor. You can choose which order the transitions will be recalled, and auto-advance to the next in line. Using TriCaster VM™ you can use the transition selector to quickly dial in the effect you'd like.

Keyer

Broadcasters have known for years the impact of combining live images with background video and graphics, and do so by replacing an onscreen color with video, or keying. You see it every night in TV weathercasts. Key in real-time with the switcher or key it later in the editor. Let TriCaster help bring along the sophistication of a television studio to your next production.

TRICASTER

Capture Media

Connect a camera or deck to TriCaster, and use the streamlined capture functions begin ingesting clips for editing or live playback. Simple Start, Stop and Pause buttons make clip capture exceedingly simple.

Storyboard & Timeline

- ◆ TriCaster's Storyboard editor is simple enough to master in seconds, as all pictures and videos sequence one after another. This is the best place to start editing, as you can quickly re-arrange and then play at once to see the changes.
- ◆ The power of the Timeline is how it can create picture-in-picture effects, add titles and quickly create multiple video and graphics layers. Easily add transitions, and your project is now ready to be used in several ways; output as a digital video file, send to the projector or stream to the Internet. While the Storyboard is fast and simple, this is still a very powerful editor, capable of any special effect you'll need: Multiple video layers, animated titles, slow motion, panning, 3D rotation, soft edges, plus hundreds of transitions, so you have the all the tools you need to create or modify compelling messages on-site.

Output

TriCaster brings a flexibility and ease to presentations with three simultaneous outputs: Projector, video and Internet. With the included projector support, plug into the DVI digital output, and project in high resolution. Mixing video sources with technical data, live web pages and PowerPoint™ is easier than ever before, since video is scaled up to your projector's resolution. Don't worry about connections and extra gear; TriCaster brings everything you'll need for a professional production.

Streaming Encoder/Server

No more limiting your audience to the people in the room. Corporations are quietly discovering the competitive advantage that Internet streaming provides. Further, live streaming is more beneficial than on-demand, as viewers report stronger positive impressions when watching a live event. TriCaster helps your key accounts, hot new leads, vendors and many others join in on important meetings or events.

LiveSet



Integrated into TriCaster PRO, TriCaster STUDIO and TriCaster BROADCAST systems, LiveSet allows you to achieve the look of a sophisticated studio setting, virtually, within a very small studio space and without the need for external equipment. With lights, a simple camera set-up, and a green or blue backdrop your on-camera talent can be placed in any one of the LiveSet virtual sets.

Increase the professionalism of you facility with the addition of network-quality studio sets, without a big investment in software, hardware, construction of set pieces, expensive lighting, on-set playback monitors, production crew, or a massive space to accommodate the cameras and lighting rigs—saving you tens of thousands of dollars or more.

LiveSet includes a background and foreground image designed to be viewed from three different angles. For every camera connected to the system, LiveSet allows you to change each camera shot virtually, transition from close-up, to medium, to medium-wide to wide angle shots in real time, without moving the camera or changing the set up in any way. Accomplish everything live with complete realism, including reflections, glass refraction, shadows and more. LiveSet also provides the ability to further customize your production by adding video, still imagery or graphics to monitors featured in the LiveSet virtual sets.

LiveSet system comes with multiple sets that take you from morning to evening in a news desk style environment and to the sports field with a stand up virtual set that may be customized with the sporting event of your choice.

Simply position your on camera spokesperson in front of a green or blue backdrop, add lights and connect cameras to your TriCaster PRO, STUDIO or BROADCAST systems. Next, you pick the virtual set of your choice, the camera angles and the shots from wide angle to midway to close-up. Once you begin your video presentation you can transition from one camera shot to another using cuts, fades or any one of the hundreds of video effects available. Your on-camera talent is seamlessly integrated into the LiveSet using proprietary LiveMatte technology. The talent will be able to interact with the surrounding virtual environment including virtual monitors displaying the video or imagery of your choice.

Additional Features

- ◆ Full support for 4:3 and 16:9 broadcasting
- ◆ 10 hours of video storage for video playback during live presentations and for archiving your live presentations.
- ◆ Edit Media is optimized with the SpeedEDIT 1.5 engine providing the ability to edit HD footage, along with render support for Mac, iPod, MPEG-4, Flash and more.
- ◆ File format support for live and post production includes MPEG and QuickTime for greater versatility in program delivery.
- ◆ Integrated character generator provides the ability for you to create your own custom titles, motion graphics, scrolls and crawls.
- ◆ In-field system recovery provides on-location confidence at any production.

TRICASTER

TriCaster PRO

TriCaster PRO provides a complete portable studio for the professional producer with the ability to mix component, composite and S-Video camera sources. Produce your show with network style virtual sets, balanced audio, an integrated character generator, broad file format support, increased storage and much more. Broadcasters, sports teams, corporations, schools, media ministries and many others have come to rely on the award-winning TriCaster PRO for portable live production and live web streaming.

Headphones not included



- ◆ LiveSet technology that makes it possible for you to turn a very small space into a larger than life network style studio.
- ◆ LiveMatte technology makes it easy to create clean chroma keys for your talent to be displayed in the live virtual sets.
- ◆ Three video inputs, accepting component, composite (BNC) and S-Video signals. Also provides component output.
- ◆ Over 20 hours of video storage for video playback during live presentations and for archiving your live presentations.
- ◆ With iVGA up to three Mac or PC's on the same network with your TriCaster can be added as inputs for your live production.

TriCaster STUDIO

TriCaster STUDIO is a live production workhorse delivering the ability to live switch between six cameras with real-time chroma keying, live titling, audio mixing, live video streaming and more. Broadcasters, major-league sports teams, corporations, schools and churches have come to rely on it for portable live production and live web streaming with photo-real live virtual sets. TriCaster STUDIO you have all of the power of a broadcast control room in one simple to use broadcast appliance. LiveSet virtual set technology allows you to achieve the look of a sophisticated studio setting within a very small studio space without the need for external equipment.



- ◆ Quickly connect and mix up to 6 component, composite or S-Video cameras to provide full camera coverage of any venue
- ◆ Dual virtual VCRs with alpha channel support
- ◆ Both virtual VCR's may be assigned to downstream key for scrolls, crawls and motion lower-thirds.
- ◆ Ability to lock any title or graphic to any input
- ◆ Complete flexibility with the choice to operate in either six-or three-camera mode giving you the ability to switch six cameras or three cameras and use three virtual ISO monitors.
- ◆ Four balanced XLR or phone jack audio connectors for professional audio mixing.
- ◆ VC-1 streaming support
- ◆ Simultaneously record full-screen .avi while archiving the web stream.
- ◆ Easily cut to video using the on-board VCRs at any time without needing another person to cue them up.

TriCaster BROADCAST

TriCaster BROADCAST with SDI support delivers enhanced efficiency and reliability. With audio embedded with the video signal you can depend on a fast, professional setup. Whether you rely on a team or operate on your own, TriCaster BROADCAST makes it possible for you to deliver your network quality program to video, projector and web stream with a full range of professional tools including six camera inputs, live virtual sets, double box effects and much more.



- ◆ Quickly connect and mix six SDI equipped cameras to provide full camera coverage of any venue.
- ◆ Total flexibility in six-or three-camera mode. Switch six cameras with shared preview or three cameras with a dedicated preview for each.
- ◆ Dual virtual VCRs that can be played on cue for perfect cut-ins every time. Either virtual VCR may be used to overlay scrolls, crawls and motion titles.
- ◆ Auto-detects and compensates for aspect on playback.
- ◆ Lock titles and graphics upstream to any input
- ◆ Multi-format live clip playback

TRICASTER

Main Features	TriCaster	TriCaster PRO	TriCaster STUDIO	TriCaster BROADCAST
Video Inputs	3 Y/C or composite	3 Component, Y/C or composite	6 component, Y/C or composite 6	SDI, component, Y/C or composite
Video Outputs	Y/C + Composite	Component + Y/C + composite	Component + Y/C + composite	SDI + component, Y/C over BNC + composite
Virtual Set Support	No	Yes	Yes	Yes
Integrated Character Generator	Yes	Yes	Yes	Yes
On-screen ISO Preview Monitors	Yes	Yes	3-cam ISO or 6-cam shared preview	3-cam ISO or 6-cam shared preview
16:9 Support and Streaming	Yes	Yes	Yes	Yes
Projection Resolutions	XGA, DVI and analog outputs	XGA, SXGA, QSXGA and higher; DVI and analog outputs	XGA, SXGA, QSXGA and higher; DVI and analog outputs	XGA, SXGA, QSXGA and higher; DVI and analog outputs
iVGA Network Import	1 input	3 inputs	3 inputs	3 inputs
Live Web Streaming	Push or pull Windows Media support	Push or pull Windows Media with VC-1 and Flash streaming support	Push or pull Windows Media with VC-1 and Flash streaming support	Push or pull Windows Media with VC-1 and Flash streaming support
Recorder	MPEG-2 or WMV	Simultaneous MPEG-2 +WMV	Simultaneous MPEG-2 +WMV	Simultaneous MPEG-2 +WMV
Recorder Capacity	10 Hours MPEG-2	10 Hours MPEG-2	20 Hours MPEG-2	20 Hours MPEG-2
Mic Inputs	2 Phone	2 balanced (XLR or Phone)	4 balanced (XLR or Phone)	4 balanced (XLR or Phone)
Line Inputs	1 RCA stereo	2 XLR/phone 1 RCA stereo	4 XLR/Phone	4 XLR/Phone
Line Outputs	1 RCA stereo pair	2 balanced phone	2 balanced phone; 2 RCA	2 balanced phone; 2 RCA
Waveform / Vectorscope	---	Yes	Yes	Yes
Phantom Power	---	Yes	Yes	Yes
Non-linear Editor	Yes	Yes	Yes	Yes
Upstream Effects	---	Yes	Yes	Yes
File Formats	AVI, DV, MPEG-2, QuickTime, HDV, JPG, PNG and more			
Dimensions (D x H x W)	11.5 x 8 x 7.5"	11.5 x 8 x 7.5"	15.5 x 8.5 x 10.4"	15.5 x 8.5 x 10.4"

TriCaster (Mfr # TC000000-0101 • B&H # NETC)**4995.00**
TriCaster PRO (Mfr # TP000000-0101 • B&H # NETCPQ)**CALL**

TriCaster STUDIO (Mfr # TS000000-0101 • B&H # NETCSF)**CALL**
TriCaster BROADCAST**CALL**



LiveControl

For a physical connection to each input during your live presentation, NewTek offers LiveControl with large, back-lit, easy-to-read buttons allowing for easy transition from one source to the next without looking down or using a keyboard or mouse. All camera, picture, video, and network sources can be placed on either the Live or Preview row. Quickly choose your title, picture, or transition using the rotary dials. Use the T-bar to manually transition sources. (B&H # NETCLC11)**CALL**

LiveText

In fast-paced live productions, it often helps to share the workload with another, one person switching sources while another creates titles. LiveText is remote titling and graphics software that runs independently on your laptop or other computer communicating directly with TriCaster during a live production. This allows the director to keep an eye on the shot and the graphics operator to focus on titles. Whether preparing a large number of titles in pre-production on a laptop off-site or making last-minute changes during the show, LiveText makes your production run fast and smooth. (B&H # NETRLT).....**CALL**

TriCaster VM

The TriCaster VM is an option for those who prefer a physical connection to each input during the live presentation. Offering large, back-lit, easy-to-read buttons, this mixing console works with the TriCaster to control camera, picture, video, and network sources. Users can quickly choose the title or picture using the rotary dials, and change transition speeds. The user operates the T-bar to smoothly blend sources at any speed. (Mfr # TC000008-0101 • B&H # NETCVM)**995.00**

TimeWarp



Slow motion and instant replay are at your fingertips with TimeWarp connected to your TriCaster system. TimeWarp allows you to select, mark and playback clips at various slow motion speeds. Expand your team with a TimeWarp operator and you'll enjoy the freedom of instant replay while you continue to record your program. TimeWarp takes your sports and event production to a whole new level. (B&H # NETCTW)**CALL**

AG-MX70

Digital A/V Mixer

The AG-MX70 integrates a 2-BUS, 8-input video switcher, multi-functional digital video effects unit with high-end performance, and an audio mixer into a single compact unit. It provides broadcast-quality 4:2:2:4 digital component picture quality and Dynamic Rounding technology to assure beautiful gradient transitions, super smooth edges and extremely clean video processing. It can create more than 600 2D effects patterns including transitions, key patterns, melts, mosaic, paint, trail and multi-images. The optional AG-VE70P 3-D effects board provides over 1600 effects including page-turns, accordions, spheres and ripples. It also features a 30-frame graphics buffer for roll, crawl, and logo animation using title files downloaded from a PC. A large LCD panel with a matrix menu helps assure quick, easy operation. The versatile AG-MX70 is right at home when connected to the AJ-SD755 in a digital editing system, or when used as a switcher either in the studio or at live events. And with the optional SDI interface installed, its ready for full-fledged digital post-production.



FEATURES

- ◆ Supports broadcast-grade 4:2:2:4 digital component image quality and wipe patterns that accommodate both 16:9 and 4:3 aspect ratio production needs.
- ◆ Easy-to-operate joystick lets you intuitively position and size effects as well as select and adjust colors or perform color correction.
- ◆ The AG-MX70 offers a large LCD control panel for quick, easy operation and monitoring of system status. A five-row matrix menu display with five rotary switches makes it easy to set the unit's multitude of functions. The menu, which is linked to keys on the operating panel, automatically switches to show the necessary settings. This simplifies operation and reduces steps.
- ◆ The LCD also includes a numeric keypad for setting pattern numbers and other values; and 13 preset patterns that can be stored in memory, and displays audio level meters.
- ◆ Equipped with over 600 2D effects — including transition and key patterns, mosaic, paint, trail, and multiimage digital effects — the versatile AG-MX70 has all it takes to create professional production results.
- ◆ The optional AG-VE70 3D Effects Board provides more than 1,600 3D digital effects, including page turn, ripple, and sphere. The 2D and 3D effects can be combined to create sophisticated image expressions that rival many high-end DVEs.
- ◆ Ready for full-fledged digital postproduction, this mixer offers a 30-frame graphics buffer for roll, crawl and logo animation; and a USB interface makes it easy to import titles and graphic files (TGA, BMP, JPEG) created on a PC and superimposed for use in studio or live production programming.
- ◆ Designed for live production with genlockable cameras, the AG-MX70 features tally outputs for each of the 8 inputs. Two-channel frame synchronization, permitting effects in each of the A/B program busses.
- ◆ The 8 inputs can all be used for analog composite feeds, or may be used as 4 analog component or S-Video inputs and 4 SDI inputs with the optional SDI board installed.
- ◆ Offers an array of other inputs including component, composite, S-Video, as well an optional SDI interface (AG-YA70).
- ◆ Equipped with RS-422A and RS-232C remote control terminals, as well as a GPI terminal.
- ◆ Assures versatile audio mixing with four stereo inputs (or embedded audio with the optional SDI interface), plus two auxiliary inputs, one of which can be switched to a microphone level input. Audio can also be linked or unlinked to video transitions.
- ◆ It has a 3-band EQ on the audio inputs and a pitch change function for masking voice recognition, as well as four levels of audio adjustments (from any of the four sources). It also has a headphone jack and level meters.
- ◆ Other key features include:
 - PAL/NTSC switchability
 - Digital chrominance and luminance keys
 - Mix Effects (M/E) preview
 - Down Stream key (DSK) preview
 - Event Memory for storing favorite effects
 - Eight cross points
 - Built-in color bars.

AG-MX70 (Mfr # AG-MX70 • B&H # PAAGMX70).....	CALL
AG-VE70 3D DVE Board for AG-MX70 (Mfr # AG-VE70 • B&H # PAAGVE70).....	2549.95
AG-YA70 SDI Board for AG-MX70 (Mfr # AG-YA70 • B&H # PAAGYA70).....	2549.95
AG-MX70 with AG-YA70 SDI Board (Mfr # AGMX70SD • B&H # PAAGMX70SD).....	7999.95
AG-MX70 with AG-VE70 3D Board (Mfr # AGMX70FX • B&H # PAAGMX70FX3D).....	7999.95
AG-MX70 with AG-YA70 SDI and AG-VE70 Boards (Mfr # AG-MX70SF • B&H # PAAGMX70SF).....	10,499.95

AV-HS300

Multi-Format HD/SD Live Switcher

This compact, multi-format AV-HS300G video switcher provides high definition or standard definition switching for live and to-be-recorded events. This high-performance unit features six inputs (five HD/SD SDI and one DVI/RGB) and three outputs (three HD/SD SDI), RS-422 control, Ethernet connectivity and a built-in, 10-bit, 6-channel



frame synchronizer that adjusts automatically (external Gen Lock synchronization available also). Easy to operate, it also includes nine wipe patterns and three directional wipes.

Ideal for broadcast facilities, production vans, fly packs, sports, church productions, music videos, cable shows, corporate videos, event staging, educational and training facilities, conferences and more.



FEATURES

- ◆ Standard configuration consists of six inputs (5 HD-SDI or SD-SDI, 1 DVI/RGB) and three SDI outputs (PGM, PVW and AUX). Can also support HD analog component input using the optional HD Component Analog Board for five inputs (three BNCs for each input)
- ◆ HD/SD multi-format support: 1080/59.94i, 1080/50i, 720/59.94p, 720/50p, 576i, 480/59.94i. Global HD/SD multi-format video signals can also be switched.
- ◆ High quality switching from multiple fixed cameras and VCRs can be achieved from an event location. Videos with the feeling of being at live performance from multiple fixed cameras in the event or concert hall can be smoothly switched.
- ◆ High-performance 10-Bit 6-channel frame synchronizer enables non-synchronized images to be input. It also allows switching without shock or freeze even with asynchronous video signals. By using the Blackburst signal output, a system can be configured using the switcher's sync signals as a reference. Genlock is also possible with external sync signals.
- ◆ Key combinations include self keys, linear key, and key inversion. Borders can be added to titles and specific border colors (as well as width and sharpness) can be added for more versatile titling.
- ◆ 6 tally outputs
- ◆ RS422A and GPI interfaces
- ◆ Import images from a PC over Ethernet (100 Mbps or 10 Mbps) and use them as background images or key input signals.
- ◆ The simple panel layout that enables functions to be operated directly, also enables speedy live transmissions. Preset-like operations can be performed on the LCD panel using a menu-driven format.
- ◆ Selectable A/B Bus system or Flip Flop system in Bus operation
- ◆ The AV-HS300 is powered by an external DC 12v power supply so it can be used not only indoors but in the field as well. DC 12v (via 4-pin XLR) external power operation assures easy maneuverability when mixing in the field at concerts or other live operations.

AW-SW350 5-Input AC/DC Video Switcher

A compact, half-rack mixer with five composite and S-Video inputs, the AW-SW350 is designed to work with multi-camera systems, such as ENG cameras for news production vans or Panasonic's convertible CCD cameras and pan/tilt systems. Ideal for field production, the live switcher has a built-in, 10-bit, 5-channel frame synchronizer, which is useful for high-quality switching and eliminates the need to genlock when switching between cameras. It is PAL and NTSC switchable, and can also be switched to a genlock system for high-quality video live switching in video production applications.

Additional features include: SMPTE color bars; black/white/six colors of background; three-directional wipes (normal/reverse, normal, reverse); nine wipe patterns; Manual/Auto wipes (hard/soft) or mixes (adjustable wipe or mix transition time); GAIN and CLIP keys; and intercom tally. A USB port is available for mixing/keying video and computer graphics. Ideal for use in the field, the 12v DC-operated system also is available with an optional AC adaptor.

AW-SW350 (Mfr # AW-SW350 • B&H # PAAWSW350).....**3574.95**



AV-HS400

Multi-Format HD/SD Live Switcher with MultiViewer

The AV-HS400 is a compact, multi-format video switcher for live events, cable show production, event staging, corporate videos, distance learning, seminars, conferences, and more. This powerful switcher gives productions more flexibility and more features than ever before available in such a compact and cost-effective unit. An all-in-one system that easily integrates into existing HD/SD workflows, the AV-HS400 flawlessly mixes HD and SD video sources. The built-in MultiViewer can output 4, 6, or 10 images from different sources to a single high-resolution display, eliminating the need for multiple HD source and preview monitors.

For added creative flexibility, the switcher offers a broad selection of wipe patterns including 3-D digital effects and features a high-quality chroma key. The AV-HS400's modular architecture comes standard with four HD/SD-SDI inputs and four HD/SDI outputs and can be expanded to support up to 8 inputs and 8 outputs with optional I/O boards. The switcher has a built-in, switchable 10-bit frame synchronizer for each input, for glitch-free switching, even with non-synchronous sources such as DVD players or remote camera feeds.



FEATURES

- ◆ Compact design with multi-format compatibility for use in studio or mobile production systems worldwide. Works with inputs from most video sources as well as PCs. Ideal when content needs immediate viewing live on multiple platforms or via transmission.
- ◆ 10-bit, 8-channel frame synchronizer eliminates the need to genlock when switching between cameras or asynchronous sources. Produces a single stream of continuous content for any video production application.
- ◆ Includes four video inputs and outputs as standard with an option for up to 8 inputs and outputs. These interfaces are assignable as PGM, PVW, AUX, multi-screen, and keyout.
- ◆ Up to 43 transitions, including 3D digital effects with page turns and rotations, as well as standard wipe, squeeze and slide patterns.
- ◆ Modular interface includes Ethernet, RS-422 remote, Tally output and GPI input.
- ◆ User-friendly functions include SD Card slot for transferring still images and programmable user buttons.
- ◆ Reference (black burst) signal outputs are also provided to enable synchronization with external systems.
- ◆ Multi-viewer function allows users to select and arrange each individual split-screen image. Other advanced features include picture-in-picture (PIP), luminance key, Aux Bus and downstream key (DSK) functions.
- ◆ Rack-mountable and self-contained (great for flight-packs and small control rooms).

AV-HS400 (Mfr # AV-HS400 • B&H # PAAVHS400)**Call**
DVI Input Board (Mfr # AV-HS04M3 • B&H # PAAVHS04M3)**1862.50**

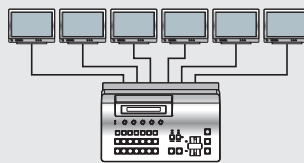
Example of an AV-HS400 monitor system

Simultaneous split-screen preview with a single monitor.



Example of conventional monitor system

Connection of separate monitors is required for each input, PVW and PGM.



* The image shows loop-through outputs connected to switcher inputs.

Number and Location of Images is Selectable

- Display of signal name in each screen (ON/OFF possible).
- Display of red tally indications in frames for PGM output.
- Left/right switching of PGM and PVW screens possible.
- Arrangement of the images can be changed.



Ten Split Pictures (images)



Eight Split Pictures (images)



Four Split Pictures (images)

Analog Component Input Board (Mfr # AV-HS04M2 • B&H # PAAVHS04M2)	1674.95
Analog Component Output Board (Mfr # AV-HS04M4 • B&H # PAAVHS04M4)	1074.95
DVI & Analog Component Output Board (Mfr # AV-HS04M5 • B&H # PAAVHS04M5)	2237.50
SDI Input Board (Mfr # AV-HS04M1 • B&H # PAAVHS04M1)	1824.95

MFS-2000 SERIES

Multi-Format Switchers

Packed in an extremely compact chassis, the MFS-2000 Series of switchers is intended for use in small-scale OB vehicles, production studios and editing suites. Its multi-format capability allows it to operate in any current SD or HD format, making it suitable for productions both today and tomorrow. Three types of control panel are available, each

built to provide a high level of operational performance. The MFS-2000 is supplied with a range of powerful features. In addition, a 2-channel DME function with various preset effect patterns, including nonlinear capability, a powerful frame memory system and an RGB color corrector function are all available as options. What's more, the MFS-2000 Series offers many operational benefits such as an easy-to-operate color touch-screen LCD panel and a FlexiPad control panel with color LCD buttons. The MFS-2000 Series represents an ideal combination of power, size, versatility, and cost-efficiency.



MFS-2000
Multi-Format Switcher Processor

MKS-2010 (1 M/E Control Panel)

FEATURES

Switcher Features

- ◆ 1 M/E configuration provides 1 M/E with 2 keys and 2 DSKs
- ◆ 1.5 M/E configuration provides 1 M/E with 2 keys and P/P transition with 2 DSKs.
- ◆ 6 -CH Frame Memory
- ◆ 2-CH RGB Color Correction
- ◆ Parallel tally outputs & serial tally interface
- ◆ Look-ahead preview
- ◆ Each keyer offers linear key, luminance key, chroma key, and pattern key with edge and mask functions.
- ◆ Key edges can be added without key-drop using a dedicated frame memory.
- ◆ Full featured M/E wipes including advanced wipe patterns, and support for Snapshot and Macros.
- ◆ Provides both M/E and Effect Snapshot memories. With the advanced Macro function, complex key sequences can be learned, edited, and attached for recall to many control-panel buttons. External devices including VTRs can be controlled directly from the MFS-2000 switcher system using the MKS-2700 Device Control Unit.

Multi-format Capability

- ◆ The MFS-2000 Series is a sophisticated switcher system available in both standard definition and multi-format configurations. All standard definition configurations can easily be upgraded to a multi-format system with minimal cost, simply by upgrading the software. This flexibility allows users to choose a switcher that meets their budgetary, operational, and future needs.
- ◆ Multi-format configuration: 1080i/59.94, 50; 1080p/29.97, 25, 24, 23.976; 720p/59.94; 480i/59.94; 576i/50
- ◆ Standard definition configuration: 480i/59.94; 576i/50

Compact Control Panels and Switcher Processor

Three types of control panels are available, each one designed to meet the requirements of space-limited applications. Together with a 3RU switcher processor chassis, this makes the MFS-2000 an ideal choice in any situation where space is at a premium.



MKS-2015 (1.5 M/E Control Panel)

MKS-2017 (1.5 M/E Wide Control Panel)

- ◆ 1 M/E Control Panel, 19-inch rack width with 12-crosspoint buttons
- ◆ 1.5 M/E Control Panel, 19-inch rack width with 12-crosspoint buttons
- ◆ 1.5 M/E Wide Control Panel, 576-mm width with 20-crosspoint buttons
- ◆ Switcher processor I/Os: 8 input/4 output or 16 input/8 output

MFS-2000 SERIES

Effect Patterns

The MFS-2000 Series provide stunning preset effect patterns, without the need for complicated programming, in the form of preset wipes and DME wipe patterns. Plus, it is equipped with various effect modifiers that enable flexible pattern adjustments to be performed and memorized on the control surface. These useful presets allow impressive visuals to be created extremely quickly and easily.

FlexiPad Control Panel

The unique FlexiPad control panel enables operations such as Macro, M/E, and Effect Snapshot to be stored and recalled with the touch of a button. The use of color LCD buttons to indicate assigned functions gives users extremely intuitive operation.

Touch-Screen LCD panel

The color touch-screen LCD panel provides users with effective and straightforward menu control. A variety of operational parameters are displayed, which can be adjusted directly from the panel.

Live Operation

The MFS-2000 Series also provides ideal capabilities for live operation.

- ◆ The switcher processor provides both serial and parallel tally outputs. A single serial port and up to 16 parallel tally ports are provided as standard. In addition, 36 programmable tally ports can be gained by adding the optional MKS-2700 Device Control Unit.
- ◆ Both the control panel and the switcher processor can be fitted with redundant power supply units, giving operators the security required for live productions.
- ◆ Power consumption is less than 500w for a 1.5 M/E-configured processor with the plug-in DME installed.
- ◆ Equipped with various peripheral interfaces, the MFS-2000 Series operates as a powerful live production tool. Through the 8 input / 8 output GPI connector, many internal machine functions, including operating format, can be switched remotely. An additional GPI port is provided on the control panel, and an S-BUS interface is also provided to which an MKS-8080/ 8082 AUX bus remote panel can be connected.

MFS-2000: Multi-Format Switcher Processor (Mfr# MFS2000 • B&H# SOMFS2000)

HK-PSU02: Power Supply Unit for MFS-2000 (Mfr# HKPSU02 • B&H# SOHKPSU02)

MKS-2010: 1 M/E Control Panel with 12 crosspoint buttons. Designed with space constraints in mind and when used in conjunction with the 3RU switcher processor rack chassis offers a practical way to save workspace real estate. Bring more precise control to the management of your MFS-2000 switcher by way of this control panel. (Mfr# MKS2010 • B&H# SOMKS2010)

MKS-2015: 1.5 M/E Control Panel (Mfr# MKS2015 • B&H# SOMKS2015)

MKS-2017: 1.5 M/E Wide Control Panel (Mfr# MKS2017 • B&H# SOMKS2017)

HK-PSU11: Power Supply Unit for Control Panel

MKS-2110M Input/Output Connector Board: Provides 8 SDI input connectors and 4 SDI output connectors to the MFS-2000 Series Switchers. (Mfr# MKS2110M • B&H# SOMKS2110M)

MKS-2420M Color Corrector Board: This card gives real-time hardware-enhanced ability for controlling image hue, B&W level and saturation. During live broadcast, this can often be critical due to the sometimes undesirable conditions that come with ENG acquisition. Gives added versatility to OB producers by providing ability to adjust on the fly with no hassle. (Mfr# MKS2420M • B&H# SOMKS2420M)



MKS-2440 Frame Memory Board Set: Provides powerful 6-channel frame memory with animation capability to the MFS-2000 Series Switchers. The MKS-2440 offers two channel-source busses and six channel outputs with re-position capability. The frame memory stores 435 frames of HD images which translates into approximately 15 seconds at 1080/59.94i, or 2184 frames of SD images which translates into approximately 73 seconds at 480i/59.94. (Mfr# MKS2440 • B&H# SOMKS2440)

MKS-2470 2-Channel DME Board Set: This add-on board upgrades the MFS-2000 switchers to two (2) channels of high-quality DME. The board comes with many standard pre-programmed effects in addition to new effects that are being added on an ongoing basis. Effects built on the MVS8000 and DVS9000 systems can also be imported. This board also supports non-linear, sketch, glow, and metal effects. If used in conjunction with a multi-format switcher, this unit requires BZS2470M software. (Mfr# MKS2470 • B&H# SOMKS2470)



DOOR



Page TURN



Digital SKETCH

MKS-2700 Device Control Unit: Compact (1RU high) Device Control Unit for the MFS-2000 switcher system. Redundant power supply is supported by using the optional HK-PSU01 Power Supply Unit. The MKS-2700 is suitable for small-scale systems with affordable price.

HK-PSU01 Power Supply Unit for MKS-2700 (Mfr# HKPSU01 • B&H# SOHKPSU01)

BZS-2000M Upgrade Software: Upgrades the MFS-2000 switcher system from standard definition support to multi-format support and operation. (Mfr# BZS2000M • B&H# SOBZS2000M)

BZS-2440M Frame Memory Upgrade: Upgrades the MFS-2000's frame memory system to support multi-format operation. (Mfr# BZS2440M • B&H# SOBZS2440M)

BZS-2470M DME Upgrade Software: Upgrades the MFS-2000 DME from standard definition support to multi-format support and operation. (Mfr# BZS2470M • B&H# SOBZS2470M)

ANYCAST STATION (AWS-G500 • AWS-G500HD)

Live Content Producer

The Anycast Station combines Sony AV expertise together with industry-leading IT technology. Designed as a powerful content creation tool for live event programming, it comprises a high-quality video switcher, audio mixer, large LCD display, and a streaming encoder and server – all packed into an attaché case size chassis weighing just over 17 lbs.

To integrate video, audio, and a variety of PC input sources in live events, Anycast Station provides a comprehensive set of AV and IT inputs. These include analog composite, S-Video, DV input, SD-SDI, and balanced analog audio as well as computer RGB input. For HD-based live event and content creation, the AWS-G500HD Anycast Station provides HD interfaces including HD analog component and HD-SDI. The Anycast Station performs the unique processing that allows live switching between these video and computer sources without the use of external line converters. For program delivery, users can feed programs to a TV transmitter for live broadcast, record onto tape, feed the switched program output directly to large venue displays, store input sources and a PGM output to external hard disk drives (with BKA-570 and BKA-580 interface modules only), stream the program on the web on a live or on-demand basis, or even edit the stored A/V files on a PC. With all these unique features, plus a logical design for ease of use, the Anycast Station system is a tool that can be used by anyone, anytime, and anywhere – for church productions, product promotions, event and live staging, music clip creation, conferences, seminars, and distance learning. Just plug in the power cord, turn on the power, and deliver the program.



FEATURES

Easy and Integrated Operation

The Anycast Station makes live event programming as simple as possible. This is because the system requires very little or no technical knowledge of switcher and mixer setup and operations due to its extremely intuitive control surface and large LCD display.

With Anycast Station, switching between the desired input signals is an extremely easy task. This is because all input sources, as well as the preview and program outputs, are shown on one large LCD screen – simply select the next desired signal from the 'NEXT' button row and slide the transition fader or hit the 'Cut' button.

The window frames of the input sources chosen for the program and preview outputs are highlighted in the same color as the program and preview window markers. This gives users complete comfort that the correct inputs have been selected. A variety of preset effect patterns are available for source switching transitions as well as for inserting keys. On all GUI displays, a choice of 10 languages is provided for maximum ease of use.

Camera Remote Control Capability

The Anycast Station system allows operators to easily control up to six compatible Pan/Tilt/Zoom cameras at remote locations, since it allows Pan and Tilt adjustments from its position controller, in addition to Iris, Focus, and Zoom control using the jog and shuttle dials. Sony offers a variety of compatible cameras such as BRC-300, BRC-H700, EVI-HD1.

Text Typing Tool

The Anycast Station comes with "Text Typing Tool" software, which is controlled via an easy-to-use GUI displayed in full size on the LCD screen.

This GUI can be easily toggled between the main GUI. The Text Typing Tool software allows users to easily generate still text for superimposition on the program output using the DSK or Keyer. In addition, Wipe and Dissolve effects can be used for the overlaying of text. A number of text files can be created and stored in advance for instant recall during the live event, and it is possible to install TrueType fonts from third parties. The Text Typing Tool supports ten languages: English, Chinese (Simplified), Chinese (Traditional), French, German, Italian, Japanese, Korean, Portuguese and Spanish.

Record to Hard Disk (with BKAW-570/BKAW-580 only)

During a live event, Anycast allows synchronized recording of two primary SD video input sources to an external IEEE1394 Firewire hard disk drive. This means that with only two hard disks, four primary inputs can be recorded. What's more, the PGM output can be recorded as DV files.

After recording, the DV files can be played back on a PC by connecting the hard disk drives to it, as well as on the Anycast Station system. In addition, Anycast has the capability to automatically create an EDL (Edit Decision List) based on its switching information, which allows users to edit DV files on a PC very efficiently.

ANYCAST STATION (AWS-G500 • AWS-G500HD)

1: Video Switcher

- 1280 x 1024 100-MHz/4:2:2 8-bit processing
- 6 primary inputs plus one still picture source
- 1 ME with 1 keyer including Chroma Keying
- 1 DSK + 1 fixed station logo
- Picture-in-Picture
- 16 wipe patterns

2: Audio Mixer

- 48 kHz/24-bit processing
- 6 stereo channel input mixing
- 6 channel faders and 1 master fader
- Audio-follow-video

3: Access Buttons

Pressing an access button calls up the control menus of the associated input to the LCD screen. A variety of video and audio parameter settings can be made.

4: Mixer Output Controls

Provides controls for the audio monitor output level, built-in speakers, and headphone output, talkback On/Off, and dimmer On/Off of an intercom. The audio signal to be monitored between PGM, AUX1, AUX2, and MIX.

5: On-line Button

- Triggers or stops the following functions:
- Streaming distribution
 - Recording of input sources or PGM output to compatible hard disk drives
 - Recording of PGM output to i.LINK-compatible VTRs
*not available in HD mode
- Creating of video-on-demand files of the streaming content

6: Menu Operation/Camera Control

General menu selection/settings are made using the menu button and jog roller. This area also provides control functions for compatible Sony Pan/Tilt/Zoom cameras. The position controller allows Pan/Tilt control of compatible Sony Pan/Tilt/Zoom cameras while the ten keys are for camera position memory store/recall. VISCA™ control is used to provide Pan, Tilt, Zoom, Iris, Focus, and White Balance control functions.

A: Source Viewer

Displays the thumbnail video of each input source. The windows of the sources selected for PGM out and PVW out are highlighted in red and amber, respectively.

B: Streaming Display

Displays the parameters, current server status of the streaming video, and URL of the Anycast Station system user is operating.

C: PGW Viewer

Displays the source currently distributed or presented.

D: PVW Viewer

Displays the next source selected for output after the transition.

E: Effect Display

The currently selected effect pattern is indicated with an effect icon. Effect and DSK transition durations are also displayed.

F: Guide Display

Displays guides for controlling compatible Sony Pan/Tilt/Zoom cameras such as zoom, pan, tilt, focus, and iris. The camera position memory numbers/names of the camera selected on the 'NEXT' button row are also displayed. Also displays general menu selections and settings.

G: Audio Level Display and Key On Indicator

Displays either the audio output levels of PGM, MIX, AUX1, and AUX2, or the status of the key; On/Off.

H: Built-in Stereo Speakers



7: Device Control

Provides basic and jog/shuttle control functions of external hard disk drives and i.LINK-compatible VTRs used for playing back video material. The jog and shuttle dials are also used for focus and zoom control of compatible Sony Pan/Tilt/Zoom cameras.

8: Talkback Microphone

Used for talkback purposes. An intercom connector is also provided on the rear panel should the use of an intercom system be preferred.

9: Wireless Keyboard (Turned Over)

Used to create still text for superimposition on the program output, type video source names prior to the live event, as well as setting up IP addresses for streaming destinations.

ANYCAST STATION (AWS-G500 • AWS-G500HD)

Seamless Switching

The Anycast Station allows live switching between a variety of signal sources – from SD (analog composite, S-Video, DV, and optional SD-SDI), HD video (HD analog component, HD-SDI) to PC images with various resolutions. This achieved via sophisticated built-in line converters and the high-resolution internal processing. Each input source is up-converted and processed within a 1280 x 1024 progressive domain to allow switching between sources of different resolutions, while keeping picture degradation to a minimum. The program can be output from a variety of interfaces including composite, S-Video, SD-SDI (with the BKAW-580) for video, HD analog component (with the BKAW-560), HD-SDI (with the BKAW-590), and D-Sub 15-pin outputs for projectors and plasma displays.

- ◆ Provides both mix and wipe transition effects, Picture-in-Picture for combining videos, or RGB input images.
- ◆ Before carrying out a switching operation, you can preview the next selected image in the PVW viewer.
- ◆ Mix video using a maximum of five effects at one time, such as incorporating (keying) a separate video clip when switching between two video clips with a wipe or other transition effect, as well as superimposing text (downstream key) and displaying a copyright logo.
- ◆ You can mix up to six audio inputs. Each channel is provided with a range of functions, including fader, input trim, filter equalizer, limiter and compressor pan (balance), allowing the sound quality and level to be adjusted on each channel separately.
- ◆ In addition, each channel has a prefader listen function, allowing you to monitor the input audio before any effects are applied by the fader, and each output has a delay function to correct any discrepancies between the audio and video timing.

Live and On-Demand Video Streaming

Anycast Station provides a built-in Streaming Encoder and Streaming Server for live and on-demand video streaming. This allows the high-quality program output of the Anycast Station system to be streamed in real-time – with minimum degradation and through very simple procedures – for distribution over the Internet, LANs, or leased lines. When the number of clients is relatively small, the built-in Streaming Server function allows the streamed video to be distributed right from the Anycast Station system without the need for an external streaming server connection. Since the built-in Streaming Encoder also allows connection to external streaming servers, the live event can be widely distributed to hundreds or even thousands of viewers. The Anycast Station system can also store internally encoded video files on its own hard disk drive and stream them as video-on-demand. This allows a relatively small number of clients to connect directly to the Anycast Station and view video files when they wish. In addition, the encoded video files can also be exported via Memory Stick® Media or USB flash drive to an external server for full-fledged on-demand video streaming to a larger number of clients.

Remote Camera Control

Using a camera with VISCA support, you can remotely control the camera movements, including panning tilting and zoom. Camera preset function allows you to store camera pan, tilt and zoom settings.

All-in-one Design

The Anycast Station system comes equipped with a video switcher, an audio mixer, an LCD display, and camera control functions, all packed into a compact attaché case design. This approach eliminates any external wiring and cumbersome signal adjustments, making setup extremely easy and quick. On the large LCD screen, there are two windows for monitoring the program and preview outputs, together with seven windows to view each individual input source plus one internal still picture source, eliminating the need for many picture monitors. These factors make the Anycast Station system a powerful device for producing live events, virtually anywhere and with a minimum production crew. Despite its compact design, each function of the Anycast Station system provides uncompromising power and quality.



Anycast Station Components and Accessories — Call for Prices

AWS-G500: Standard configuration includes two BKAW-570 SD Video Interface and one BKAW-550 PC RGB Video Interface module. (Mfr # AWSG500 • B&H # SOAWSG500)

AWS-G500HD: The AWS-G500HD is a simplified configuration for those who need HD capability ONLY. Configured with (1) BKAW-560 HD Analog Component and (1) BKAW-590 HD-SDI Interface Module. The third interface slot is left empty to allow for flexible configuration with any of the available modules, such as the BKAW-550, BKAW-570, and BKAW-580 based on user needs. (Mfr # AWSG500HD • B&H # SOAWSG500HD)

BKAW-550 PC RGB Interface Module (Mfr # BKAW550 • B&H # SOBKA550)

BKAW-560 HD Video Analog Component Module (Mfr # BKAW560 • B&H # SOBKA560)

BKAW-570 SD Video (composite, S-Video, IEEE1394) Module (Mfr # BKAW570 • B&H # SOBKA570)

BKAW-580 SD-SDI Interface Module (Mfr # BKAW580 • B&H # SOBKA580)

BKAW-590 HD-SDI Interface Module (Mfr # BKAW590 • B&H # SOBKA590)

Soft Carry Case for Anycast Station (Mfr # LCAWSBP • B&H # SOLCAWSBP) **189.95**

Calzone Escort ATA Transit Case for AWS-G500 (Mfr # ES25SAG50 • B&H # CAES25SAG50)..... **359.95**

PFV-SP3100 • PFV-SP3300

Multi-Format Signal Processing Frames

The PFV-SP3100 (1RU high and 4 slots) and PFV-SP3300 (3RU high and 17 slots) are signal processing frames that accommodate multiple HKSP/HKPF-SP Series function boards with a redundant power supply. When used in conjunction with a HKSP-300 processing module, the PFV-SP Series processing boards can be managed via a LAN 100Base-T Ethernet network.

The frames can be placed in a standard 19" wide rack. The PFV-SP3100 accepts 4 boards, the PFV-SP3300 can accept up to 17 boards. They also allow for an optional hot-swappable backup power supply and CPU option.

Their internal air-forced cooling and robust power supply allow them to support any combination of modules. The frames' flexible configuration options and range of modules for multi-format and multi-bit-rate compliant applications also make them well suited as a migration path from SD to HD, among many other possibilities.



PFV-SP3100



PFV-SP3300

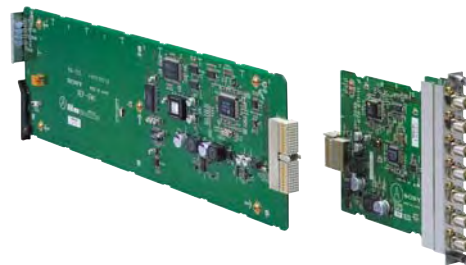
FEATURES

- ◆ HD tri-level sync and black burst signal can be used
- ◆ For networking applications, they enable the setting, controlling and up/downloading of the setup data of the HKSP function boards in a PFV-SP frame when used in combination with a UPC-8060 Universal Control Panel connected via a Ethernet 100Base-TB based network (with the HKSP-300 installed).
- ◆ Reference input to supply reference signal to installed function boards
- ◆ High reliability and ease of maintenance. This includes optional hot-swappable back-up power supply; front panel status indication of power supply units, frame and module boards; and rear panel status out connector.
- ◆ Optional HK-PSU01 and HK-PSU03 Power Supply units provide an extra measure of protection with the PFV-SP3100 or PFV-SP3300 If the standard power supply goes down. They can supply a redundant supply of power to ensure that your equipment continues to work without interruption.
- ◆ Applications include OB vans, studio control rooms, flight pacs, post production, stadium/show display, professional broadcast infrastructure

HKPF-SP003

Digital Video Distribution Amp

The HKPF-SP003 accepts HD or SD inputs and will distribute either signal to up to six SD-SDI and HD-SDI outputs. The input signal is re-clocked before distribution. Features auto-bit rate detection and auto cable equalization of up to 330-ft. (Mfr # HKPFSP003 • B&H # SOHKPFSP003)



HKPF-SP021

Optical to Electrical Converter

The HKPF-SP021 is an optical to electrical signal converter with an operational frequency range of 143 Mb/s to 1.5 Gb/s. In combination with the HKPF-SP022 electrical to optical converter board, it extends the transmission distance over an optical fiber to 3 miles. The HKPF-SP021 has one optical input and provides three electrical digital outputs. The bit rate of the input signal is detected automatically.

HKPF-SP022

Electrical to Optical Converter

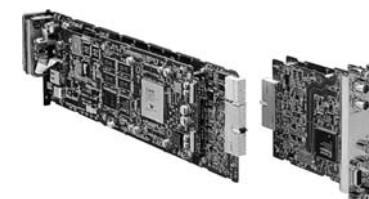
The HKPF-SP022 converts a variety of serial digital electrical signals to optical signals and re-clocks them at a bit rate from 143 Mb/s to 1.5 Gb/s. In combination with the HKPF-SP021 Optical To Electrical Converter board, it provides a transmission distance over an optical fiber of up to 3 miles. The bit rate of the input video signal can be detected automatically. One digital video signal input, one re-clocked electrical digital video signal output and one converted optical signal output connectors are provided.

PFV-SP3100 • PFV-SP3300

HKSP-008HD

HD Frame/Line Synchronizer

The HKSP-008HD synchronizes the input HDTV video signal to an external reference. One equalized input, three distribution outputs and one black burst or tri-level sync reference input with passive loop-through output are provided. Three modes are selectable—Frame Synchronization mode; Line Synchronization mode; Delay Line mode. When an error in the input signal is detected, a variety of freeze functions are available.



Mfr # HKSP008HD • B&H # SOHKSP008HD

- ◆ Supports a wide range of video standards — 1080/60i, 59.94i, 50i; 1035/60i, 59.94i; 1080/30P, 29.97P, 25P, 24P, 23.976P
- ◆ Freeze function when an error is detected in the input signal — Auto/Manual Freeze selectable; Field/Frame Freeze selectable
- ◆ Passes eight channels of embedded audio and other ancillary data on VBI — Automatically mutes embedded audio when picture frozen; 20-bit audio sample rate conversion in Frame Synchronization mode; Variable audio delay in Frame Synchronization mode
- ◆ H/V phase adjustment available in Frame Synchronization mode
- ◆ By-pass mode selectable
- ◆ Built-in test signal generator
- ◆ Local and remote status monitoring and set up
- ◆ Remotely controllable from an optional UCP-8060 Universal Control Panel (Ethernet 100BASE-TX)

HKSP-061M

8 x 4 Digital Video Selector

The HKSP-061M digital video selector board features 8 inputs x 4 outputs and can route serial digital signals at up to 1.5 Gb/s without any setting changes. A variety of matrix configurations are available:

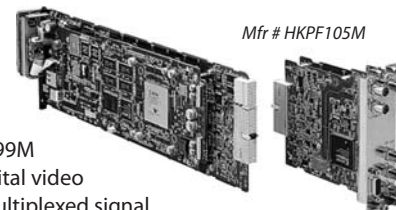
- One 8 x 4 matrix or one 8 x 2 matrix and two distribution outputs
- Two 4 x 2 matrixes or two 4 x 1 matrixes and two distribution outputs, four 2 x 1 matrixes
- Expandable to 16 x 8 by cascade connecting two units
- ◆ Powerful matrix control function via Sony S-BUS remote interface; S-BUS connections with BKS-R Series control panels to form a simple primary station for signal switching
- ◆ Multi bit-rate transmission; Auto bit-rate detection, SD-SDI and HD-SDI signals
- ◆ Synchronized switching with external reference signal; Provides both black burst and tri-level sync signal
- ◆ Retains crosspoint data to restore setting after power-off
- ◆ Remote status monitoring, plus local monitoring with front panel LED

(Mfr # HKSP061M • B&H # SOHKSP061M)

HKPF-105M

HD Audio/Video Multiplexer Board

The HKPF-105M is a video/audio multiplexer board that multiplexes four AES/EBU format digital audio signals (8 channels) with a SMPTE 291M/292M/299M format component serial digital video signal. Two outputs of the multiplexed signal are provided. By cascading two HKPF-105M boards, a further four AES/EBU signals can be multiplexed onto one HD signal, making a total of eight pairs/sixteen channels. Automatic equalization is provided for input cable lengths of up to 100 m (5C-FB or PD-3709 Cooper RG-6/U cable or equivalents).



Mfr # HKPF105M

- ◆ Audio delay function - one video frame
- ◆ Format indication on the front panel

HKPF-106M

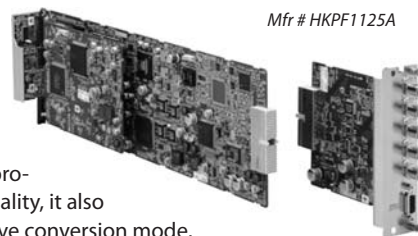
HD Audio/Video Demultiplexer Board

The HKPF-106M demultiplexes four AES/EBU-format digital audio signals from a multiplexed SMPTE 291M/292M/299M component serial digital video signal. The input video signal is distributed to two outputs. Up to eight pairs/sixteen channels of audio can be separated from a multiplexed HD component serial digital video signal by connecting two HKPF-106M boards in cascade. (Mfr # HKPF106M)

HKPF-1125A

HD Up-Converter Board

The HKPF-1125A is a 525-line or a 625-line to 1125-line up-converter with an auto colorimetry selection capability and selectable output modes. To produce optimum image quality, it also features a motion adaptive conversion mode, anti image enhancer, colorimetry and gamma correction functions. The HKPF-1125A accepts inputs in conventional NTSC composite analog or NTSC composite serial digital or 525/625 component serial digital signal format, and provides three HD serial digital outputs to the 1125-line interlaced HDTV standard. The 1125 output can be in the 1035 or 1080 active line format.



Mfr # HKPF1125A

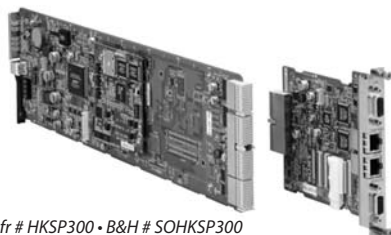
- ◆ Three distribution output of HD SDI with embedded audio
- ◆ Auto colorimetry selection between 1035 and 1080 active lines
- ◆ Aspect ratio modes selectable from Squeeze, Letter Box and Edge Crop
- ◆ Motion adaptive and non-adaptive conversion modes selectable from Frame/Field adaptive, Field fixed and Frame fixed

PFV-SP3100 • PFV-SP3300

HKSP-300

Processing Module Controller

With an HKSP-300 processing module controller installed, the function boards accommodated within the same PFV-SP Series processing units can be controlled from a UCP-8060 universal control



Mfr # HKSP300 • B&H # SOHKSP300

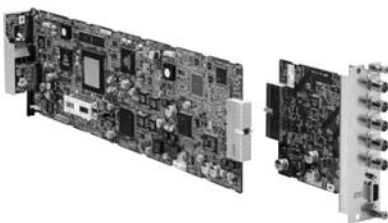
panel over an Ethernet-based network. A redundant CPU is available by installing two HKSP-300 boards. Set-up data backup function retains the settings of the function boards when they have been exchanged. Set-up for networking can be carried out through a connected PC.

- ◆ Enables the setting, control, and up/downloading of the set-up data of other HKSP function boards in a PFV-SP Series signal processing unit when used in combination with a UCP-8060 universal control panel connected via a Ethernet 100BASE-TX based network.
- ◆ Eight inputs and four outputs of GPI interface

HKSP-313

Color Corrector Board

The HKSP-313 color corrector board provides control of various color control parameters for different types of signal and complies with multiple HD formats. It also provides line conversion between 1035 and 1080, and format conversion between 1080 and 720P.



Mfr # HKSP313 • B&H # SOHKSP313

- ◆ HD signal color correction control; Master / Y, Pb, Pr / R, G, B / Video Gain, Chroma Gain, Hue, Set up / Gamma / White/Black Clip,
- ◆ Support for SMPTE292M formats: 1035/60i, 59.94i, 1080/60i, 59.94i, 50i, 1080/30PsF, 29.976PsF, 25PsF, 24PsF, 23.976PsF, 720/60P, 59.94P
- ◆ Enhancer control
- ◆ Active line conversions between 1035 and 1080
- ◆ Format conversion between 1080 and 720P
- ◆ Audio delay function; Maximum two audio frames
- ◆ HD-SDI active loop-through output
- ◆ Retains ancillary data and embedded audio data
- ◆ Transfers UMID and VITC data
- ◆ Built-in Signal Generator
- ◆ Up to eight HKSP-313 boards can be installed in a PFV-SP3300 signal processing unit

HKSP-525

Downconverter Board (Mfr # HKSP525)

The HKSP-525 down converter board converts an HD SDI signal to an SD SDI signal. It accepts an HD SDI input with embedded audio, and provides three SD SDI outputs (525/625) with embedded audio, plus an analog monitor output.

- Down converts an HD SDI signal to an SD SDI (D1) signal; From 1035(1125) / 59.94i, 29.97PsF to 480(525) / 59.94i, 29.97PsF, From 1080(1125) / 59.94i, 29.97PsF to 480(525), / 59.94i, 29.97PsF, From 1080(1125) / 50i, 25PsF to 576(625) / 50i, 25PsF
- Provides an analog composite monitor output
- Handles eight embedded audio channels
- ◆ Retains ancillary data (VITC) and UMID that are on an HD SDI input to an SD SDI output
- ◆ Output signal aspect ratio modes selectable from Squeeze, Edge Crop, Letter Box (16:9) and Semi Letter Box (13:9, 14:9, 15:9)
- ◆ Minimum delay/frame delay selectable
- ◆ Remotely controllable from UCP-8060 universal control panel (Ethernet 100BASE-TX)
- ◆ Auto colorimetry selection between 1035 and 1080 active lines

HKSP-R80

Routing Switcher Controller

The HKSP-R80 routing switcher controller is a stand-alone primary station CPU board for Sony routing switchers. With the HKSP-R80 installed in a PFV-SP Series signal processing unit, a range of features is provided in addition to the primary functions of S-BUS SUB-NET control and conversion between S-BUS and Ethernet LAN. For CPU redundancy, the HKSP-R81 is available. (Mfr # HKSPR80 • B&H # SOHKSPR80)

UCP-8060 Universal Control

The UCP-8060 universal control panel can be used for a wide range of applications where control of PFV-SP Series is required. Its compact size and low-profile design makes the UCP-8060 compatible in almost any system environment.



Mfr # UCP8060

A color touch screen helps to provide quick and positive operation.

- ◆ Remotely controls the functions and monitors the status of the HKSP-008HD, HKSP-105, HKSP-106, HKSP-313 HD, HKSP-525 down-converter board and HKSP-1125 HD. Sony Memory Stick used to store and load set-up data or install software
- ◆ Compact 3RU height and 2/3 19" rack width size — fits neatly into a control desk; 19" rack mountable
- ◆ Combines touch-screen operation with knob and button operation — Easy-to-use menu system with simplified layers